



Flat 76, Hatton Place Midland Road, Luton, LU2 0FD  
£1,400 PCM

- TWO BEDROOMS
- TOWN CENTRE
- BALCONY AND GREAT VIEWS
- MUST BE VIEWED

- LUXURY MODERN FINISH
- 1 MINUTE WALK TO STATION
- HUGE OPEN PLAN LIVING SPACE

- UNDERGROUND CAR PARKING
- EN SUITE TO MASTER
- LIFT SERVICE TO ALL FLOORS

Exclusive to P&R Property

If you're looking for a stylish, modern home right in the heart of Luton, this stunning two bedroom apartment at Hatton Place ticks every box. Finished to a luxury standard throughout, the apartment offers a refined, contemporary feel from the moment you step inside. The master bedroom benefits from its own en suite, adding that extra touch of comfort and privacy. With lift access to all floors, secure allocated underground parking, and Luton train station virtually on your doorstep — with fast services into London St Pancras from just 25 minutes — this is city-centre living at its very best. Available August 2026. Viewing is a must.

### ENTRANCE HALL / HALLWAY

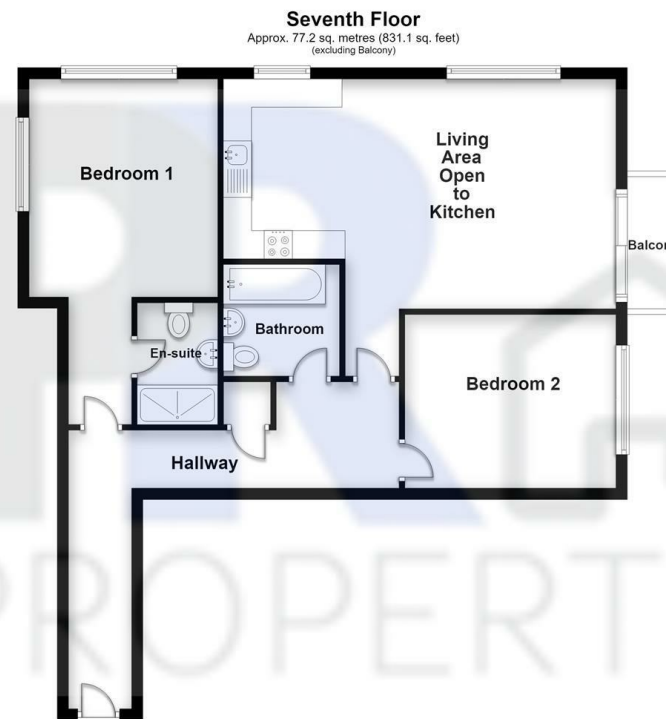
**LIVING ROOM / KITCHEN 22'10 X 13'04 (6.96M X 4.06M)**

**BEDROOM ONE 20'10 X 11'00 (6.35M X 3.35M)**

**BEDROOM TWO 10'01 X 10'03 (3.07M X 3.12M)**

**BATHROOM**

**EN SUITE**



Total area: approx. 77.2 sq. metres (831.1 sq. feet)  
76 Hatton Place, Luton

Energy Efficiency Rating		Current	Potential
Very energy efficient - lower running costs			
(92 plus) A			
(81-91) B			
(69-80) C		78	85
(55-68) D			
(39-54) E			
(21-38) F			
(1-20) G			
Not energy efficient - higher running costs			
England & Wales		EU Directive 2002/91/EC	