



7 Lodgewood Cottages, Hever Road, Hever, Kent TN8 7NP
Guide: £650,000 Freehold

JAMES MILLARD
INDEPENDENT ESTATE AGENTS



- *Character Mid-Terrace Country Cottage *Idyllic Semi-Rural Location
- *Close to the Sought After Village of Hever *Three Bedrooms
- *Open Plan Sitting/Dining Room *Attractive Country Kitchen
- *Ground Floor Bathroom *First Floor Shower Room
- *Gravelled Driveway & Off Road Parking
- *Delightful Well Stocked Cottage Gardens to Front & Rear
- *No Onward Chain

Description

An opportunity to acquire this attractive mid terrace tile hung three bedroom character cottage situated in an idyllic position on the semi-rural outskirts of this sought after village. This delightful village home is presented in lovely order throughout, having generous cottage gardens with access to a private driveway providing ample off road parking and is being sold with the benefit of no onward chain.

Accommodation

- This delightful cottage is approached through a wooden picket gate with pathway leading to the open porch canopy and timber front door which opens to the welcoming reception hallway. Stripped wooden staircase rising to the first floor with understairs storage, inset lighting and quarry tiled flooring.
- Bright dual aspect sitting/dining room having French doors with matching side panels opening to the rear garden and attractive square bay window to front overlooking the garden. Sitting area with central focal fireplace and wood burning stove, further open decorative fireplace to the dining area with cupboards fitted to recess, smart engineered oak flooring throughout, separated by an archway.
- Country style kitchen fitted with a comprehensive range of in-frame painted wall mounted cabinets and base units of cupboards and drawers with solid oak work surfaces and upstands. Stoves halogen electric range cooker, integrated dishwasher, integrated washing machine, Belfast sink with mixer tap, cupboard housing Warmflow oil fired boiler travertine flooring, inset lighting and stable door to garden.
- Stylish ground floor bathroom fitted with a white suite comprising panelled bath, telephone style handheld shower attachment and riser with tiled splashback and glazed screen, pedestal basin and close coupled toilet.
- First floor landing having fitted storage cupboard, inset lighting and stripped wooden flooring.
- Main bedroom with rural aspect to front and fitted shutters, feature open decorative fireplace, fitted wardrobes and stripped wooden flooring. Second bedroom with aspect to rear over the garden, fitted shutters, dado rail and access to insulated and boarded loft space via hatch. Third bedroom with aspect to rear and fitted shutters, dado rail, pretty cast iron fireplace, fitted cupboard housing tank and stripped wooden flooring.
- Completing the first floor accommodation is the modern shower room comprising corner tiled shower cubicle with thermostatic Aqualisa shower and glazed screen, vanity basin and close coupled toilet. Inset lighting, extractor and painted wooden flooring.
- Complementing the interior are the well tended cottage gardens, including a generous front garden with lawn and shrub/flower borders, including spring planting, exterior tap, light and fenced boundaries.

- Sunny rear terrace and gardens, ideal for al fresco dining and summer entertaining. The gardens extend to the side being mainly laid to lawn with well stocked shrub/flower borders including rhododendron, climbing plants, fruit and flowering cherry trees. Timber summerhouse, metal storage shed and log store, screened oil tank. Hardstanding with wooden gates leading to a large private gravel driveway offering parking for several vehicles.
- Services & Points of Note: Mains water and electricity. Oil central heating. Private drainage, septic tank shared with neighbouring cottages.
- Council Tax: E – Sevenoaks District Council.
- EPC: D

Situation

7 Lodgewood Cottages is situated in a delightful semi-rural location on the outskirts of the historic and picturesque village of Hever, renowned for the Castle where Anne Boleyn and Catherine of Aragon resided with its magnificent gardens and lake. The village enjoys local amenities including King Henry VIII public house, church, primary school, golf course and railway station walkable from the property offering services to London Bridge. The nearby town of Edenbridge offers shops and supermarkets including Waitrose, two mainline stations offering services to London Bridge/Victoria within 45 minutes and a large leisure centre. Sevenoaks, Hildenborough, Oxted, Tunbridge Wells and Tonbridge are all accessible and offer comprehensive shopping, educational, and recreational facilities with stations offering fast connections to London Cannon Street/Charing Cross. The area is well served by schools in the private and state sector with Primary schools nearby including Hever, Chiddingstone, Edenbridge and Four Elms as well as secondary and Grammar schools in Tonbridge, Tunbridge Wells and Sevenoaks and Preparatory schools including Holmewood House, Lingfield School and Hazlewood with Public Schools in Sevenoaks and Tonbridge. The surrounding countryside provides wonderful opportunities for riding, walking and cycling with both Penshurst Place and Chiddingstone Castle within easy reach, sailing at Bough Beech reservoir and racing at Lingfield. The M25 motorway can be accessed nearby at junctions 5 and 6, connecting to Gatwick and Heathrow Airports, the Channel Tunnel and Dover.



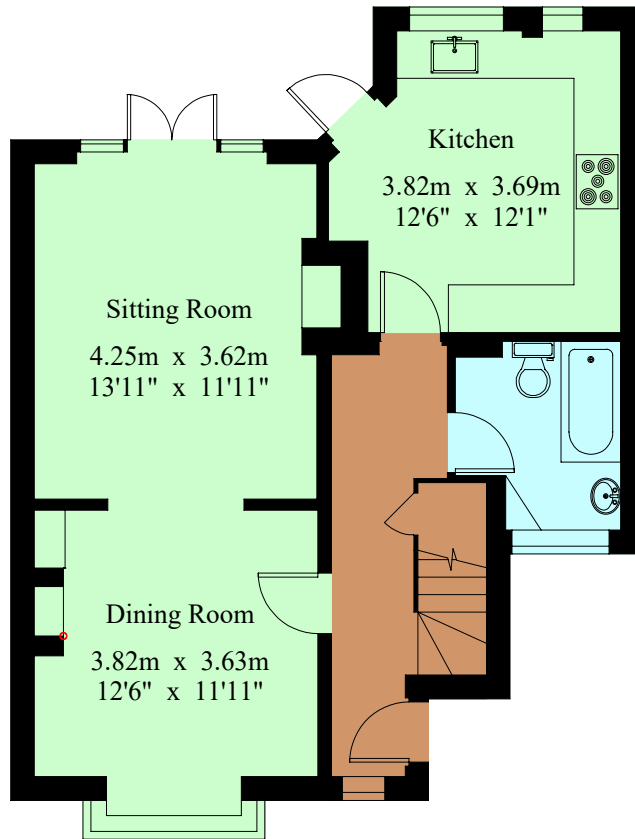
Viewing Strictly By Appointment

01732 834835

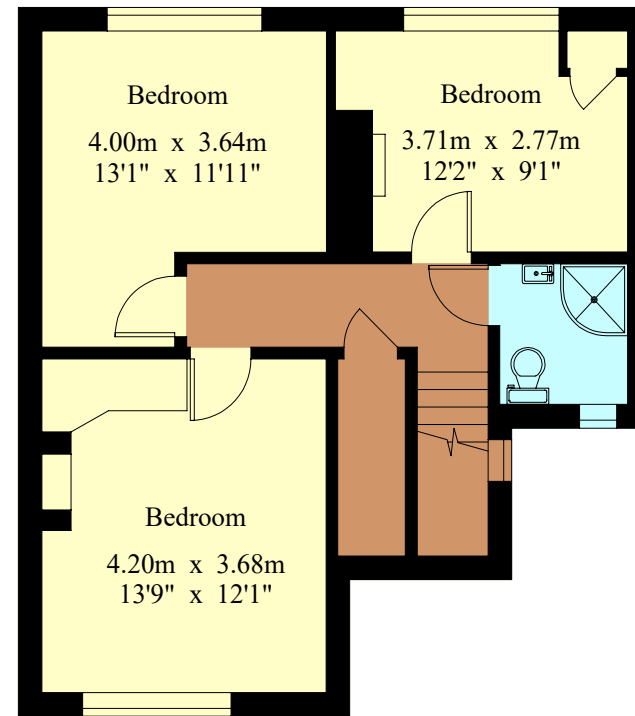
www.jamesmillard.co.uk
hildenborough@jamesmillard.co.uk

7 Lodgewood Cottage

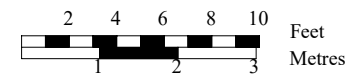
Gross Internal Area : 109.7 sq.m (1181 sq.ft.)



Ground Floor



First Floor



For Identification Purposes Only.

© 2026 Trueplan (UK) Limited (01892) 614 881

James Millard Independent Estate Agents, their clients and any joint agents give notice that: 1.They have no authority to make or give any representations or warranties in relation to the property. These particulars are given in good faith and are to be treated as a general guide only and do not constitute any part of an offer or a contract and must not be relied upon as statements or representations of fact. All statements contained in these particulars are made without any responsibility on the part of James Millard Independent Estate Agents or the vendor or lessor of this property. Any intending purchasers must satisfy themselves by inspection or otherwise as to the correctness of each of the statements contained in these particulars. If any points are particularly relevant to your interest in the property please ask for further information. 2. Any areas, measurements or distances are approximate. The text, photographs and plans are for guidance only and are not necessarily comprehensive. It should not be assumed that the property has all necessary planning, building regulation or other consents. 3. It should not be assumed that any contents, furnishings, furniture etc photographed are included in the sale, nor that the property remains as displayed in the photographs. No assumptions should be made with regard to parts of the property that have not been photographed. 4. Prospective purchasers are advised to satisfy themselves as to the working order of any apparatus, equipment, fixtures and fittings or services where applicable. Whilst they may be mentioned in the particulars, they have not been tested by the Agents. J205

