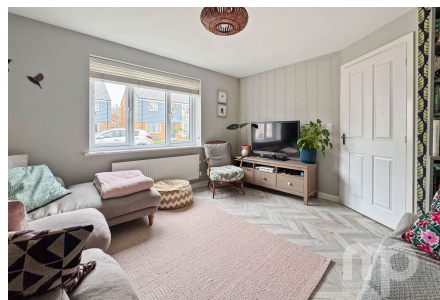
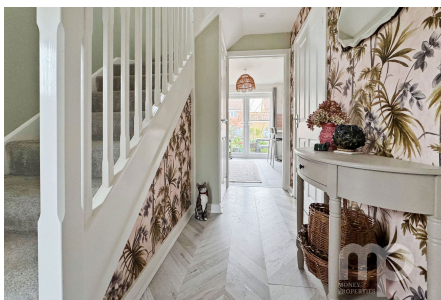


Reeve Way, Wymondham, NR18

£365,000

 4  4  1

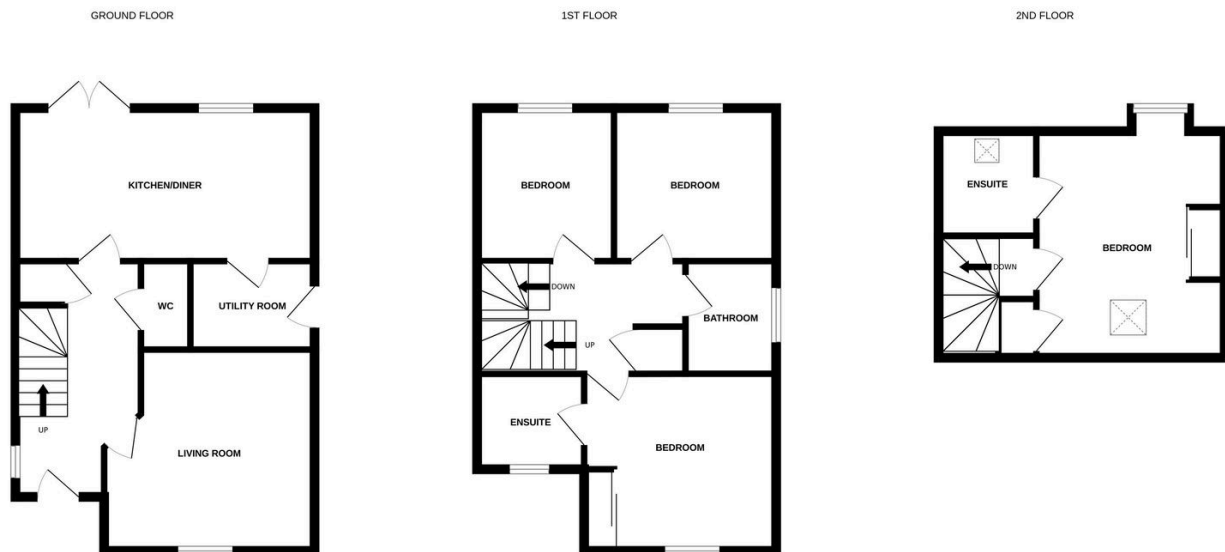


with modern interior throughout, the property comprises of an entrance hall, spacious living room, open plan kitchen/diner, separate utility room and downstairs wc. The first floor provides three double bedrooms with an ensuite to one of the bedrooms along with a family bathroom. The fourth double bedroom comes to the second floor with built in wardrobes and a further ensuite. To the outside comes a generous south-facing rear garden with a patio area, single garage with power and electric and off-road parking.

Tenure: Freehold EPC: B Council Tax: D

Key Features

- Stylish and modern four-bedroom detached family home
- Spacious living room with open-plan kitchen/diner
- Four double bedrooms two with ensembles and built in wardrobes
- South facing rear garden with patio area
- Within ease of access to the A11 and local amenities
- Set across three floors
- Separate utility room with downstairs wc
- Located on a popular residential development
- Single garage with off-road parking
- See our full online listing for further details including flood risk, broadband speed and other material information



Whilst every attempt has been made to ensure the accuracy of the floorplan contained here, measurements of doors, windows, rooms and any other items are approximate and no responsibility is taken for any error, omission or mis-statement. This plan is for illustrative purposes only and should be used as such by any prospective purchaser. The services, systems and appliances shown have not been tested and no guarantee as to their operability or efficiency can be given.
Made with Metropix ©2026