

# Kings Mill Way

• Buckinghamshire • UB9 4BS  
PCM: £2,495 PCM



coopers  
est 1986



A wonderfully presented and spacious three-bedroom, three bathroom split level penthouse to rent located in the popular Kings Island development seconds from Uxbridge Town Centre.

With a multitude of Bars, restaurants and shopping facilities on your doorstep. Located adjacent to the Grand Union Canal provides separation from the busy town centre. A peaceful setting for those with a hectic lifestyle. You also benefit from great transport links and easy access to Central London, Heathrow Airport, Stockley Business Park as well as the M4/A40.

Finished to a high standard throughout, features include three double bedrooms, three bathrooms, spacious lounge, modern fitted kitchen, study room, private terrace and allocated parking.

Part Furnished and available now.

## Split Level Penthouse

Three Bedrooms

Three Bathrooms

Spacious Lounge

Fitted Kitchen

Private Terrace

Great Storage Throughout

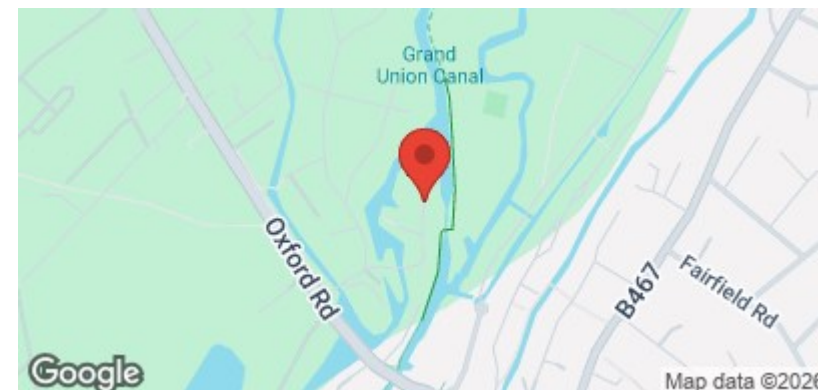
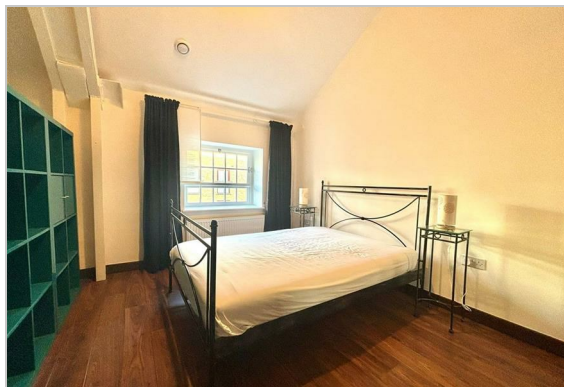
Seconds from Uxbridge Station

Local Amenities within Walking Distance

Allocated Parking

## Available Date

7th February 2026



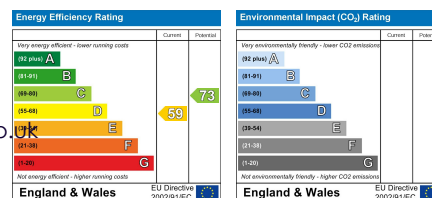
**coopers**  
est 1986

01895 230 103

109 Hillingdon Hill, Hillingdon Village,  
Middlesex, UB10 0JQ

propertymanagement@coopersresidential.co.uk

CoopersResidential.co.uk



Important Notice: These particulars, whilst believed to be accurate are set out as a general outline only for guidance and do not constitute any part of an offer or contract. Intending purchasers should not rely on them as statements or representation of fact, but must satisfy themselves by inspection or otherwise has the authority to make or give any representation or warranty in respect of the property.