



ST. JAMES'S DRIVE, SW17

£695,000

- No onward chain
- Split level
- Three double bedrooms
- Close to Wandsworth Common
- Two bathrooms
- Energy rating: D

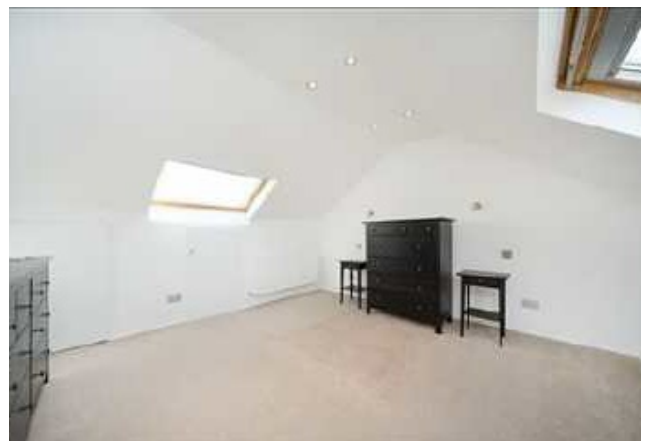




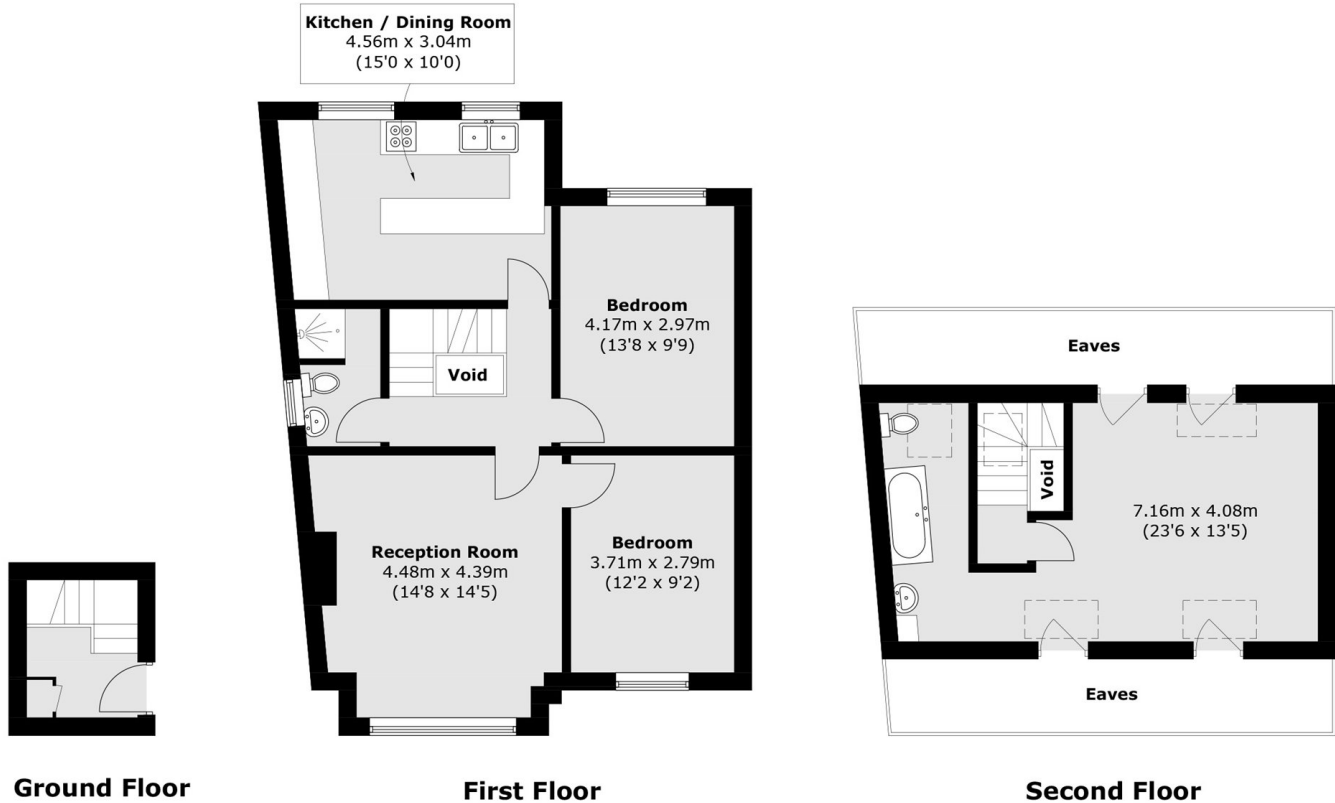
ABOUT THE HOME

A lovely three bedroom two bathroom split level maisonette measuring in excess of 1080sqft. This property is in a charming Tudor style building, which boasts spacious rooms, and is being offered chain free

Located on St. James's Drive, this property is situated around the corner from the highly regarded Bellevue Road, where there are a host of amenities on offer as well as the green open spaces of Wandsworth Common. Balham is also within easy reach which offers an array of shops, bars and restaurants as well as Balham mainline and underground stations. Wandsworth Common mainline station is just moments away.







Total area (approx.): 100.8 sq. m (1084.9 sq. ft)
(Excluding Eaves and Voids)

JACKSONS BALHAM

8-11 Balham Station Road,
London, SW12 9SG
Sales: 020 8675 6555
Lettings: 020 8675 6565

Energy Rating: We aim to make our particulars both accurate and reliable. However they are not guaranteed; nor do they form part of an offer or contract. If you require clarification on any points then please contact us, especially if you're traveling some distance to view. Please note that appliances and heating systems have not been tested and therefore no warranties can be given as to their good working order.