



Helping *you* move



## 2 Rosemary Court, Whitchurch, SY13 1DL

Offers in the Region of

**£129,950**

Situated within walking distance of Whitchurch, this modern first-floor apartment is offered with no upward chain and features an open-plan kitchen/diner/lounge with peninsula seating, two bedrooms including one with a built-in wardrobe, a contemporary bathroom, well-maintained communal gardens, and both allocated and visitor parking.

# 2 Rosemary Court, Whitchurch, SY13 1DL

## Overview

- Modern first floor apartment
- Walking distance to the town centre
- Two bedrooms
- Offered with no upward chain
- Open Plan Kitchen/Lounge/Dining Area
- Modern bathroom
- Well maintained communal garden
- Allocated parking space
- EPC D, Council tax band B



**This modern first-floor apartment is conveniently located within walking distance of Whitchurch and close to a range of local amenities. Offered for sale with no upward chain, it provides an ideal opportunity for first-time buyers, downsizers, or investors. The accommodation includes a spacious open-plan kitchen/diner/lounge, with the kitchen featuring a peninsula with seating. There are two bedrooms, with bedroom one benefiting from a built-in wardrobe. The bathroom is fitted with a modern suite, including a bath with shower over. Outside, there is a well-maintained communal garden, along with an allocated parking space and additional visitor parking.**

## Location:

Situated on the Shropshire/Cheshire/Clwyd borders, the vibrant market town of Whitchurch offers a blend of traditional charm and modern convenience. Known for its strong sense of community spirit and historic character, Whitchurch is home to a diverse range of independent shops, four major supermarkets and other well-known national retailers, ensuring residents and visitors alike have everything they need close at hand. Education is well catered for, with both primary and secondary schools in town and the surrounding villages, making it a great choice for families. The town also boasts a recently constructed health centre which also stands next to a brand new retirement development for over 55s looking to embrace retirement in the area. There is also a recently constructed leisure complex featuring an inclusive swimming pool and a range of fitness facilities for all. The renowned Hill Valley Hotel, Golf & Spa is located on the outskirts of the town which also offers great recreational amenities. For those commuting or exploring further afield, Whitchurch railway station is on a direct line between Crewe and Shrewsbury, with convenient connections to major cities including Manchester, London, and Birmingham. The town is also ideally positioned within 16 to 22 miles of larger urban centres such as Chester, Shrewsbury, Telford, Wrexham, and Crewe.



#### TENURE

We are advised that the property is Leasehold. Lease length 125 Years starting from 1/1/2002, lease length remaining 101 years. This will be confirmed by the Vendors Solicitor during the Pre- Contract Enquiries. Vacant possession upon completion.

#### LOCAL AUTHORITY

Council Tax Band B. Shropshire Council, Shirehall, Shrewsbury, SY2 6ND. Tel: 0345 678 9002

#### SERVICES

We are advised that mains electricity, water and drainage are available. Barbers have not tested any apparatus, equipment, fittings etc or services to this property, so cannot confirm that they are in working order or fit for purpose. A buyer is recommended to obtain confirmation from their Surveyor or Solicitor. For broadband and mobile supply and coverage buyers are advised to visit the Ofcom mobile and broadband checker website.

<https://checker.ofcom.org.uk/>

#### VIEWING

By arrangement with the Agents' office at 34 High Street, Whitchurch, SY13 1BB Tel: 01948 667272  
Email: whitchurch@barbers-online.co.uk



#### SERVICE CHARGE/GROUND RENT

We are advised that the service charge is currently £1,937.64 per annum and the ground rent is currently £267.42 per annum. This will be confirmed by the Vendors Solicitor during the pre-contract Enquiries.

#### DIRECTIONS

From the town centre travel into Mill Street, at the junction turn left and Rosemary Court will be found on the right hand side. Alternatively the property can be approached via Dodington and then taking the turning into Rosemary Lane.

#### PROPERTY INFORMATION

We believe this information to be accurate, but it cannot be guaranteed. The fixtures, fittings, appliances and mains services have not been tested. If there is any point which is of particular importance please obtain professional confirmation. All measurements quoted are approximate. These particulars do not constitute a contract or part of a contract.

#### ENERGY PERFORMANCE

EPC D. The full energy performance certificate (EPC) is available for this property upon request.

#### METHOD OF SALE

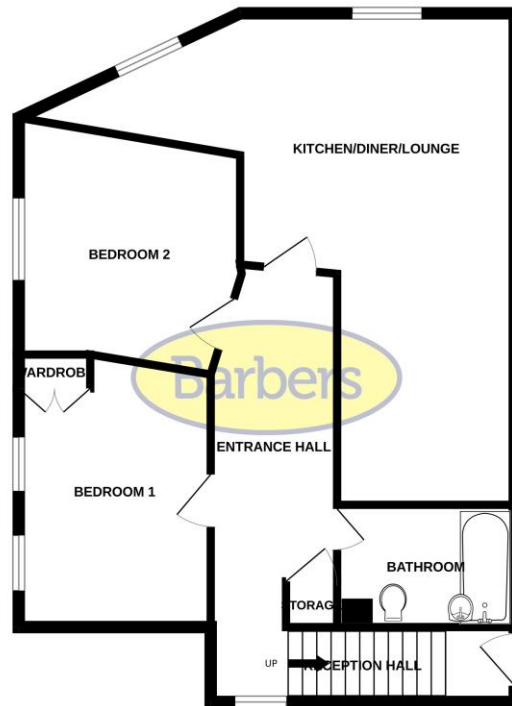
For Sale by Private Treaty.

#### AML REGULATIONS

We are required by law to conduct anti-money laundering checks on all those buying a property. Whilst we retain responsibility for ensuring checks and any ongoing monitoring are carried out correctly, the initial checks are carried out on our behalf by Movebutler who will contact you once you have had an offer accepted on a property you wish to buy. The cost of these checks is £30 (incl. VAT) per buyer, which covers the cost of obtaining relevant data and any manual checks and monitoring which might be required. This fee will need to be paid by you in advance, ahead of us issuing a memorandum of sale, directly to Movebutler, and is non-refundable.

WH39917 260326

GROUND FLOOR



Whilst every attempt has been made to ensure the accuracy of the floorplan contained here, measurements of doors, windows, rooms and any other items are approximate and no responsibility is taken for any error, omission or mis-statement. This plan is for illustrative purposes only and should be used as such by any prospective purchaser. The services, systems and appliances shown have not been tested and no guarantee as to their operability or efficiency can be given.  
Made with Metropix 12/2016

**KITCHEN/DINER/LOUNGE**  
21' 4" x 17' 2" (6.5m x 5.23m)

**BEDROOM ONE**  
12' 3" x 9' 1" (3.73m x 2.77m)

**BEDROOM TWO**  
10' 7" x 9' (3.23m x 2.74m)

**BATHROOM**  
9' x 5' 6" (2.74m x 1.68m)(MAX)

## Selling your home?

If you are considering selling your home, please contact us today for your no obligation free market appraisal. Our dedicated and friendly team will assist you 6 days a week.

Get in touch today! Tel: 01948 667272

34 High Street, Whitchurch, SY13 1BB

Tel: 01948 667272

Email: [whitchurch@barbers-online.co.uk](mailto:whitchurch@barbers-online.co.uk)

**Barbers**

IMPORTANT: we would like to inform prospective purchasers that these sales particulars have been prepared as a general guide only. A detailed survey has not been carried out, nor the services, appliances and fittings tested. Room sizes should not be relied upon for furnishing purposes and are approximate. If floor plans are included, they are for guidance purposes only and illustration purposes only and may not be to scale. If there are any important matters likely to affect your decision to buy, please contact us before viewing the property.