



22 Kilburn Green, Gateshead, NE9 7HF

Offers Over £85,000

Spacious end-terrace home with fantastic renovation potential, offering generous room sizes, a flexible layout and an excellent opportunity to create a superb family home.

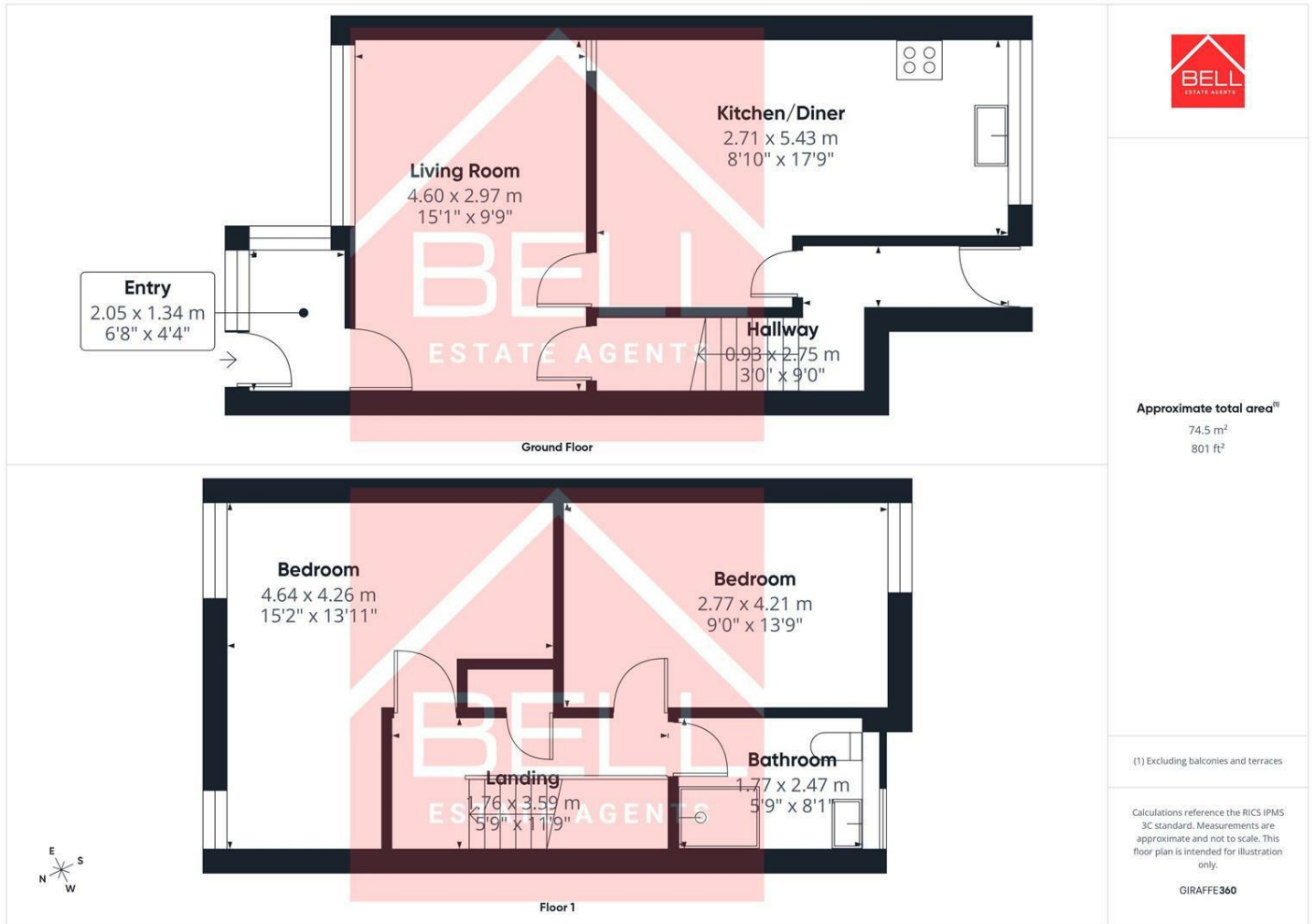
Occupying a pleasant position on the popular Kilburn Green overlooking a communal green to the front, this well-proportioned property requires full modernisation throughout and has been competitively priced to reflect the work required. It will appeal to first-time buyers, investors and buyers looking for a rewarding renovation project.

The accommodation briefly comprises an entrance porch leading into a bright lounge with useful built-in storage, opening through to a spacious kitchen/dining room fitted with a range of wall and base units. To the rear is a lobby providing access to the first floor and a convenient ground floor WC.

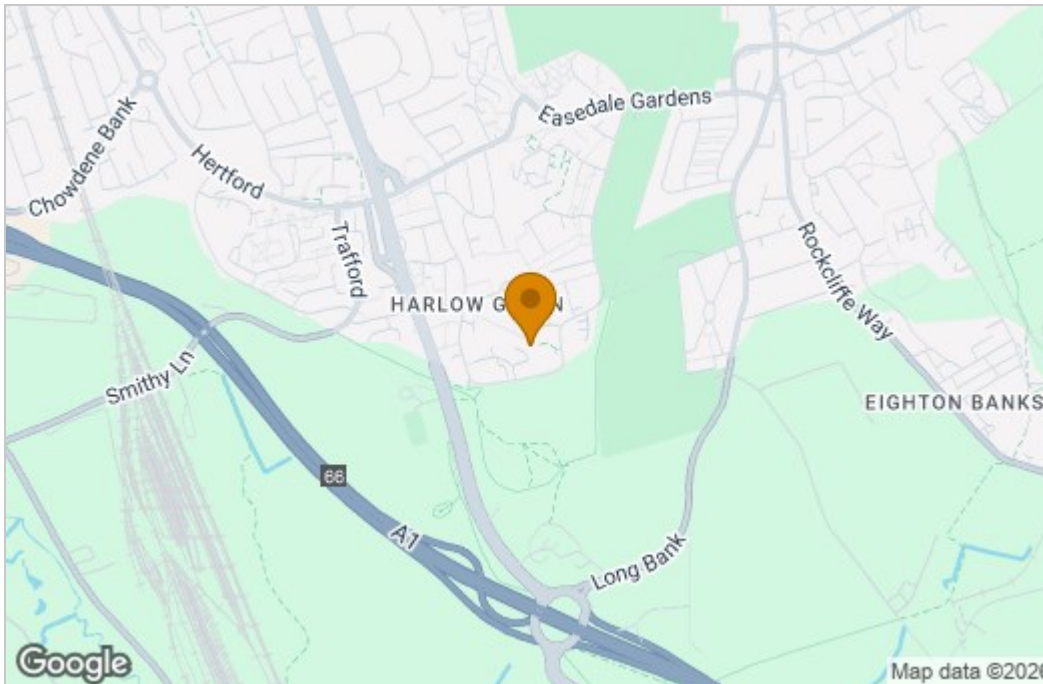
Upstairs are two generous double bedrooms, including an exceptionally large principal bedroom with excellent potential to be reconfigured into two separate bedrooms, subject to the necessary consents, creating a three-bedroom layout similar to neighbouring homes. A recently upgraded shower room completes the first-floor accommodation.

Externally, the property benefits from a split-level rear garden with a patio seating area, mature planting and brick-built outbuildings providing excellent storage. The attractive open outlook across the communal

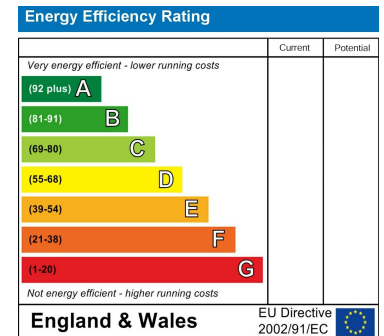
Floor Plan



Area Map



Energy Efficiency Graph



These particulars, whilst believed to be accurate are set out as a general outline only for guidance and do not constitute any part of an offer or contract. Intending purchasers should not rely on them as statements of representation of fact, but must satisfy themselves by inspection or otherwise as to their accuracy. No person in this firm's employment has the authority to make or give any representation or warranty in respect of the property.