

Sienna Buildings

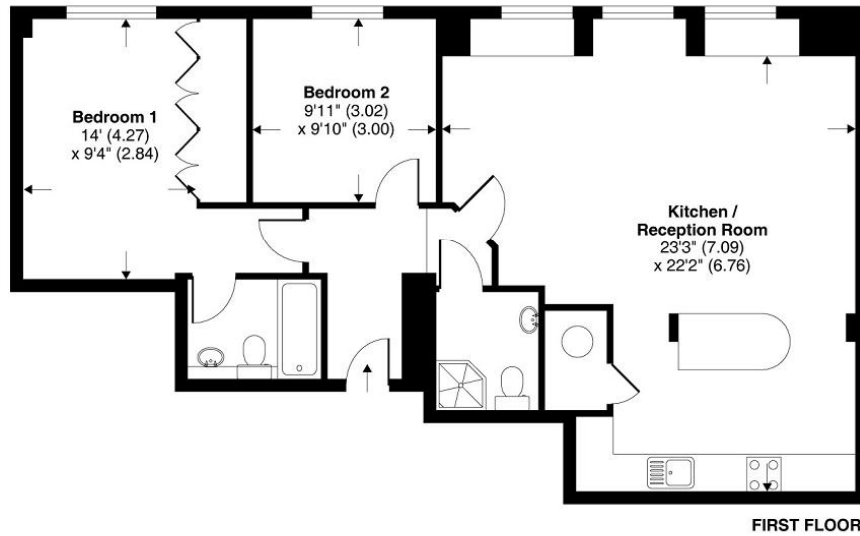
Hatton Garden, EC1N

£695 per week
(£3,011.67 pcm)

A stylish & spacious two bedroom apartment, found on the 5th floor of this purpose built development, moments from Chancery Lane and all the City has to offer. Comprising a superb reception space with open plan contemporary kitchen, principal bedroom with en-suite bathroom, further double bedroom, shower room. Finished to a high standard and benefiting from good natural light. Energy Rating: B

CHESTERTONS
Covent Garden

Sienna Building Hatton Garden London EC1



TOTAL GROSS INTERNAL FLOOR AREA 912 SQ FT 84.7 SQ METRES

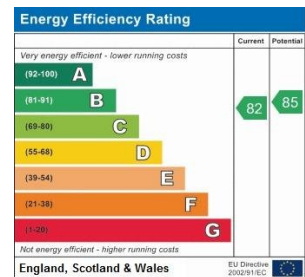
Whilst every attempt has been made to ensure the accuracy of the floor plan contained here, measurements of doors, windows and rooms are approximate and no responsibility is taken for any error, omission or misstatement. These plans are for representation purposes only as defined by RICS Code of Measuring Practice and should be used as such by any prospective purchaser. Specifically no guarantee is given on the total square footage of the property if quoted on this plan. Any figure given is for initial guidance only and should not be relied on as a basis of valuation.

Copyright nichecom.co.uk 2012 Produced for Chesterton Humberts REF : 253266

Tenure: Long Let

Furnished

Additional tenant charges apply
 Tenancy Agreement Fee: £222
 References per Tenant/Guarantor: £60
 Inventory check (approx. £100 – £250 inc. VAT)
chestertons.com/property-to-rent/applicable-fees



Chestertons Covent Garden Lettings

196 Shaftesbury Avenue
 Covent Garden
 London
 WC2H 8JF
lettings.coventgarden@chestertons.com
 020 3040 8400
chestertons.com



Chesterton Global Ltd trading as Chestertons for themselves and for the vendor of this property whose agents they are, give notice that (i) these particulars do not constitute any part of an offer or contract, (ii) all statements contained within these particulars are made without responsibility on the part of Chestertons or the vendor, (iii) whilst made in good faith, none of the statements contained within these particulars are to be relied upon as a statement or representation of fact, (iv) any intending purchasers must satisfy themselves by inspection or otherwise as to the correctness of each of the statements contained within these particulars, (v) the vendor does not make or give either Chestertons or any person in their employment any authority to make or give representation or warranty whatsoever in relation to this property. Wide angle lenses may be used. ©Copyright Chestertons | Chesterton Global Ltd | Registered Office 3rd Floor, Connaught House, 1-3 Mount Street, Mayfair, London, W1K 3NB Registered Company Number 05334580.