

25 Russell Gardens

West Drayton • • UB7 0LR

PCM: £1,400 PCM



coopers
est 1986

A newly refurbished and spacious one bedroom mid terrace house to rent located nearby to Heathrow Airport, providing good transport links to Heathrow Terminal 5 Underground Station and within short distance to the M4/M25 Motorways.

Features include a double bedroom with built in wardrobe, spacious lounge, modern kitchen, newly refurbished bathroom and great storage throughout.

Unfurnished and available now.

One Bedroom House

Newly Refurbished

Modern Kitchen

Spacious Lounge

Great Storage Throughout

Heathrow Airport

Unfurnished

M4/M25 Motorway Access

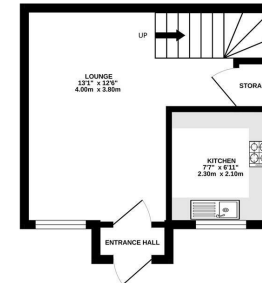
Neabry to Local Amenities

Available Date

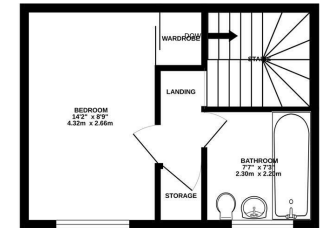
7th February 2026



GROUND FLOOR
242 sq.ft. (22.5 sq.m.) approx.



1ST FLOOR
269 sq.ft. (25.0 sq.m.) approx.



TOTAL FLOOR AREA: 511 sq.ft. (47.5 sq.m.) approx.
Whilst every attempt has been made to ensure the accuracy of the floorplan, measured base, measurements of doors, windows, rooms and any other items are approximate and no responsibility is taken for any error, omission or misstatement. This plan is for guidance purposes only and should be used as such by any prospective purchaser. The services, systems and appliances shown have not been tested and no guarantee as to their operability or efficiency can be given.
Made with Hertsmap ©2026



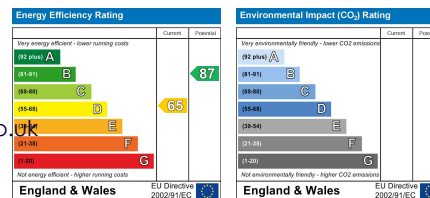
coopers
est 1986

01895 230 103

**109 Hillingdon Hill, Hillingdon Village,
Middlesex, UB10 0JQ**

propertymanagement@coopersresidential.co.uk

CoopersResidential.co.uk



Important Notice: These particulars, whilst believed to be accurate are set out as a general outline only for guidance and do not constitute any part of an offer or contract. Intending purchasers should not rely on them as statements or representation of fact, but must satisfy themselves by inspection or otherwise has the authority to make or give any representation or warranty in respect of the property.