



61 GOODGE STREET
LONDON, W1T 1TL

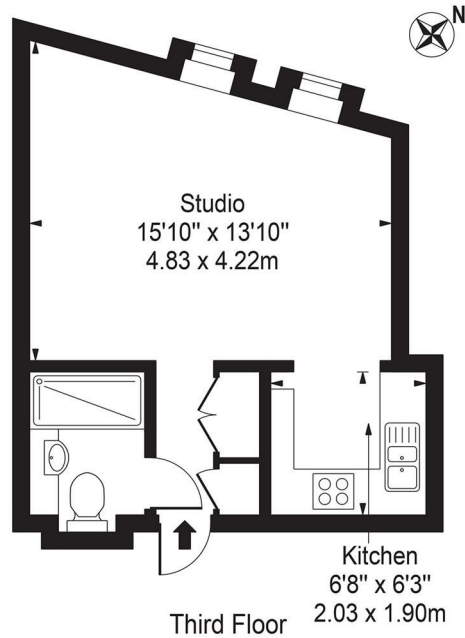
£508 PER WEEK

Cosy and spacious studio flat located in the heart of Fitzrovia, central London. Situated on the third floor (no lift access), this charming property offers comfortable living in one of London's most vibrant neighbourhoods. The studio is furnished with a double bed, small table and benefits from excellent storage throughout, making it both practical and inviting. Surrounded by fantastic transport links, shops, cafés, and restaurants, the property is ideally located for enjoying everything central London has to offer.

SANDERSONS
LONDON

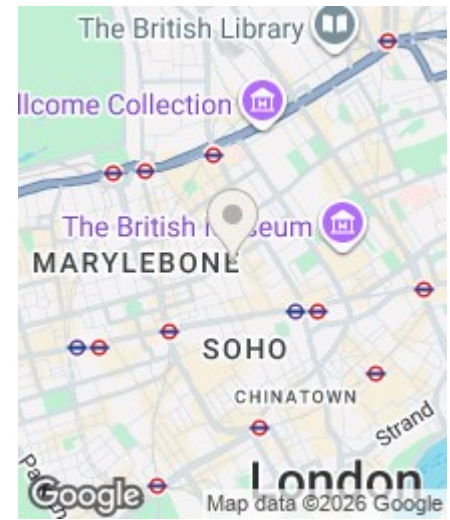
Goodge Street, W1T

Approx. Gross Internal Area 309 Sq Ft - 28.71 Sq M



For Illustration Purposes Only - Not To Scale

This floor plan should be used as a general outline for guidance only and does not constitute in whole or in part an offer or contract. Any intending purchaser or lessee should satisfy themselves by inspection, searches, enquiries and full survey as to the correctness of each statement. Any areas, measurements or distances quoted are approximate and should not be used to value a property or be the basis of any sale or let.



Energy Efficiency Rating		
	Current	Potential
<i>Very energy efficient - lower running costs</i>		
(92 plus) A		
(81-91) B		
(69-80) C	75	
(55-68) D		
(39-54) E		
(21-38) F		
(1-20) G		
<i>Not energy efficient - higher running costs</i>		
England & Wales	EU Directive 2002/91/EC	

EPC Rating: C Council Tax Band: C

Agents Note: Whilst every care has been taken to prepare these particulars, they are for guidance purposes only. All measurements are approximate and are for general guidance purposes only and whilst every care has been taken to ensure their accuracy, they should not be relied upon and potential buyers/tenants are advised to recheck the measurements

108 Holland Park Avenue
London
W11 4UA

020 7602 6725
romana@sandersonslondon.co.uk
sandersonslondon.co.uk

SANDERSONS
LONDON