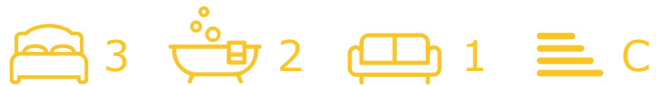




1 James Bentley Walk

, Manchester, M40 1JD

Offers In Excess Of £230,000

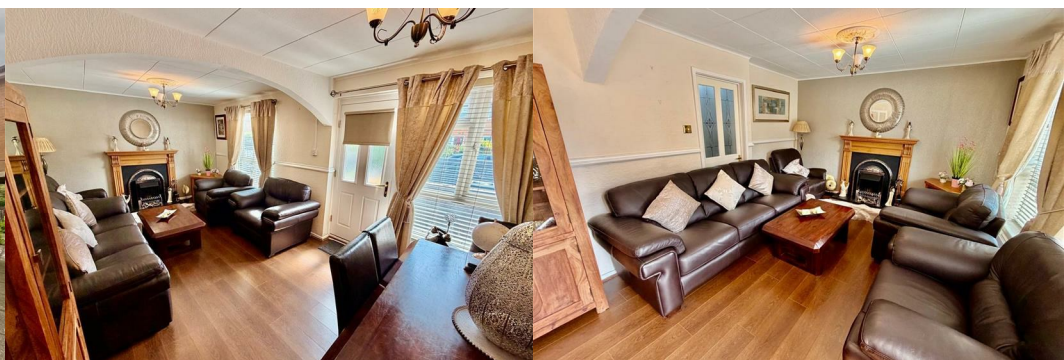


Well-Presented Three-Bedroom Semi-Detached Home | No Onward Chain | Popular M40 Location

Situated on the popular James Bentley Walk in the highly sought-after M40 area of Manchester, this well-presented three-bedroom semi-detached home is offered with no onward chain, making it an ideal purchase for first-time buyers, growing families, or investors seeking a move-in-ready property.

The home enjoys a convenient residential location with excellent access to Manchester City Centre, local schools, shops, and transport links, including nearby Metrolink stations and major road networks. The area offers an attractive balance of suburban living while remaining well connected to the city centre.

Internally, the property is well maintained throughout. The ground floor comprises a spacious open-plan living and dining area, providing a versatile space for both everyday family life and entertaining. The contemporary fitted kitchen offers a range of modern units, ample worktop space, . A convenient downstairs WC completes the ground-floor



Living / Dining room

Kitchen

Wc

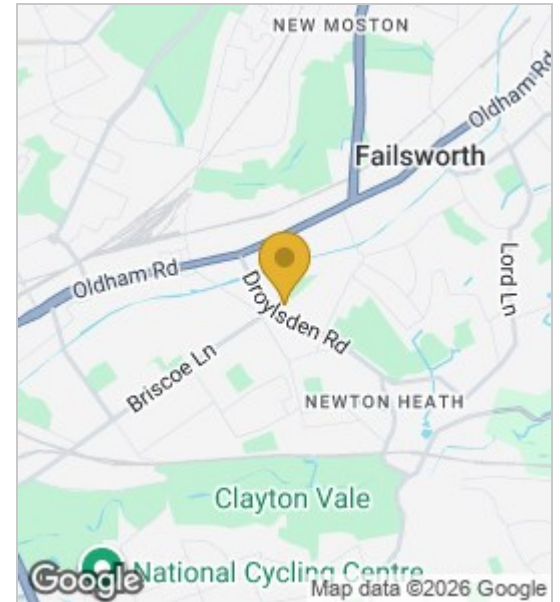
Bedroom 1

Bedroom 2

Bedroom 3

Shower room

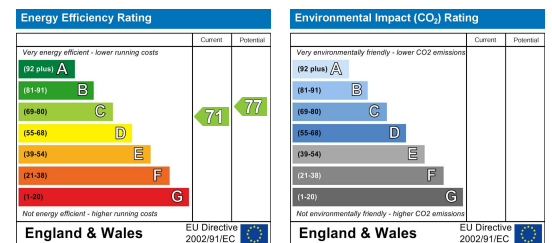
Area Map



Floor Plans



Energy Efficiency Graph



These particulars, whilst believed to be accurate are set out as a general outline only for guidance and do not constitute any part of an offer or contract. Intending purchasers should not rely on them as statements of representation of fact, but must satisfy themselves by inspection or otherwise as to their accuracy. No person in this firm's employment has the authority to make or give any representation or warranty in respect of the property.

