



**Countess Way, Brooklands, Milton Keynes, MK10 7HZ**

**welcome to**

## **Countess Way, Brooklands, Milton Keynes**

50% SHARED OWNERSHIP - This well-presented two-bedroom ground floor apartment is situated on the popular Countess Way within the sought-after Brooklands development, offering stylish and low-maintenance living in a convenient location.

### **Entrance Hall**

Three Storage cupboard and doors to the kitchen/living room, both bedrooms and the family bathroom.

### **Kitchen/Living Room**

Living area - TV point, carpet, radiator and double-glazed window.

Kitchen area - Fitted with a mix of wall and base units with work top over, stainless steel sink with mixer tap and drainer, integrated electric oven and gas hob with extractor fan over. Integrated washing machine and fridge/freezer. Double-glazed window.

### **Bedroom One**

Radiator and double-glazed window.

### **Bedroom Two**

Radiator and double-glazed window.

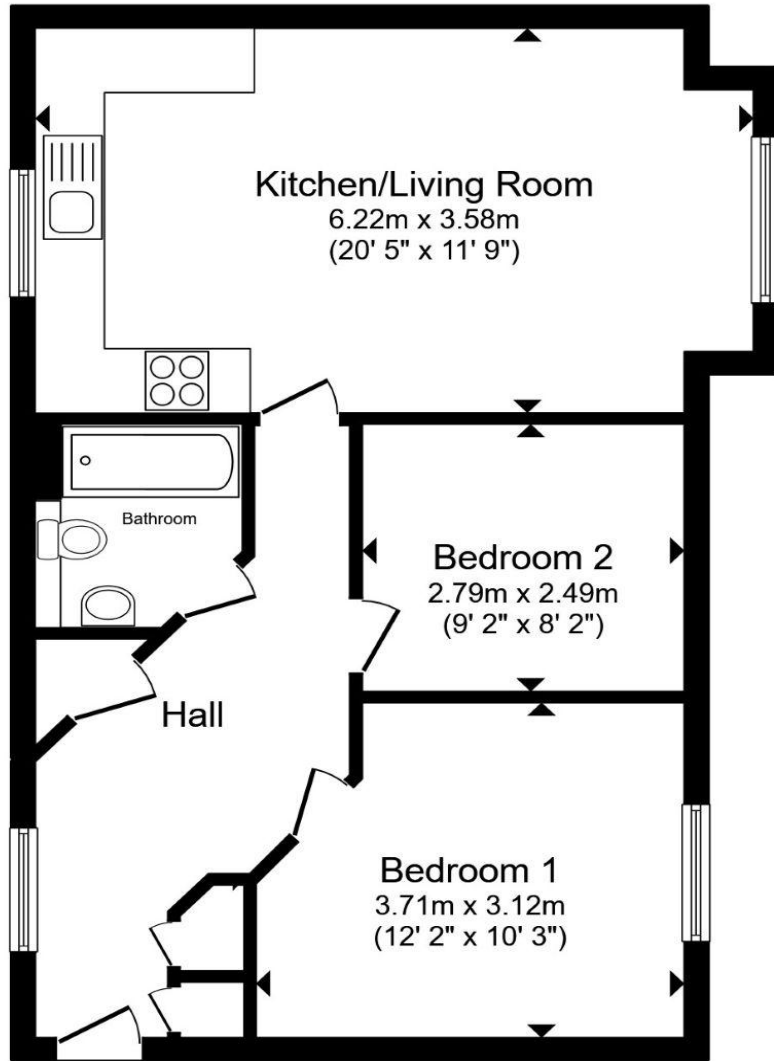
### **Bathroom**

Partially tiled with a pedestal wash hand basin with mixer tap, low-level WC and a bath. Double-glazed obscured window.

### **Outside**

#### **Parking**

There is allocated parking.



**Floor Plan**

Total floor area 54.2 m<sup>2</sup> (584 sq.ft.) approx

This floor plan is for illustrative purposes only. It is not drawn to scale. Any measurements, floor areas (including any total floor area), openings and orientation are approximate. No details are guaranteed, they cannot be relied upon for any purpose and they do not form part of any agreement. No liability is taken for any error, omission or misstatement. A party must rely upon its own inspection(s). Powered by [www.propertybox.io](http://www.propertybox.io)



welcome to  
**Countess Way,  
Brooklands, Milton Keynes**

- 50% SHARED OWNERSHIP
- TWO-BEDROOM GROUND FLOOR
- OPEN-PLAN LIVING/DINING AREA
- ALLOCATED PARKING
- WELL-MAINTAINED DEVELOPMENT

Tenure: Leasehold EPC Rating: B  
Council Tax Band: B Service Charge: Ask Agent  
Ground Rent: 150.00

This is a Leasehold property with details as follows; Term of Lease 125 years from 31 May 2018. Should you require further information please contact the branch. Please Note additional fees could be incurred for items such as Leasehold packs.

shared ownership

**£125,000**



**view this property online** [brownandmerry.co.uk/Property/NPL108089](https://www.brownandmerry.co.uk/Property/NPL108089)



Property Ref:  
NPL108089 - 0005

1. MONEY LAUNDERING REGULATIONS Intending purchasers will be asked to produce identification documentation at a later stage and we would ask for your co-operation in order that there is no delay in agreeing the sale. 2. These particulars do not constitute part or all of an offer or contract. 3. The measurements indicated are supplied for guidance only and as such must be considered incorrect. Potential buyers are advised to recheck measurements before committing to any expense. 4. We have not tested any apparatus, equipment, fixtures or services and it is in the buyers interest to check the working condition of any appliances. 5. Where an EPC, or a Home Report (Scotland only) is held for this property, it is available for inspection at the branch by appointment. If you require a printed version of a Home Report, you will need to pay a reasonable production charge reflecting printing and other costs. 6. We are not able to offer an opinion either written or verbal on the content of these reports and this must be obtained from your legal representative. 7. Whilst we take care in preparing these reports, a buyer should ensure that his/her legal representative confirms as soon as possible all matters relating to title including the extent and boundaries of the property and other important matters before exchange of contracts.

Brown & Merry is a trading name of Sequence (UK) Limited which is registered in England and Wales under company number 4268443, Registered Office is Cumbria House, 16-20 Hockliffe Street, Leighton Buzzard, Bedfordshire, LU7 1GN. VAT Registration Number is 500 2481 05.

brown & merry



**01908 611242**



[newportpagnell@brownandmerry.co.uk](mailto:newportpagnell@brownandmerry.co.uk)



74A High Street, Newport Pagnell, MILTON  
KEYNES, Buckinghamshire, MK16 8AQ



**[brownandmerry.co.uk](https://www.brownandmerry.co.uk)**