



Price
£475,000

Freehold

4x  2x  1x 

**The Arlington,
Meadowbridge, Herne
Bay, Kent, CT6**

Wards
Helping you move forwards



Main features

- **Bespoke design fully fitted kitchen with integrated Bosch appliances**
- **Contemporary style sanitaryware to bathroom and en-suite with heated towel rails**
- **Built-in wardrobe to bedroom 1**
- **Ground floor study**
- **Air source heat pump**
- **Fencing, turf and patio to rear garden**
- **Car port and off-road parking with EV charging point**

Accommodation

GROUND FLOOR

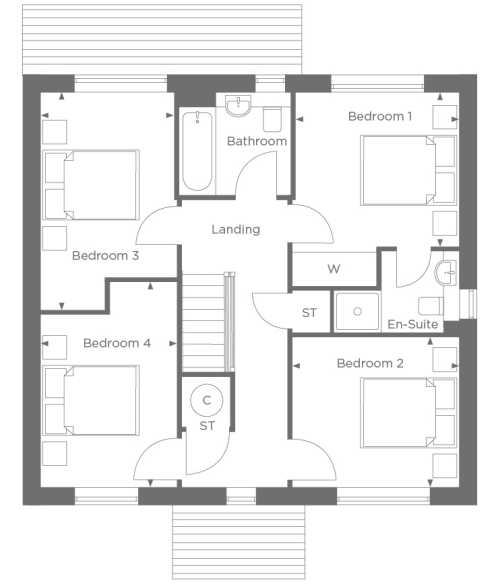
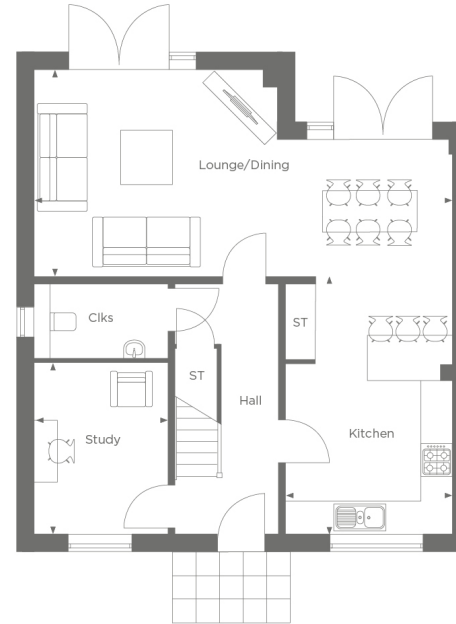
Entrance Hall
 Kitchen: 16'4 x 10'6 (4.98m x 3.20m)
 Lounge/Dining: 26'6 x 13'1 (8.08m x 3.99m)
 Study: 10'10 x 8'4 (3.30m x 2.54m)
 Cloakroom

FIRST FLOOR

Landing
 Bedroom 1: 10'4 x 9'8 (3.15m x 2.95m)
 En-Suite Shower Room
 Bedroom 2: 10'6 x 9'6 (3.20m x 2.90m)
 Bedroom 3: 13'9 x 8'7 (4.19m x 2.62m)
 Bedroom 4: 13'0 x 8'7 (3.97m x 2.62m)
 Bathroom

OUTSIDE

Front Garden
 Rear Garden
 Car Port
 Off-Road Parking



Unable to display material information. Please check with the branch for material information details for this property