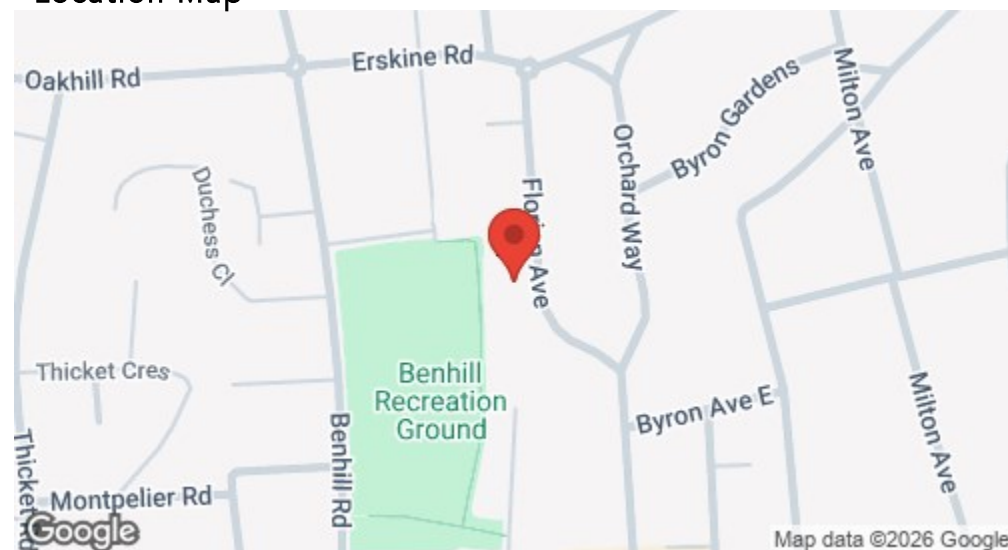
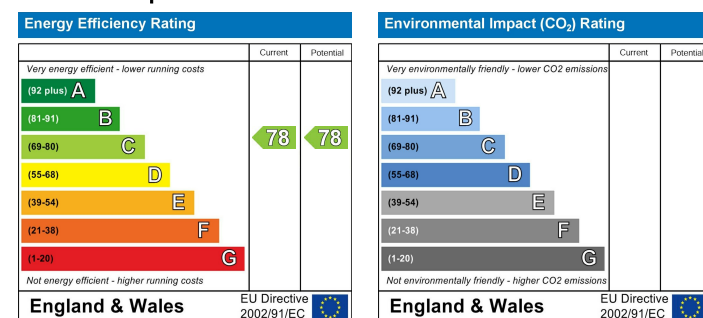


Location

Location Map



EPC Graph



Important Note

Centro Residential Sales and Lettings limited have not tested any services, heating system, electrical system, appliances, fixtures and fittings, that may be included in this property and would advise interested parties to satisfy themselves as to their condition or investigating the presence of any deleterious materials.

Viewing: Strictly by appointment through:

CENTRO RESIDENTIAL SALES AND LETTINGS LIMITED

Tel: 020 8401 5000

E-mail: residential@centro.plc.uk

See a selection of our properties at www.centro.plc.uk

£2,200 Per Month - 28th August 2026

Florian Avenue, Sutton, SM1 3QH



Description

- Two Bedrooms
- Impeccable Finish
- Private Garden
- Additional Outdoor Kitchen
- Off Street Parking
- Built In Storage
- Council Tax Band C
- EPC Rating C

Features

- Gas Central Heating
- Double Glazing
- Garden

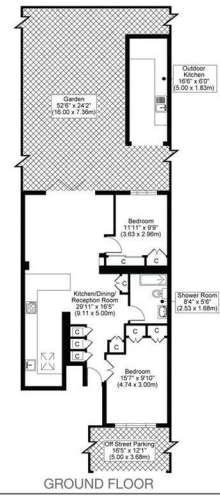
What you need to know

- Term: 12 months
- Rent: £2200pcm exclusive of bills
- Security deposit: £2538.00
- Council Tax Band C
- Energy Rating: C



Floor Plan

FLORIAN AVENUE, SM1
TOTAL APPROX FLOOR PLAN AREA INCLUDING OUTBUILDING 827 SQ.FT (77 SQ.M)
TOTAL APPROX FLOOR PLAN AREA EXCLUDING OUTBUILDING 728 SQ.FT (68 SQ.M)



All measurements, walls, doors, windows, fittings and their appliances, their size and locations are shown conventionally and are approximate only and cannot be regarded as being a representation either by the seller or his agent.



For illustration purposes only



All dimensions and measurements are approximate and for guidance only.

Just Centro's Opinion...

Welcome to this immaculately finished ground floor two bedroom apartment located on Florian Avenue in Sutton, Offering a perfect blend of character and modern living.

The apartment features two well-proportioned bedrooms, an inviting reception room with bifold doors leading to the stunning rear garden, a modern fitted kitchen with appliances and a beautifully finished bathroom.

One of the standout features of this apartment is the private rear garden, complete with an outdoor kitchen. This lovely outdoor space is perfect for al fresco dining and summer gatherings, allowing you to enjoy the fresh air in the comfort of your own home. Additionally, the property benefits from off-street parking.

The apartment also includes carefully thought out built-in storage, ensuring that you have plenty of space to keep your belongings organised and tidy. Immaculately finished throughout, this property is ready for you to move in and make it your own.

Situated in a desirable location, this apartment offers a wonderful opportunity to enjoy the best of Sutton living. With its charming features and modern amenities, this property is not to be missed. We invite you to come and experience the warmth and comfort of this delightful home.

Additional Photos

