

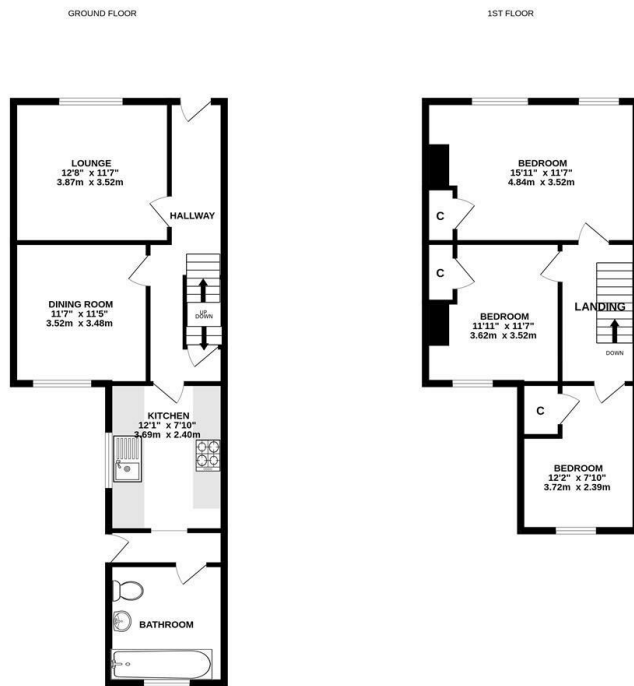
KEYSTONE



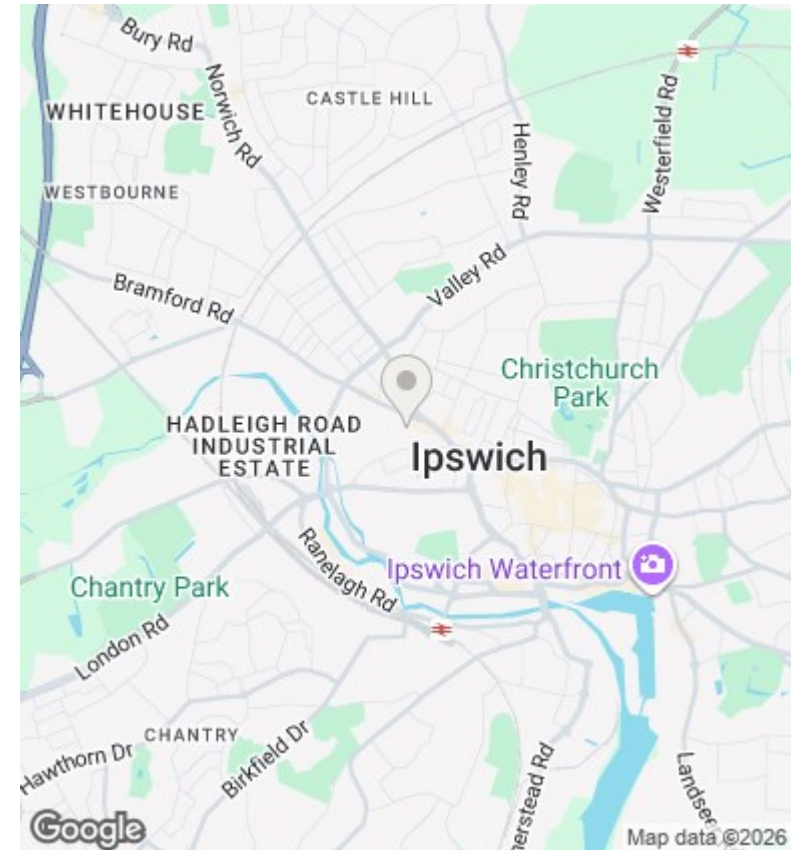
Wilberforce Street, Ipswich, IP1 2JW

£1,095 Per Month

- Unfurnished three bedroom terraced house
- Two receptions
- Gas Central heating, double glazed
- EPC rating D
- West of Ipswich, close to Town Centre
- Fitted kitchen (appliances not included)
- Enclosed rear garden
- Entrance hall
- Ground floor bathroom
- Permit parking available



While every effort has been made to ensure the accuracy of the description contained here, measurements of doors, windows, rooms and any other items are approximate and no responsibility is taken for any error, omission or misstatement. This plan is for illustrative purposes only and should be used in such by any prospective purchaser. The fixtures, systems and appliances shown have not been tested and no guarantee is given as to their operability or efficiency can be given. Made with Metreapp ©2025



Directions

Viewings

Viewings by arrangement only. Call 01473 221 399 to make an appointment.

EPC Rating:

D

Energy Efficiency Rating		
	Current	Potential
<i>Very energy efficient - lower running costs</i>		
(92 plus) A		
(81-91) B		87
(69-80) C		
(55-68) D	60	
(39-54) E		
(21-38) F		
(1-20) G		
<i>Not energy efficient - higher running costs</i>		
England & Wales	EU Directive 2002/91/EC	