

## Blenheim Terrace, NW8

£519 Per week

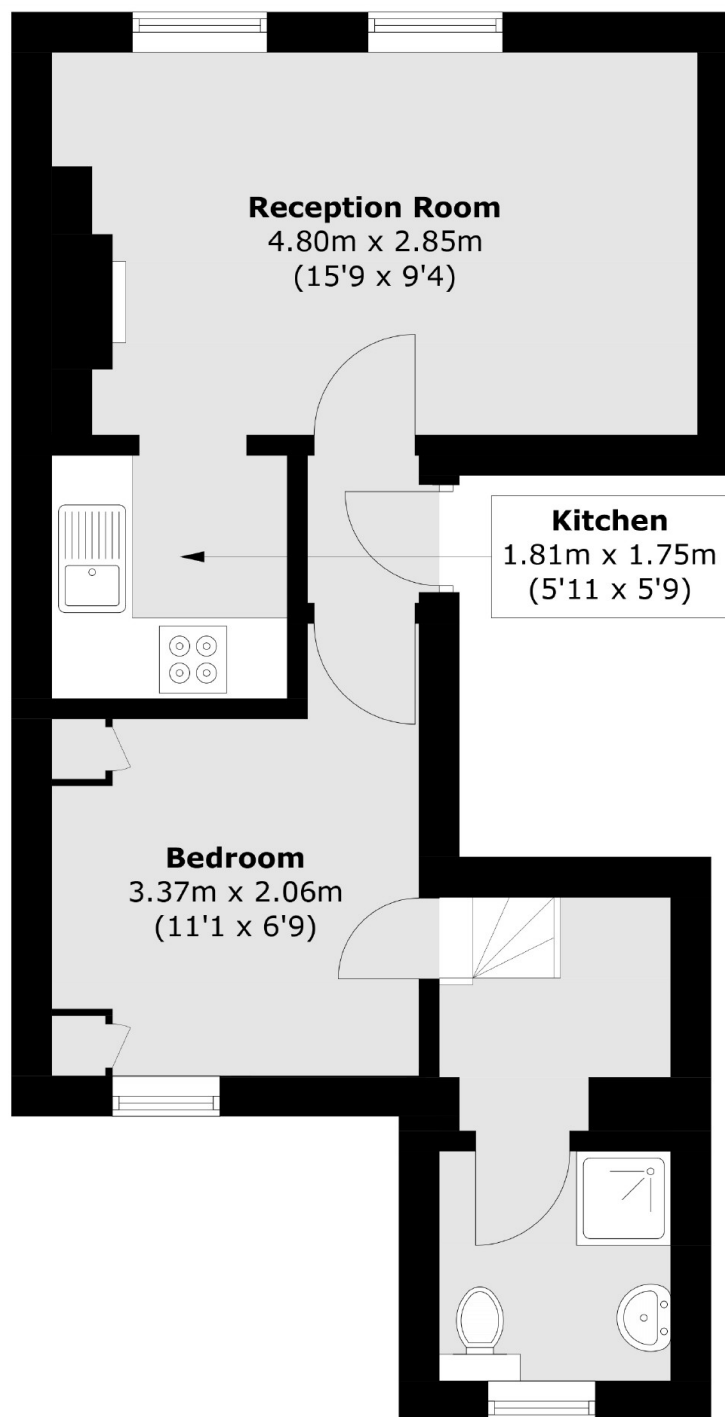
A modern one bedroom flat, on the first floor of a charming period conversion, is quietly situated on a popular tree-lined street in the heart of St Johns Wood. This flat features wood floors and high ceilings throughout, with a double bedroom that includes built-in wardrobes. The semi-open plan kitchen is equipped with integrated appliances, including a dishwasher.

Blenheim Terrace is a residential street just off of Abbey Road close to local shops and cafés. St Johns Wood Underground station is also close by giving easy access to the both the City and West End.

### Features

- One Double Bedroom
- First Floor Flat
- Wood Floors Throughout
- High Ceilings
- Unfurnished
- Period Conversion

# Blenheim Terrace, London, NW8



Total area (approx.): 33.2 sq. m (357.4 sq. ft)