



Aqueduct Way, Eccles

Manchester



In Excess of £340,000

# Aqueduct Way

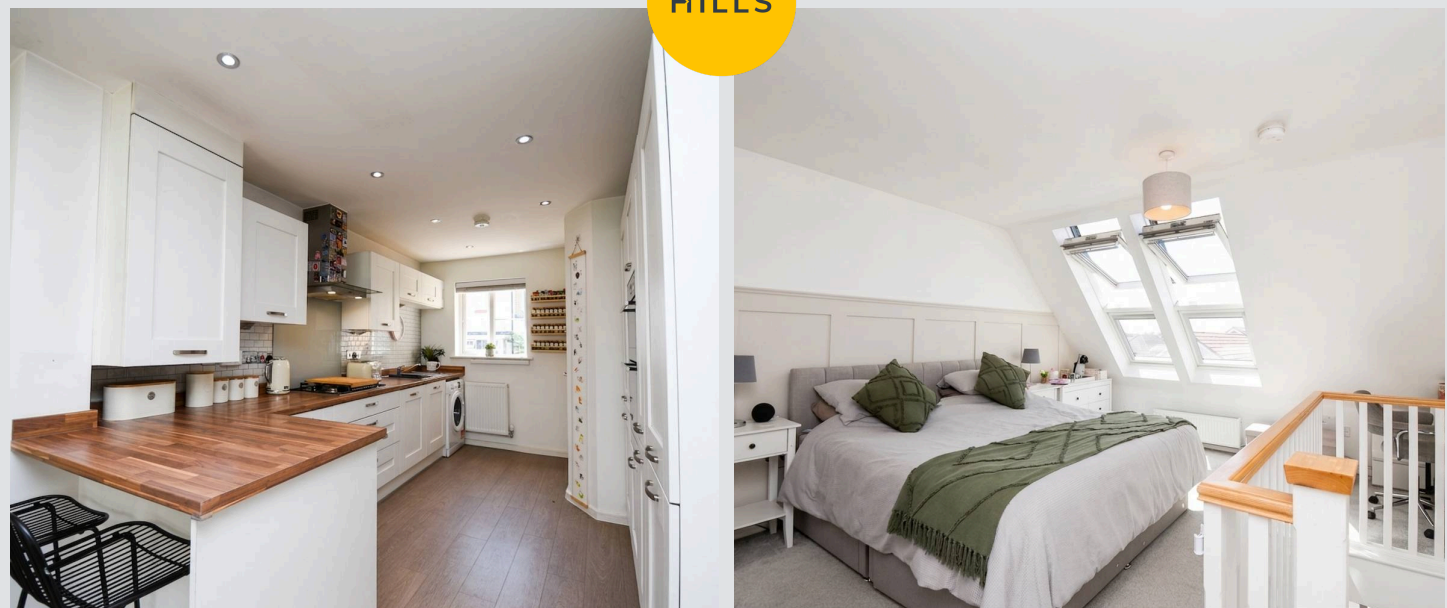
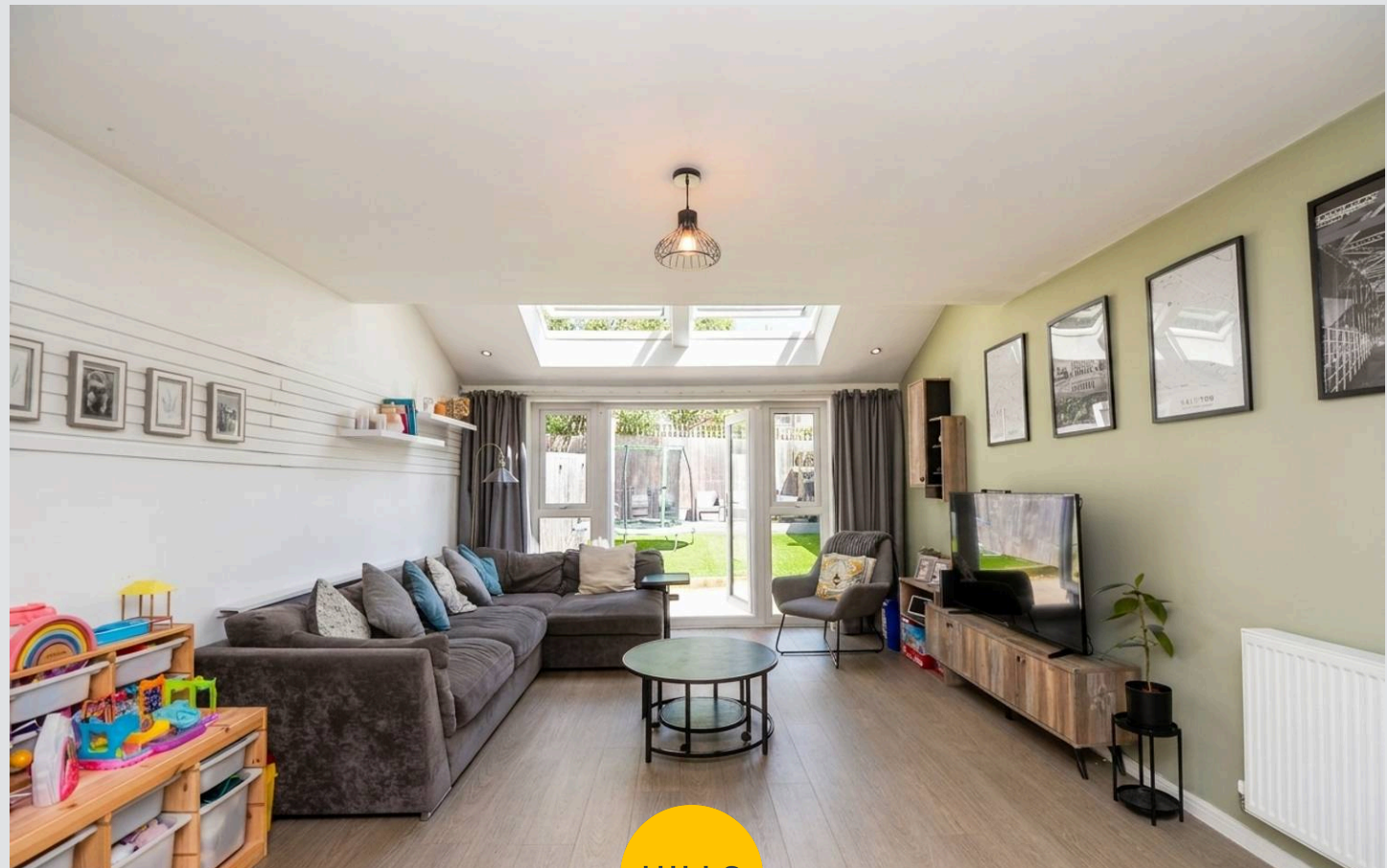
Eccles, Manchester

Introducing this fabulous three-bedroom semi-detached property nestled on the esteemed Havenswood Development, this property embodies modern living across three meticulously laid out floors.

Council Tax band: C

Tenure: Freehold

- Beautiful Three Bedroom Semi Detached Situated on the Desirable Havenswood Development
- Laid over Three Floors
- Open Plan Kitchen, Living & Dining Space
- Three Spacious Bedrooms, with the Master an Impressive 14ft
- Three Piece Family Bathroom, En Suite & Guest W.C.
- Low Maintenance Landscaped Rear Garden
- Off Road Parking for Multiple Cars
- Surrounded by Amenities, Excellent Transport Links, Parks & Outstanding Schools



**Entrance Hallway**

9' 9" x 7' 0" (2.97m x 2.13m)

**Lounge**

17' 5" x 12' 10" (5.31m x 3.91m)

**Kitchen**

14' 9" x 9' 4" (4.49m x 2.85m)

**Downstairs W.C.**

3' 5" x 6' 4" (1.05m x 1.94m)

**Landing**

**Bedroom Two**

10' 10" x 12' 11" (3.31m x 3.94m)

**Bedroom Three**

6' 10" x 9' 11" (2.08m x 3.02m)

**Bathroom**

7' 7" x 6' 4" (2.32m x 1.93m)

**Second Landing**

4' 8" x 6' 5" (1.43m x 1.96m)

**Bedroom One**

15' 7" x 12' 10" (4.76m x 3.92m)

**En suite**

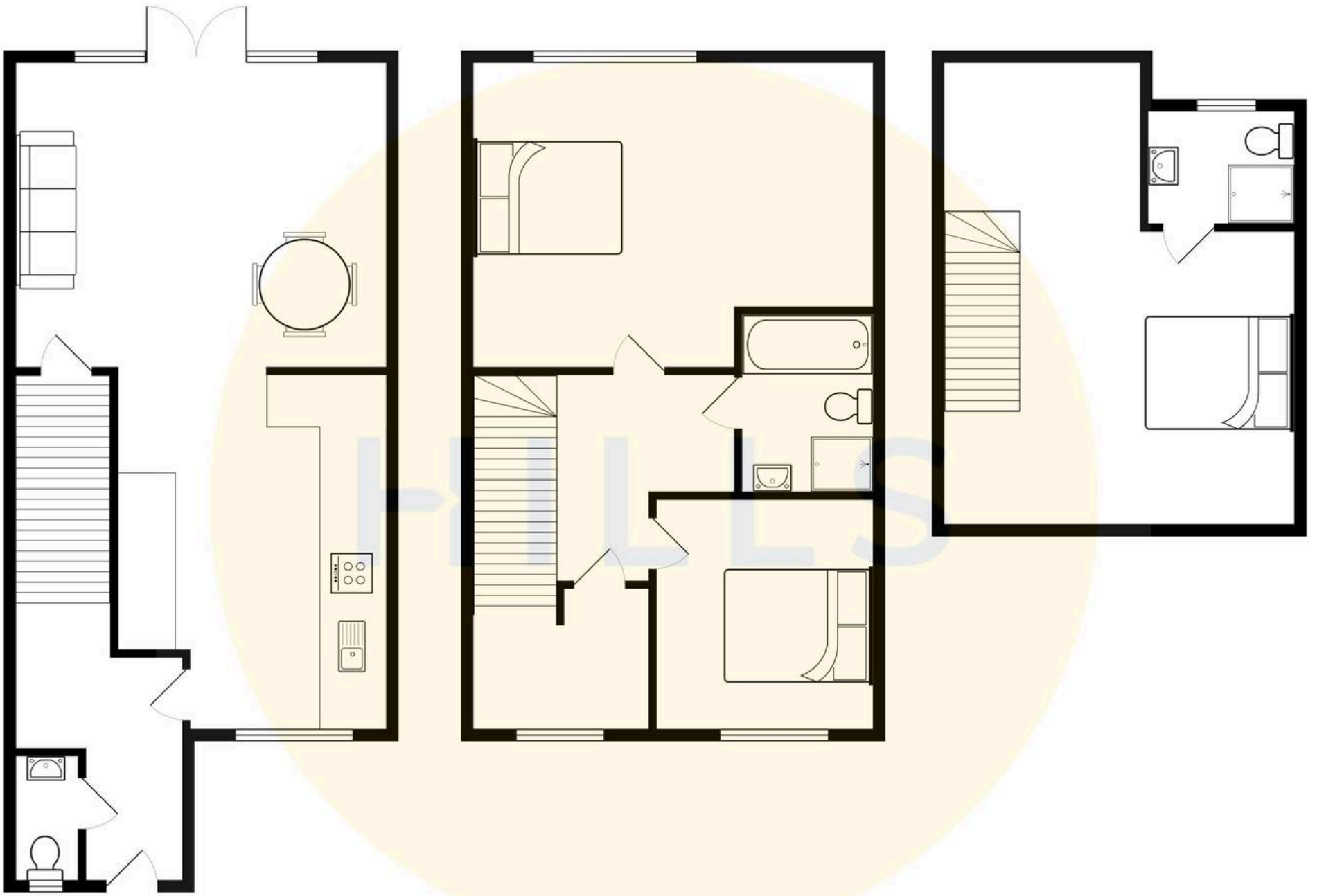
7' 2" x 6' 10" (2.18m x 2.09m)





HILLS







## Hills | Salfords Estate Agent

Hills Residential, Sentinel House Albert Street – M30 0SS

0161 707 4900

[sales@hills.agency](mailto:sales@hills.agency)

[www.hills.agency/](http://www.hills.agency/)



By law, we are required to conduct anti-money laundering checks on all potential buyers and sellers. In line with HMRC guidelines, our trusted partner, Coadjute, will securely manage these checks on our behalf. A non-refundable fee of £45 + VAT per person will apply, and Coadjute will handle the payment. Once an offer is accepted, Coadjute will send a secure link for you to complete the biometric checks. These checks must be completed before we can send the memorandum of sale to all parties. PLEASE NOTE: The Agent has not tested any equipment, fixtures, fittings or services so cannot verify that they are in working order or fit for the purpose. References to the properties tenure are based on information supplied by the seller. You are advised to check the availability of this property before travelling any distance to view. Every effort has been made to ensure these particulars are correct and not misleading but their accuracy is not guaranteed nor do they form part of any contract.