



Pitcairn Road, Ipswich, IP1 5BX

welcome to

Pitcairn Road, Ipswich

This well-presented, three bedroom home benefits from an extended lounge/diner and kitchen, a ground floor shower room, a 1st floor bathroom, a paved rear garden and a gated driveway with ample off street parking. NO ONWARD CHAIN!!

Entrance Hall

Tiled flooring, stairs to the first floor, one radiator, and an understairs storage cupboard.

Lounge/Diner

Double glazed window to the front, wooden flooring, two radiators, TV point, fitted shelving, French doors to the garden, a feature fireplace and space for a table and chairs.

Kitchen

Double glazed window to side, glazed doors to the garden, eye and base level units in high gloss cream with marble effect worktop surfaces, a sink plus drainer and chrome mixer tap, spotlights, tiled splashback, an integrated double oven with electric hob and extractor hood, an integrated fridge/freezer, dishwasher and washing machine.

Ground Floor Shower Room

A double shower with tiled splashback, grey tiled flooring, low level WC, wash hand basin with storage under, tiled flooring, chrome heated towel rail and double glazed window to the front.

First Floor Landing

Double glazed window to the side.

Master Bedroom

Double glazed window to the front, carpet flooring, one radiator and a triple fitted wardrobe.

Bedroom Two

Double glazed window to the rear, carpet flooring, one radiator and a built in, mirrored wardrobe.

Bedroom Three

Double glazed window to the rear, grey wood effect flooring and one radiator.

Bathroom

Double glazed window to the rear, a bath with overhead shower, glass screen and tiled splashback, a vanity sink, extractor fan, low level WC, chrome heated towel rail and tiled flooring.

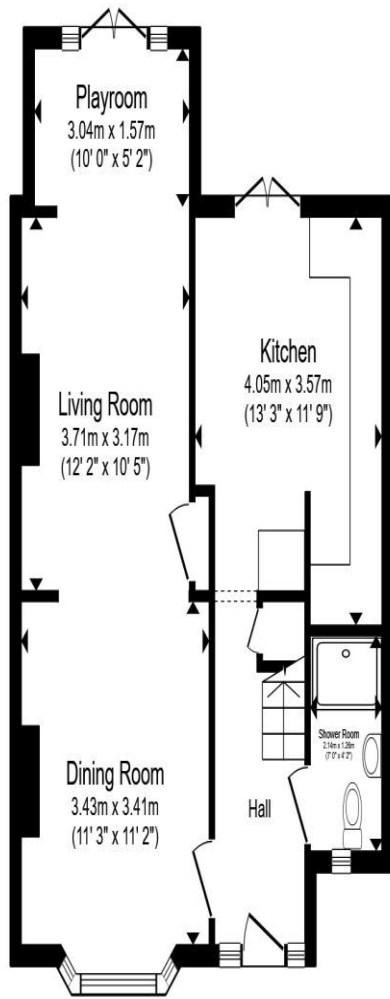
Outside:

Front Garden

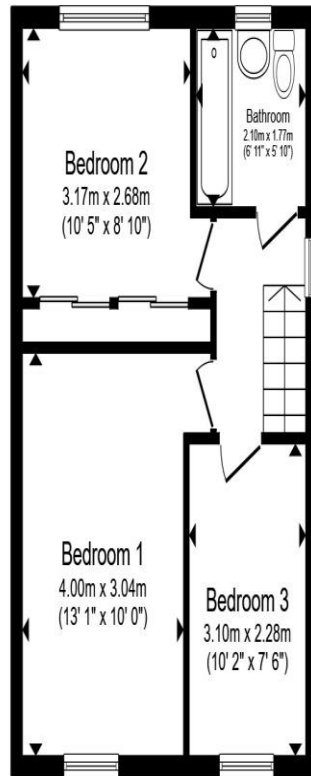
A block paved driveway, providing off street parking, a side access gate, flower beds, shrubs, a lawned area and partial fenced border.

Rear Garden

A tiered rear garden with a patio seating area, a decked seating area, trees, shrubs, flower beds, fully enclosed border and a side access gate.



Ground Floor



First Floor

Total floor area 91.7 m² (987 sq.ft.) approx

This floor plan is for illustrative purposes only. It is not drawn to scale. Any measurements, floor areas (including any total floor area), openings and orientation are approximate. No details are guaranteed, they cannot be relied upon for any purpose and they do not form part of any agreement. No liability is taken for any error, omission or misstatement. A party must rely upon its own inspection(s). Powered by www.propertybox.io



welcome to
Pitcairn Road,
Ipswich

- No onward chain
- Three bedrooms
- Extended lounge/diner & kitchen
- Ground floor shower room & 1st floor bathroom
- Ample off street parking

Tenure: Freehold EPC Rating: D
Council Tax Band: B

£275,000



view this property online williamhbrown.co.uk/Property/IPS121472



Property Ref:
IPS121472 - 0004

1. MONEY LAUNDERING REGULATIONS Intending purchasers will be asked to produce identification documentation at a later stage and we would ask for your co-operation in order that there is no delay in agreeing the sale. 2. These particulars do not constitute part or all of an offer or contract. 3. The measurements indicated are supplied for guidance only and as such must be considered incorrect. Potential buyers are advised to recheck measurements before committing to any expense. 4. We have not tested any apparatus, equipment, fixtures or services and it is in the buyers interest to check the working condition of any appliances. 5. Where an EPC, or a Home Report (Scotland only) is held for this property, it is available for inspection at the branch by appointment. If you require a printed version of a Home Report, you will need to pay a reasonable production charge reflecting printing and other costs. 6. We are not able to offer an opinion either written or verbal on the content of these reports and this must be obtained from your legal representative. 7. Whilst we take care in preparing these reports, a buyer should ensure that his/her legal representative confirms as soon as possible all matters relating to title including the extent and boundaries of the property and other important matters before exchange of contracts.

William H Brown is a trading name of Sequence (UK) Limited which is registered in England and Wales under company number 4268443, Registered Office is Cumbria House, 16-20 Hockliffe Street, Leighton Buzzard, Bedfordshire, LU7 1GN. VAT Registration Number is 500 2481 05.



william h brown



01473 226101



ipswich@williamhbrown.co.uk



16-18 Wolsey House, Princes Street, IPSWICH,
Suffolk, IP1 1QT



williamhbrown.co.uk