



255 Station Road, Bagworth, Coalville, LE67 1BL
£195,000

The Property Perspective

Garden Place, Victoria Street, Altrincham, WA14 1ET

Tel: 08456 800 262 Fax: 08456 800 272

Email: enquiries@thepropertyperspective.co.uk www.thepropertyperspective.co.uk

PROPERTY
PERSPECTIVE

ENTRANCE HALL

Door through to ground floor accommodation

DINING AREA

Double glazed window, stairs to first floor, wood laminated flooring

LIVING AREA

Double glazed window, stairs to first floor, wood laminated flooring

KITCHEN

Re fitted kitchen area with integrated and free standing appliances

BATHROOM

Re fitted bathroom with matching suite and tiled surrounds

FIRST FLOOR LANDING

Loft access, carpet flooring

MAIN BEDROOM

Double glazed window, carpet flooring

EN SUITE

Re fitted en suite area

BEDROOM

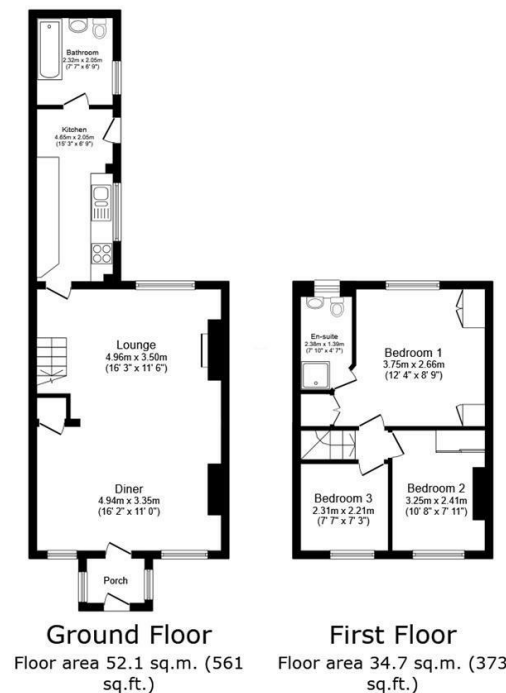
Double glazed window, carpet flooring

BEDROOM

Double glazed window, carpet flooring

COURTYARD GARDENS

Low maintenance courtyard gardens with rear access to parking



Total floor area: 86.8 sq.m. (934 sq.ft.)

This floor plan is for illustrative purposes only. It is not drawn to scale. Any measurements, floor areas (including any total floor area), openings and orientations are approximate. No details are guaranteed, they cannot be relied upon for any purpose and do not form any part of any agreement. No liability is taken for any error, omission or misstatement. A party must rely upon its own inspection(s). Powered by www.PropertyBox.io

PROPERTY
PERSPECTIVE