



Lauderdale Mansions | Maida Vale | London | W9

Asking Price - Asking price £1,195,000



- Three double bedrooms
- Two bathrooms
- Spacious reception room
- Open plan kitchen / dining room
- Balcony
- Porter
- Communal garden
- Close to amenities

Set on the third floor of the highly sought after Lauderdale Mansions, this beautifully presented three bedroom, two bathroom apartment offers generous and well balanced accommodation within an impressive red-brick Edwardian mansion block.

The apartment features a spacious reception room, providing an ideal setting for both entertaining and everyday living, with direct access to a private balcony at the front of the building. A separate kitchen/breakfast room is positioned to the rear of the apartment and offers a practical and comfortable space for family dining.

The principal bedroom is generously proportioned and benefits from excellent built-in storage. The second bedroom enjoys direct access to the private balcony, allowing for an abundance of natural light, while the third bedroom is well sized and versatile, making it suitable for use as a guest bedroom, home office or additional bedroom. Two well appointed bathrooms further enhance the practicality of this apartment.





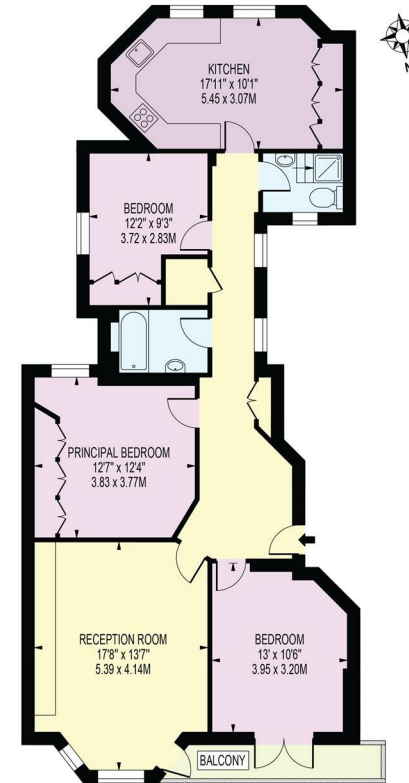
Lauderdale Mansions enjoys the benefit of beautifully maintained communal gardens, providing an attractive and tranquil setting for residents. The gardens are well landscaped and offer a rare sense of space and greenery, enhancing the overall appeal of this highly regarded mansion block and contributing to its prime residential character.

Ideally located for transport, Maida Vale and Warwick Avenue Underground stations (Bakerloo Line) are within easy reach, offering convenient access to the West End and the City. Paddington Station is also nearby, providing Hammersmith & City, Circle and District line services and direct access to Heathrow Airport via the Heathrow Express.



LAUDERDALE MANSIONS

APPROXIMATE GROSS INTERNAL FLOOR AREA: 1020 SQ FT - 94.79 SQ M

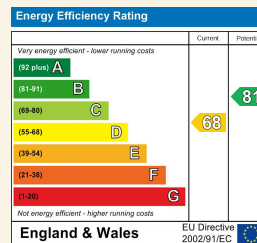


THIRD FLOOR

FOR ILLUSTRATION PURPOSES ONLY

THIS FLOOR PLAN SHOULD BE USED AS A GENERAL OUTLINE FOR GUIDANCE ONLY AND DOES NOT CONSTITUTE IN WHOLE OR IN PART AN OFFER OR CONTRACT. ANY INTENDING PURCHASER OR LESSEE SHOULD SATISFY THEMSELVES BY INSPECTION, SEARCHES, ENQUIRIES AND FULL SURVEY AS TO THE CORRECTNESS OF EACH STATEMENT. ANY AREAS, MEASUREMENTS OR DISTANCES QUOTED ARE APPROXIMATE AND SHOULD NOT BE USED TO VALUE A PROPERTY OR BE THE BASIS OF ANY SALE OR LET.

Council Tax Band F EPC Rating D



24 Bristol Gardens
 London
 W9 2JQ
 hello@draperlondon.com
 0203 143 1900