

est 1979

 Jeremy  
Leaf & Co.



Ashbourne Court, Ashbourne Close, Woodside Park

£1,800 Per Month

- Two double bedrooms
- Bathroom
- Balcony
- Available now
- Within approx. 400ft of tube station
- Spacious lounge
- EPC Rating C
- Council tax band D

863 High Road, London, N12 8PT  
020 8446 4295

property@jeremyleaf.co.uk  
<https://www.jeremyleaf.co.uk/>

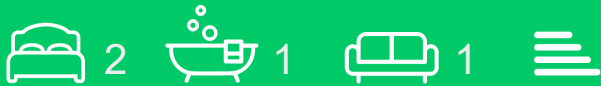
# Ashbourne Court, Ashbourne Close, Woodside Park, N12 8SA

Located approx. 400ft from Woodside Park Underground station, this two bedroom first floor flat benefits from a spacious lounge, two good sized double bedrooms and a balcony. The property is within 0.3 miles of North Finchley's shopping and transport amenities.

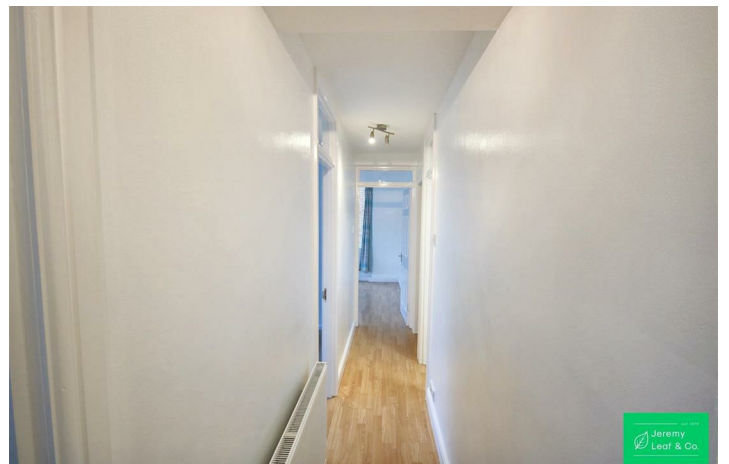
AVAILABLE NOW.

Unfurnished.

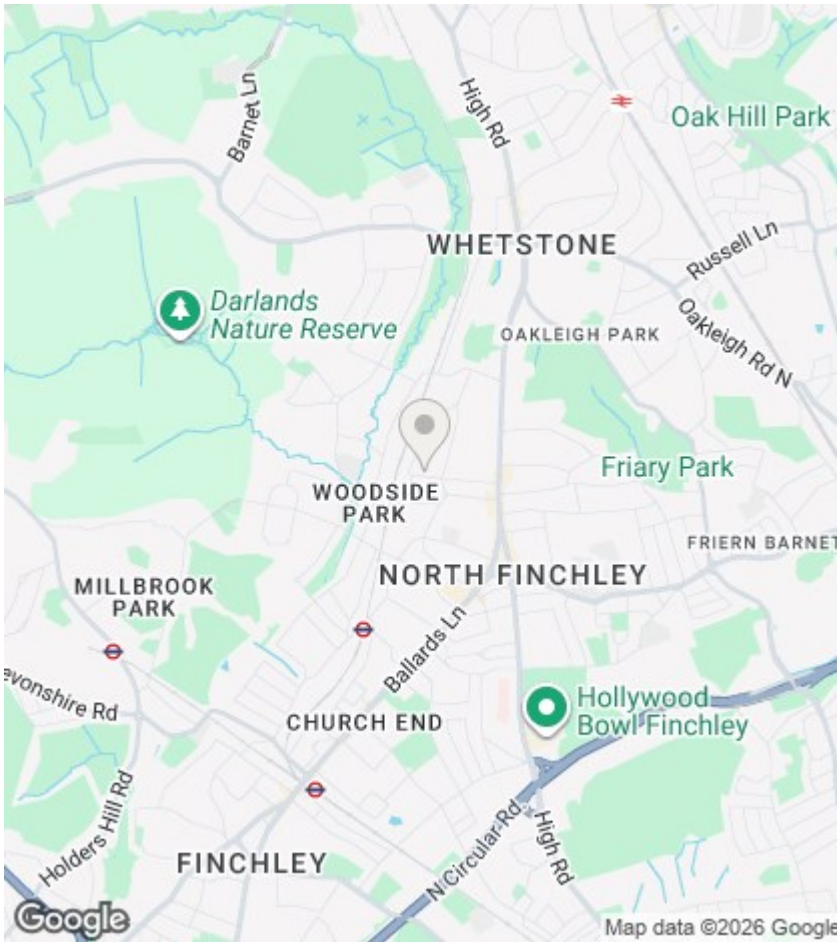
Council tax band D.



Council Tax Band: D







## Directions

## Viewings

Viewings by arrangement only. Call 020 8446 4295 to make an appointment.

## EPC Rating:

Energy Efficiency Rating		
	Current	Potential
Very energy efficient - lower running costs		
(92 plus) <b>A</b>		
(81-91) <b>B</b>		
(69-80) <b>C</b>		
(55-68) <b>D</b>		
(39-54) <b>E</b>		
(21-38) <b>F</b>		
(1-20) <b>G</b>		
Not energy efficient - higher running costs		
<b>England &amp; Wales</b>	EU Directive 2002/91/EC	