



Seely Road, SW17

£3,800 Per calendar month

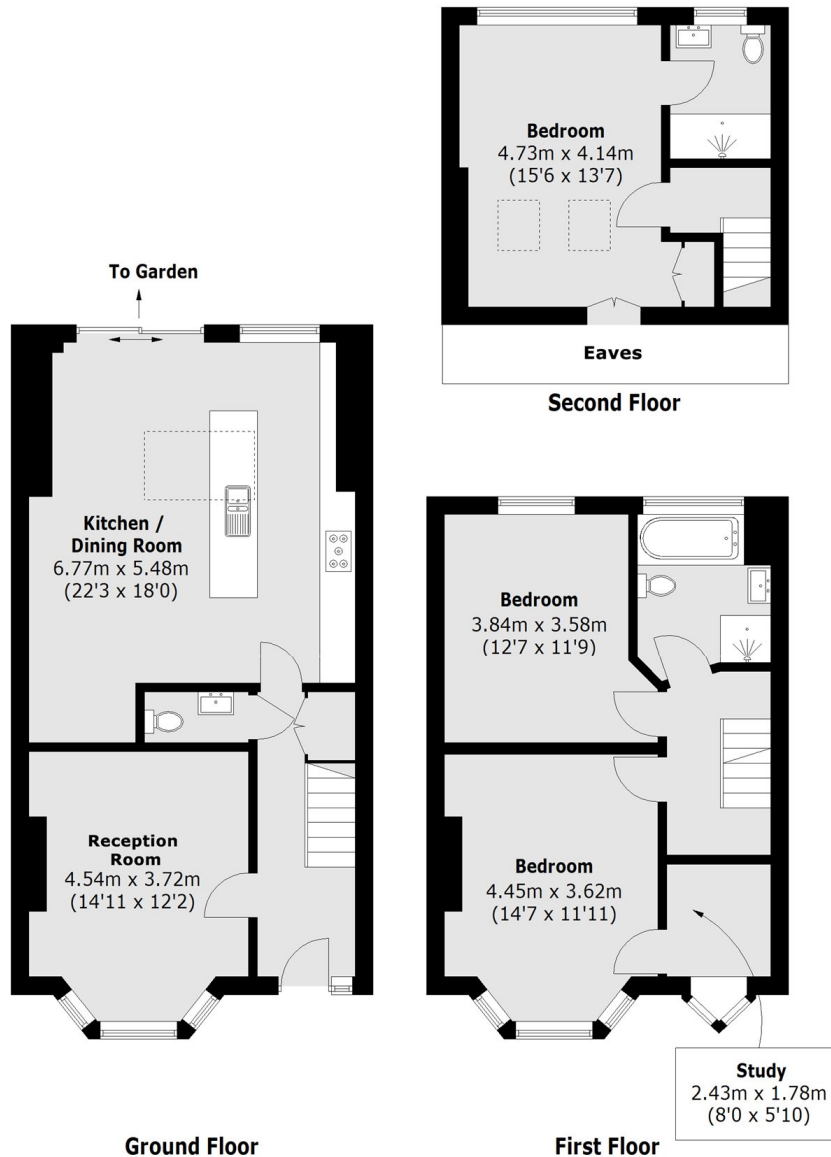
This four double bedroom has been neutrally decorated throughout. The property benefits from an open plan kitchen living area, two bathrooms and a private garden, making it perfect for professional sharers or a family.

Seely Road is nestled away on the ABC roads, located very close to the many shops, bars and restaurants of Tooting High Street and sits on the doorstep of Furzedown Village with Tooting Railway & Broadway Underground stations nearby.

Features

- Terraced House
- Four Double Bedrooms
- Two Bathrooms
- Open Plan Kitchen Living Room
- Private Garden
- Prime Location

Seely Road, London, SW17



Total area (approx.): 129.8 sq. m (1,397.1 sq. ft)