



Vol De Nuit

La Route Des Hetres



Vol De Nuit, La Route Des Hetres, St Peter, JE3 7DS

Situated in the popular rural parish of St Peter, this striking granite residence offers a rare opportunity to enjoy refined rural living in a home that balances timeless design with modern practicality.

Behind its traditional façade lies a thoughtfully designed interior, where natural light floods through generously sized windows and every detail has been finished with care. From the granite exterior to the elegant flooring and high-spec fixtures, the craftsmanship is evident throughout.

The ground floor features an elegant kitchen with beautiful granite work tops and high end built in appliances. The kitchen then flows seamlessly into a beautiful orangery looking out onto the garden. Across the hall you step into a spacious yet inviting living room, designed for both relaxation and entertaining. Bathed in natural light, this beautifully proportioned space features soft, neutral tones and modern finishes that create an elegant yet cozy, welcoming atmosphere. Large double doors stretch across one wall, seamlessly connecting the indoors into the garden.

Spanning three floors, the home provides versatile living with six spacious rooms. The first floor is home to four beautifully appointed bedrooms, including a luxurious principal suite featuring a private dressing room and elegant en-suite. The top floor adds two additional rooms—ideal as guest suites, a home office, or a quiet lounge—with one currently arranged as a cosy second sitting room.

Step outside to discover a neatly landscaped rear garden, complete with a sheltered patio perfect for relaxed outdoor dining. The property enjoys open countryside to the east, offering expansive rural views and a tranquil atmosphere year round.

Additional highlights include a double garage with internal access, a large utility room, and generous courtyard parking for multiple vehicles. If you're seeking a distinctive countryside home that combines space, style, and serenity—this property delivers on every level.

Close to many local amenities and on a fantastic bus/school bus route this property offers an excellent rural position while still being highly convenient.



Parish: St Peter

Qualification: Qualified

Tenure: Freehold

Price £2,050,000



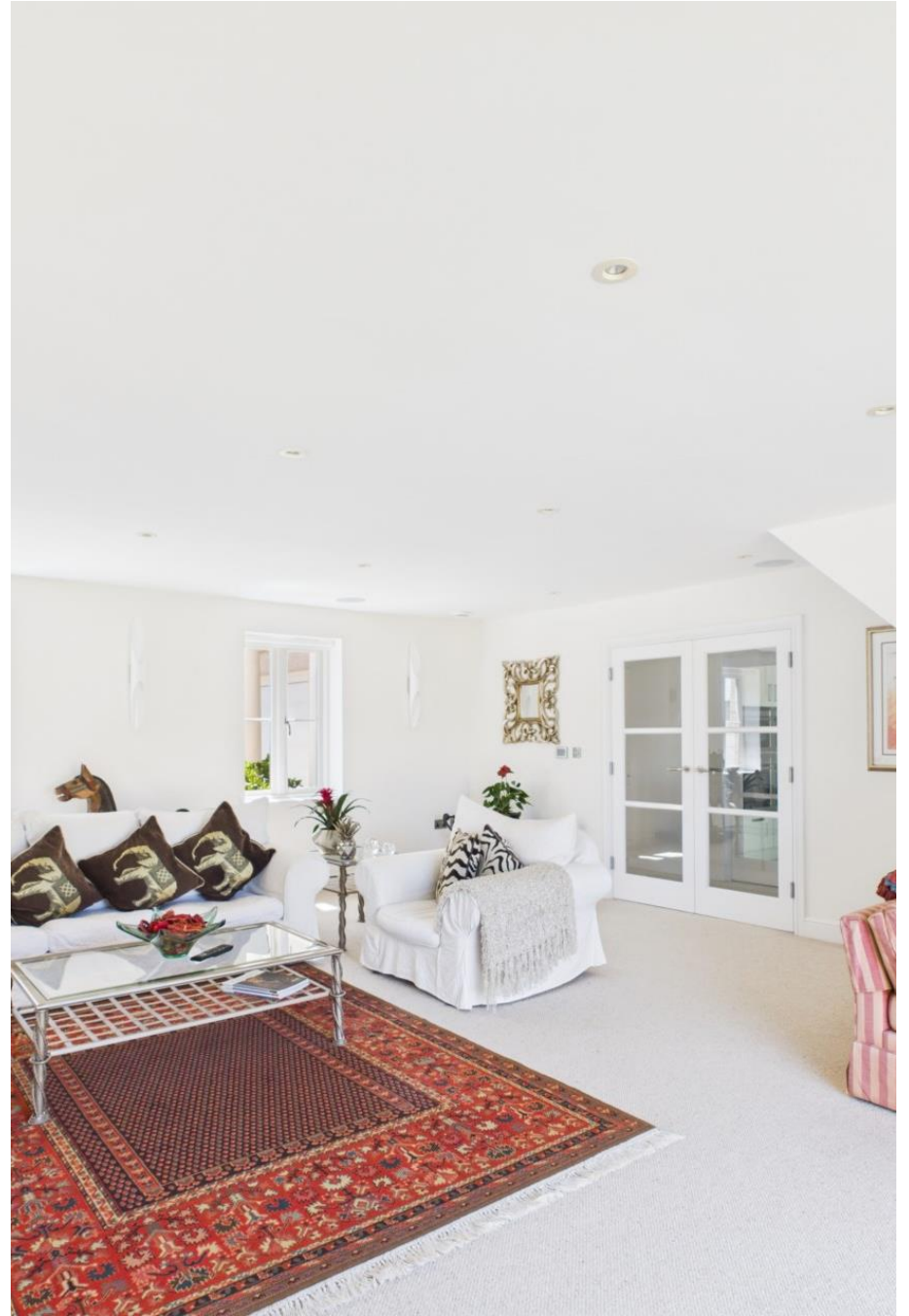
- Six bedroom granite country home
- Rural St Peters location
- Elegant kitchen and orangery
- Principle suite with bathroom and dressing room
- Sunny well manicured gardens
- Double garage and additional parking



















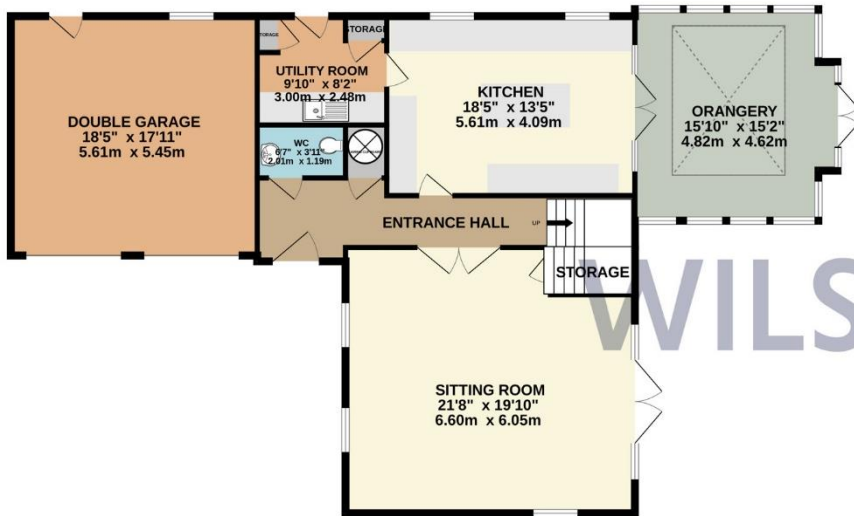




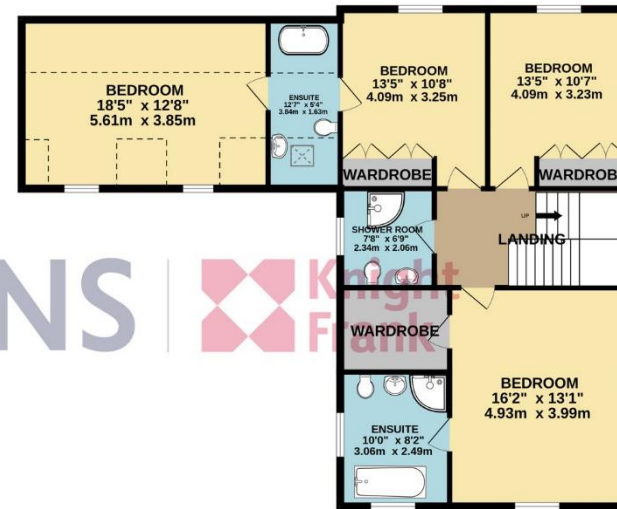




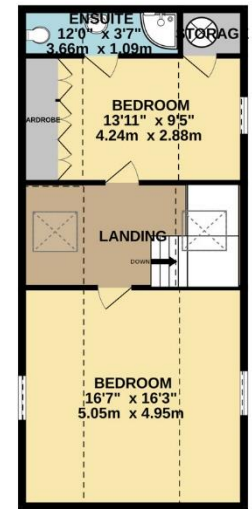
GROUND FLOOR
1481 sq.ft. (137.6 sq.m.) approx.



1ST FLOOR
1103 sq.ft. (102.5 sq.m.) approx.



2ND FLOOR
616 sq.ft. (57.2 sq.m.) approx.



TOTAL FLOOR AREA : 3477sq.ft. (323.0 sq.m.) approx.

Whilst every attempt has been made to ensure the accuracy of the floorplan contained here, measurements of doors, windows, rooms and any other items are approximate and no responsibility is taken for any error, omission or mis-statement. This plan is for illustrative purposes only and should be used as such by any prospective purchaser. The services, systems and appliances shown have not been tested and no guarantee as to their operability or efficiency can be given.
Made with Metropix ©2025

This plan is for layout guidance only. Not drawn to scale unless stated. Windows and door openings are approximate. Whilst every care is taken in the preparation of this plan, please check all dimensions, shapes and compass bearings before making any decisions reliant upon them.

+441534 877977

Knight Frank Jersey

37-39 Halkett Place, St. Helier, Jersey JE2 4WG

knightfrank.je

Your partners in property

1. Particulars: These particulars are not an offer or contract, nor part of one. You should not rely on statements given by Knight Frank Jersey in the particulars, by word of mouth or in writing (“information”) as being factually accurate about the property, its condition or its value. Neither Knight Frank Jersey nor any joint agent has any authority to make any representations about the property, and accordingly any information given is entirely without responsibility on the part of Knight Frank Jersey. 2. Material Information: Please note that the material information is provided to Knight Frank Jersey by third parties and is provided here as a guide only. While Knight Frank Jersey has taken steps to verify this information, we advise you to confirm the details of any such material information prior to any offer being submitted. If we are informed of changes to this information by the seller or another third party, we will use reasonable endeavours to update this as soon as practical. 3. Photos, Videos etc: The photographs, property videos and virtual viewings etc. show only certain parts of the property as they appeared at the time they were taken. Areas, measurements and distances given are approximate only. 4. Regulations etc: Any reference to alterations to, or use of, any part of the property does not mean that any necessary planning, building regulations or other consent has been obtained. A buyer must find out by inspection or in other ways that these matters have been properly dealt with and that all information is correct. 5. Fixtures and fittings: A list of the fitted carpets, curtains, light fittings and other items fixed to the property which are included in the sale (or may be available by separate negotiation) will be provided by the Seller’s Lawyer. Particulars dated 04/09/2025. All information is correct at the time of going to print.

