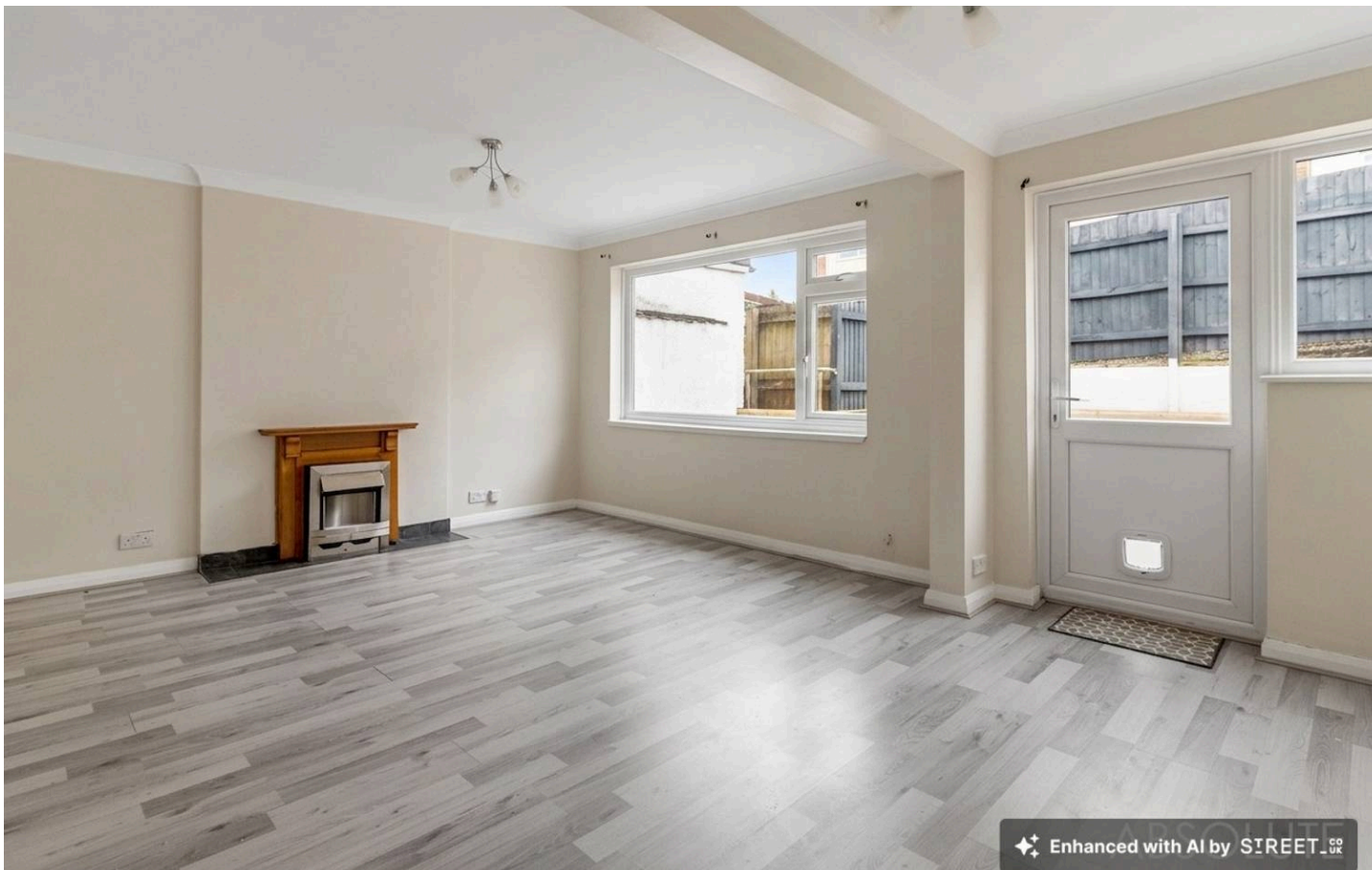




14, Braeside Road, Torquay - TQ2 8QR
£190,000

 **ABSOLUTE**
SALES & LETTINGS





14, Braeside Road

Torquay, Torquay

Spacious three double bedroom home with garage, driveway and generous living space throughout. Recently refreshed and move in ready with bright accommodation and low maintenance garden.

Council Tax band: C

Tenure: Freehold

EPC Energy Efficiency Rating: D

EPC Environmental Impact Rating: D

- Spacious three bedroom mid terrace home
- Three genuine double bedrooms
- No onward chain
- Large bright lounge dining room with feature fireplace
- Spacious kitchen breakfast room with range cooker
- Integral garage and driveway parking
- Large entrance vestibule
- Low maintenance rear garden with raised deck
- Excellent storage including laundry and boiler cupboards



14, Braeside Road

Torquay, Torquay

Braeside Road occupies a convenient position within the Barton area of Torquay, well placed for a wide range of everyday amenities, schools and transport links. Nearby are local convenience shops, supermarkets and Barton Precinct, while larger shopping facilities can be found at The Willows retail area with Marks & Spencer, Sainsbury's and additional national retailers all within easy reach. The property is well positioned for families with several local primary and secondary schools nearby, along with parks and recreational spaces. Cockington Country Park, Torre Abbey Meadows and the South West Coast Path are all easily accessible, offering excellent outdoor walks and leisure opportunities across Torbay's beautiful coastline. Torquay town centre, the harbour and seafront are also within easy reach, offering a superb selection of restaurants, cafés and waterfront attractions.

Absolute Sales & Lettings

Absolute Sales & Lettings Ltd, 13 Ilsham Road - TQ1 2JG

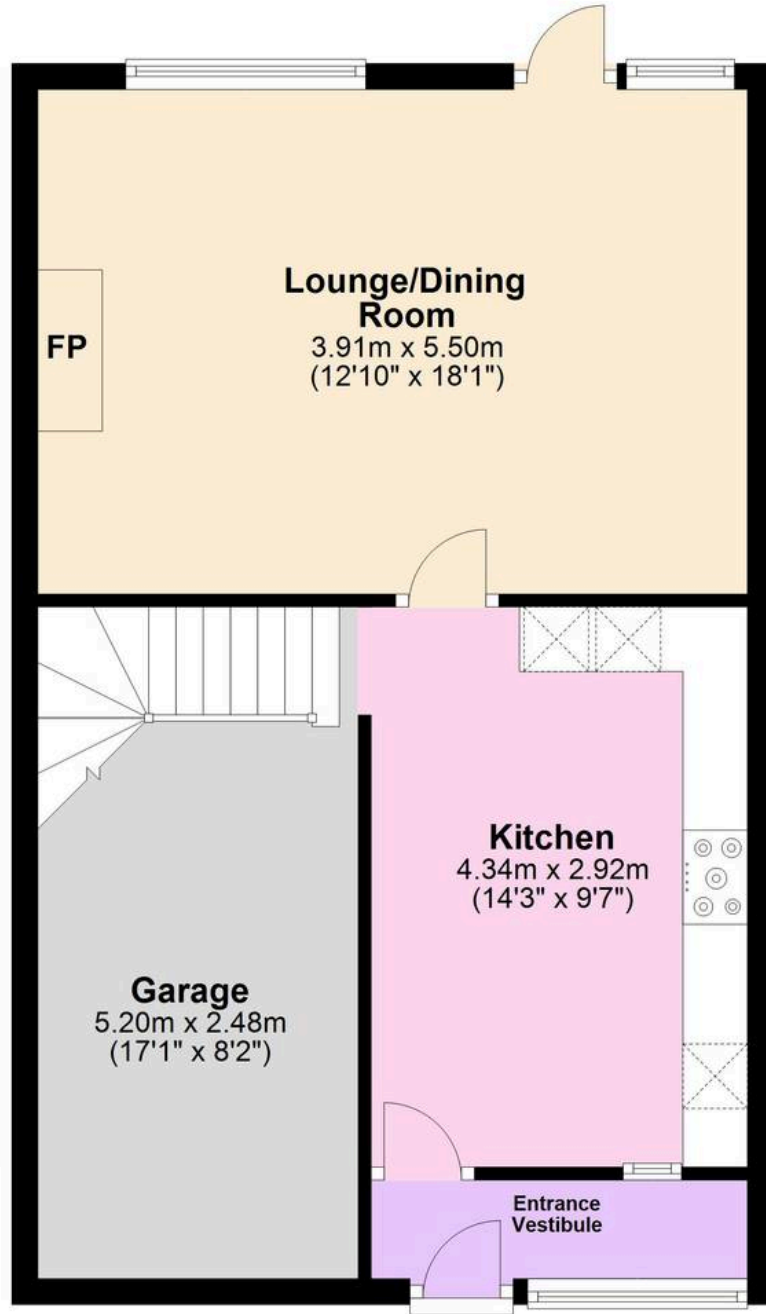
01803 214214

torquay@movewithabsolute.co.uk

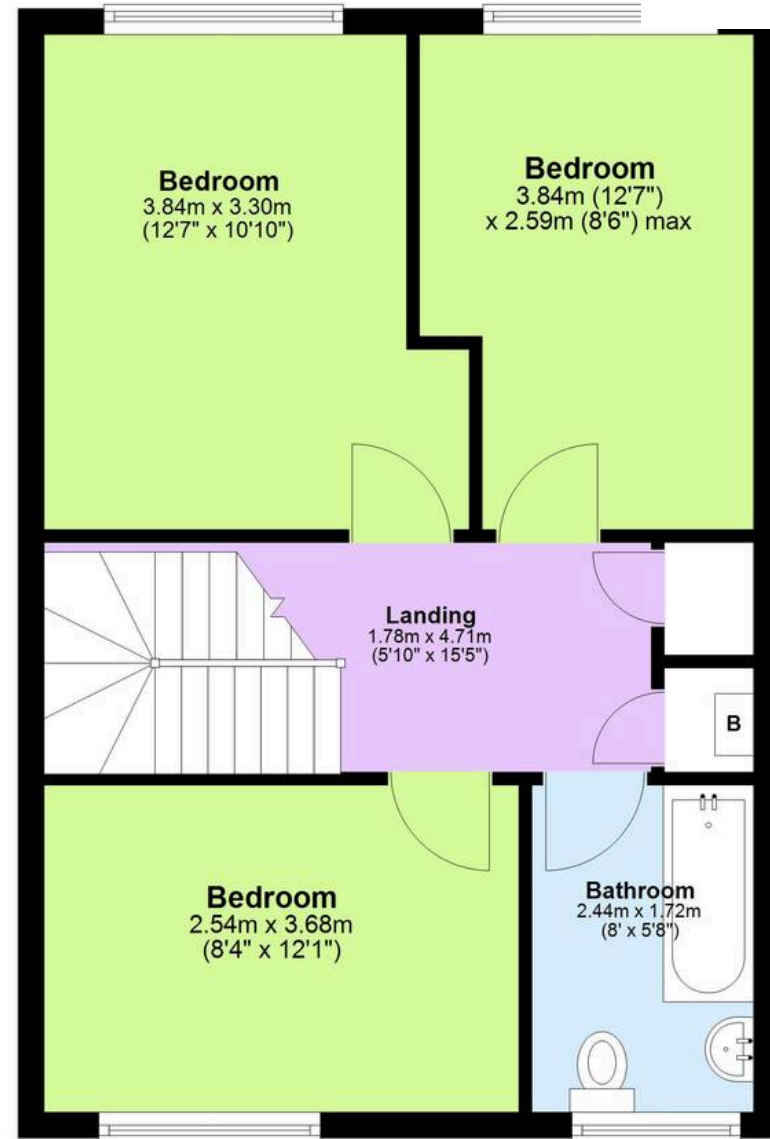
movewithabsolute.co.uk/



Ground Floor
Approx. 50.7 sq. metres (545.5 sq. feet)



First Floor
Approx. 45.8 sq. metres (492.5 sq. feet)



Total area: approx. 96.4 sq. metres (1038.0 sq. feet)

Approx.
Plan produced using PlanUp.