





**Towers  
Wills**

Town & Country

**24 Lavers Oak, Martock, Somerset, TA12 6HG**

**£525,000**

 01935 577 032 | 01460 298 530 |  [info@towerswills.co.uk](mailto:info@towerswills.co.uk)



Towers Wills welcome to the market a truly exceptional extended four-bedroom detached family home, occupying a quiet position within the highly desirable village of Martock. Beautifully renovated throughout to an impeccable standard, this stunning home is perfectly designed for modern family living, featuring an incredible large open-plan kitchen, dining and family room with bi-fold doors opening onto the landscaped rear garden. Combining stylish contemporary living with generous accommodation, countryside views and a superb village location, this is a home that simply must be viewed.

**\*Extended Detached Family Home**

**\*Desirable Village of Martock**

**\*Renovated Throughout**

**\*Four Bedrooms**

**\*Open Plan Kitchen / Dining / Family Room**

**\*Landscaped Rear Garden**

**\*Countryside Views**

**\*Early Viewing Highly Recommended**



Score	Energy rating	Current	Potential
92+	A		
81-91	B		82 B
69-80	C		
55-68	D	60 D	
39-54	E		
21-38	F		
1-20	G		



## **Accommodation:**

### **Lavers Oak, Martock, Somerset**

Set within a peaceful position on the edge of the ever-popular village of Martock, this exceptional four-bedroom detached family home has been comprehensively renovated and thoughtfully extended to create an outstanding home perfectly suited to modern family life. Finished to an impeccable standard throughout, every room has been designed with both style and practicality in mind, resulting in a property ready to move straight into and enjoy.

From the moment you step inside, the quality of finish is immediately apparent. However, it is the spectacular open-plan kitchen, dining and family space that truly steals the show. This remarkable room forms the heart of the home – an incredible space where everyday family life and entertaining come together effortlessly. Whether hosting celebrations, enjoying relaxed weekend breakfasts or creating treasured memories with family and friends, this stunning living environment caters for every occasion.

The beautifully appointed kitchen features an extensive range of contemporary wall, base and drawer units complemented by elegant white quartz work surfaces and a central breakfast bar. Integrated appliances include twin electric ovens, an induction hob with extractor, dishwasher, wine cooler and ample storage, creating a kitchen as practical as it is stylish. The dining area comfortably accommodates a large family table before flowing seamlessly into an impressive family seating area, which in turn opens into a dedicated playroom, providing exceptional flexibility for growing families.



Four impressive skylights flood the entire space with natural light, whilst expansive bi-folding doors open directly onto the landscaped rear garden, effortlessly blending indoor and outdoor living during the warmer months.

For quieter evenings, a separate living room offers the perfect retreat to relax in comfort and enjoy cosy nights in. The ground floor also benefits from a cloakroom/WC, useful lean-to providing, internal access to the integral garage and excellent everyday practicality.

The first floor continues to impress, offering four generous double bedrooms, all beautifully presented. Serving the bedrooms is a luxurious family bathroom, thoughtfully designed with a bath, separate double shower enclosure, vanity wash hand basin with storage beneath and WC, creating a stylish space to unwind.



#### **Outside:**

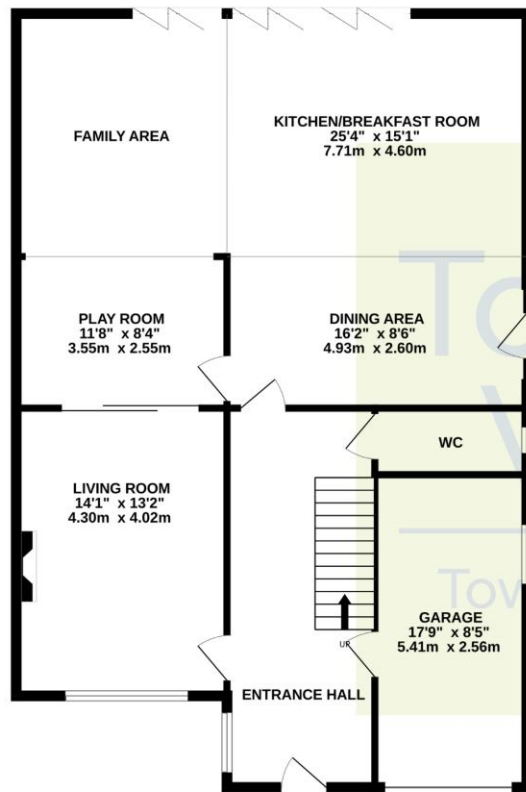
Outside, the rear garden has been professionally landscaped to provide an attractive and private setting. A substantial paved terrace offers the perfect space for al fresco dining and summer entertaining, whilst the remainder is predominantly laid to lawn with well-stocked borders filled with a variety of mature plants and shrubs. Beyond the garden, attractive views stretch towards open countryside, providing a wonderful backdrop to this exceptional family home. To the front, a generous driveway provides ample parking and leads to the integral garage.

#### **Location:**

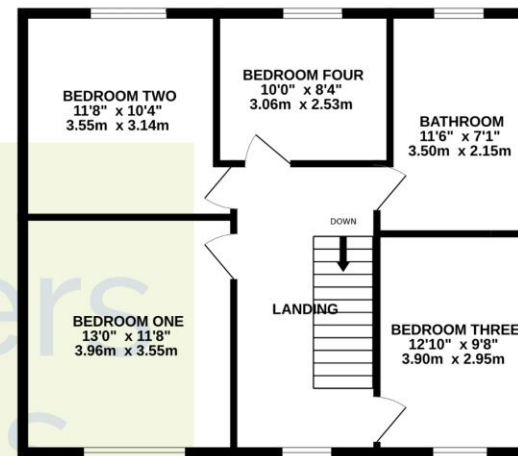
Martock is one of Somerset's most sought-after villages, offering an excellent blend of rural charm and everyday convenience. The village boasts a wide range of amenities including highly regarded primary schooling, independent shops, cafés, traditional pubs, a supermarket, pharmacy, medical centre and a variety of local businesses, creating a thriving community atmosphere. Beautiful countryside walks are right on the doorstep, while the nearby A303 provides excellent transport links to Yeovil, Taunton, Exeter and London, making Martock an ideal location for both families and commuters alike.



## GROUND FLOOR



## 1ST FLOOR



Whilst every attempt has been made to ensure the accuracy of the floorplan contained here, measurements of doors, windows, rooms and any other items are approximate and no responsibility is taken for any error, omission or mis-statement. This plan is for illustrative purposes only and should be used as such by any prospective purchaser. The services, systems and appliances shown have not been tested and no guarantee as to their operability or efficiency can be given.  
Made with Metropix ©2026

T: 01935 577032 E: [info@towerswills.co.uk](mailto:info@towerswills.co.uk)

The White House 114 Hendford Hill, Yeovil, Somerset BA20 2RF

[www.towerswills.co.uk](http://www.towerswills.co.uk)

Please Note No tests have been undertaken of any of the services and any intending purchasers should satisfy themselves in this regard. Towers Wills Ltd for themselves and for the vendor of this property whose agents they are, give notice that, (i) these particulars do not constitute any part of an offer or contract, (ii) all statements contained within these particulars are made without responsibility on the part of Towers Wills or the vendor, (iii) whilst made in good faith, none of the statements contained within these particulars are to be relied upon as a statement of representation or fact, (iv) any intending purchaser must satisfy him/herself by inspection or otherwise as to the correctness of each of the statements contained within these particulars, (v) the vendor does not make or give either Towers Wills or any person in their employment any authority to make or give representation or warranty whatsoever in relation to this property. Photographs / Floor Plans Photographs are reproduced for general information and it must not be inferred that any item is included for sale with this property. Please note floor plans are not to scale and are for identification purposes only. The photographs used in these particulars may have been taken with the use of a wide angle lens. If you have any queries as to the size of the accommodation or plot, please address these with the agent prior to making an appointment to view.