



Keith  
Ashton

Headley Chase, Warley  
Brentwood





## 28 HEADLEY CHASE

Warley Brentwood, CM14 5BN

Situated in the highly desirable 'Old Hartswood' area, this detached family home in need of some modernisation, boasts four bedrooms, two versatile reception rooms and a detached garage. Offered with no onward chain, the property enjoys a prime location within walking distance of Brentwood train station, where the Elizabeth line provides seamless connections to London and beyond. Surrounded by excellent local schools and the expansive King George's playing fields, this spacious residence is ideal for families and commuters alike, combining convenience with an enviable setting.

Guide Price £725,000

- DESIRABLE OLD HARTSWOOD AREA
- FOUR BEDROOM DETACHED HOME
- LOUNGE AND SEPARATE DINING ROOM
- ENSUITE TO PRINCIPAL BEDROOM
- WALKING DISTANCE OF BRENTWOOD TRAIN STATION
- EXCELLENT SCHOOLING WITHIN EASY REACH
- DETACHED GARAGE
- WITHIN A MILE OF THE HIGH STREET





## Description

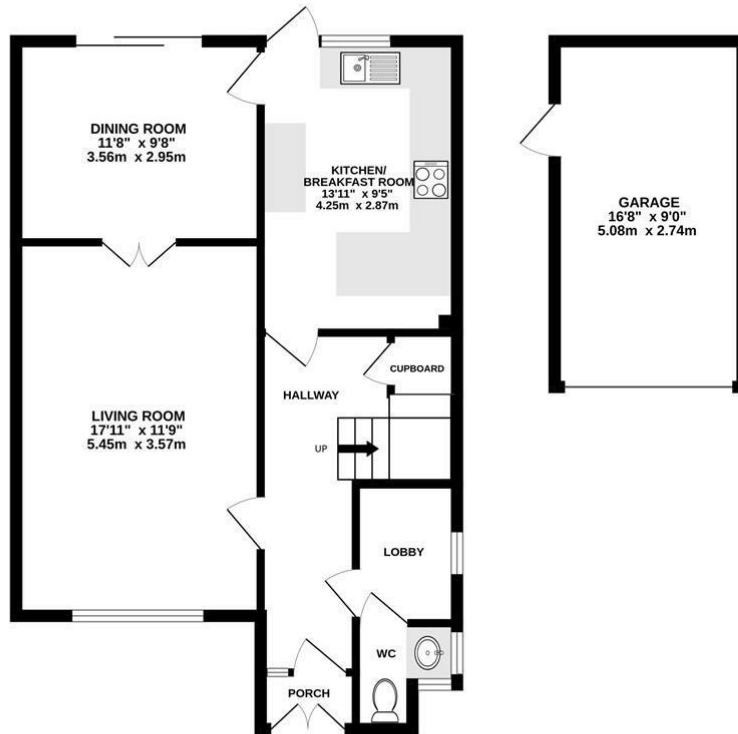
The porch opens into a welcoming hallway, which includes a lobby area and a convenient ground-floor cloakroom. The bright and spacious living room features double doors leading seamlessly into the dining room, where sliding doors provide views and access to the rear garden. The generously sized kitchen, accessible from both the hallway and dining room, is equipped with eye and base level units, a practical breakfast bar, and a door to the rear garden.

Ascending to the first floor, you'll find four well-proportioned bedrooms, including a principal bedroom with its own ensuite shower room. A family bathroom is thoughtfully positioned to serve the remaining bedrooms.

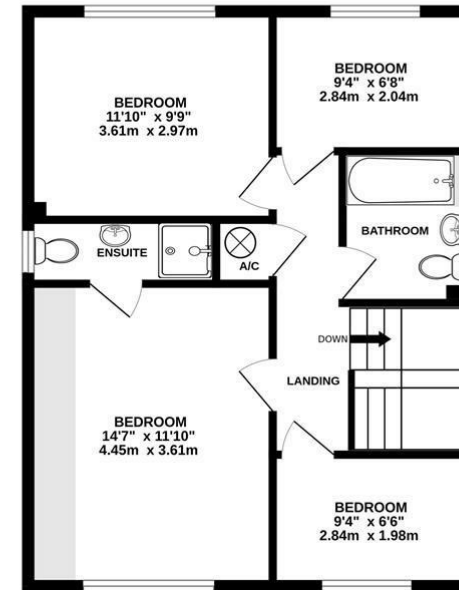
Outside, the property benefits from a detached garage at the front, while the rear garden offers a blend of functionality and tranquillity, beginning with a paved patio and extending to a lawn bordered by mature shrubs and trees



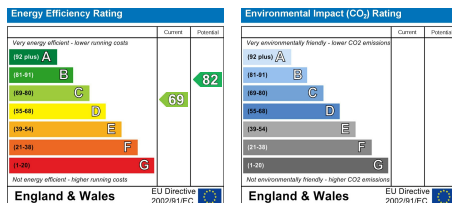
GROUND FLOOR  
775 sq.ft. (72.0 sq.m.) approx.



1ST FLOOR  
578 sq.ft. (53.7 sq.m.) approx.



TOTAL FLOOR AREA : 1353 sq.ft. (125.7 sq.m.) approx.  
Measurements are approximate. Not to scale. Illustrative purposes only  
Made with Metropix ©2024



### SERVICES:

Local Authority: Brentwood  
Council tax band: F  
Post code: CM14 5BN

### VIEWING:

Strictly by prior arrangement with Keith Ashton Estate Agents

### OPENING HOURS:

Monday to Friday: 8.45AM - 6.30PM | Saturdays: 9AM - 5.30PM | Sundays: 10AM - 2PM

**MORTGAGE INFORMATION:** We offer the additional facility of an in-house Independent Financial Adviser who will access all mortgage lenders with the purpose of providing you with the benefit of choice. For quotations or comparables please call 01277 260858 or visit our interactive website at [www.mortgagebusiness.net](http://www.mortgagebusiness.net)



We the Agent have not tested any apparatus, fittings or services for this property. The plot size is intended merely as a guide and has not been officially measured or verified by the Agent. Photographs are for illustration only and may depict items which are not for sale or included in the sale of the property. As part of the service we offer we may recommend ancillary services to you which we believe may help you with your property transaction. We wish to make you aware, that should you decide to use these services we will receive a referral fee. For full and detailed information please visit 'terms and conditions' on our website [www.keithashton.co.uk](http://www.keithashton.co.uk)

Brentwood  
Tel. 01277 260858

Village Office  
Tel. 01277 375757

Lettings Office  
Tel. 01277 202200

Explore more @ [www.keithashton.co.uk](http://www.keithashton.co.uk)

