



1 Longmead Close Taunton TA1 4SZ

Offers in Excess of £300,000

robert
cooney



A well presented 2 double bedroomed detached bungalow situated in a highly favoured location close to local amenities, within walking distance of Musgrove Park Hospital with good sized enclosed garden to the rear, garage and driveway parking. No onward chain.





Features

- Entrance Hall
- Living Room
- Fitted Kitchen with door to garden
- Master Bedroom with wardrobes
- Further double Bedroom with wardrobe
- Family Bathroom
- Enclosed established garden to rear
- Garage and driveway parking
- Gas central heating
- Double glazing
- Air conditioning in Master Bedroom and Living Room
- No onward chain
- Council tax band D
- What3words:
///rental.door.trains

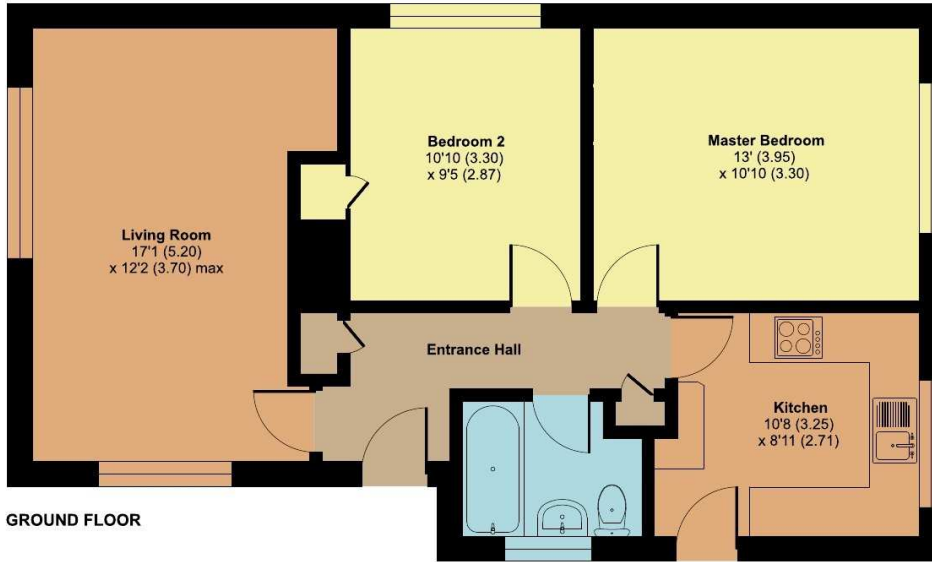
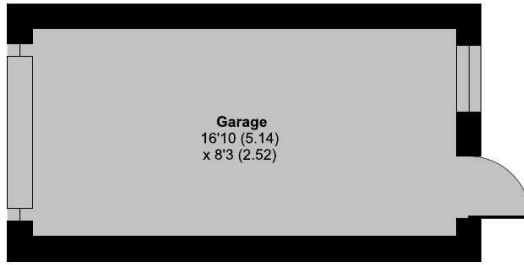
1 Longmead Close, Taunton, TA1 4SZ

Approximate Area = 662 sq ft / 61.5 sq m

Garage = 139 sq ft / 12.9 sq m

Total = 801 sq ft / 74.4 sq m

For identification only - Not to scale



GROUND FLOOR



Floor plan produced in accordance with RICS Property Measurement 2nd Edition, incorporating International Property Measurement Standards (IPMS2 Residential). © nichcom 2026. Produced for Robert Cooney. REF: 1456366



Viewing strictly through the selling agents:

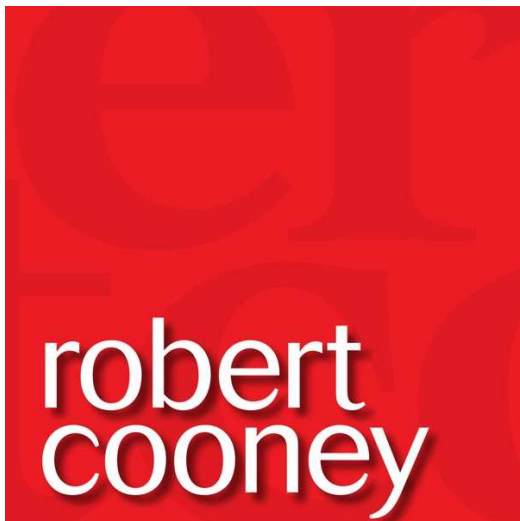
Robert Cooney

Corporation Street, Taunton,
Somerset TA1 4AW

Telephone 01823 230 230

taunton@robertcooney.co.uk

www.robertcooney.co.uk



For clarification, we wish to inform prospective purchasers that: these particulars are set out as a general outline only for the guidance of intended purchasers, and do not constitute, nor constitute part of, an offer or contract; all descriptions, dimensions, references to condition and necessary permission for use and occupation, and other details, are given without responsibility and any intending purchasers should not rely on them as statements or representation of fact, but must satisfy themselves by inspection or otherwise as to the correctness of each of them; no person in the employment of Robert Cooney has any authority to make or give any representation or warranty whatever in relation to this property; we have not carried out a detailed survey nor tested the services, appliances and specific fittings.