


### Directions

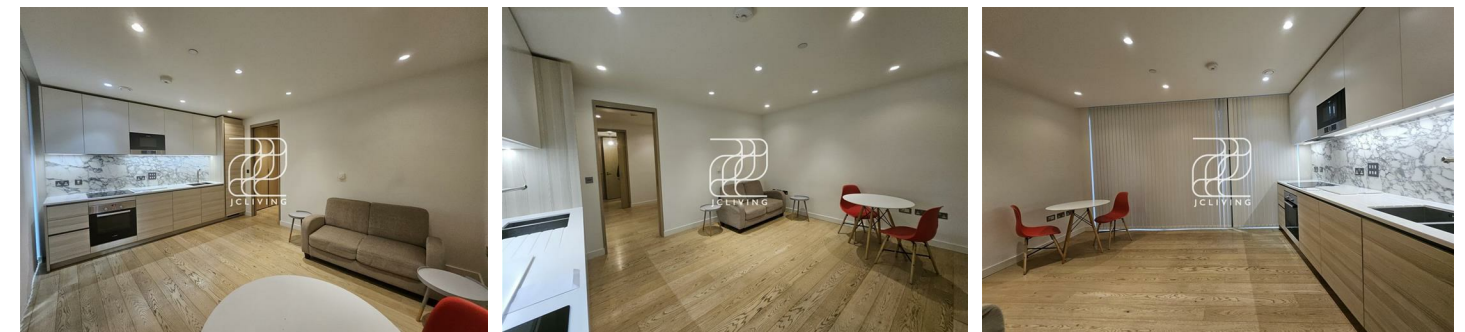
### Viewings

Viewings by arrangement only. Call 02033696888 to make an appointment.

### EPC Rating

B

Energy Efficiency Rating		Current	Potential
Very energy efficient - lower running costs			
(92 plus) A			
(81-91) B		83	
(69-80) C			
(55-68) D			
(39-54) E			
(21-38) F			
(1-20) G			
Not energy efficient - higher running costs			
England & Wales		EU Directive 2002/91/EC	



## KZ67 Flat 9, The Lighterman Building 1 Pilot Walk, London, SE10 0UN

£500 Per Week

- 434 square ft
- Excellent transport links
- Close to Central Park and the Greenwich Peninsula Ecology Park
- On-site childrens nursery
- Residents prayer rooms
- 24 hour concierge
- Close to the O2 arena
- Residents gym
- Residents event space
- Council tax band C

# The Lighterman Building 1 Pilot Walk, London SE10

QINI

\*\*\* Please quote reference JC24091602 when contacting the agency. \*\*\*

Nestled in the vibrant area of Greenwich, London, this modern flat offers a perfect blend of comfort and convenience. The property features a well-appointed bedroom, a stylish bathroom, and a welcoming reception room, making it an ideal space for individuals or couples seeking a contemporary urban lifestyle.

This flat boasts excellent transport links, including the IFS Cloud cable cars, ensuring easy access to the wider city. Residents will appreciate the proximity to a variety of local dining, shopping, and entertainment options, with the renowned O2 Arena and the Greenwich Peninsula Golf Range just a stone's throw away.

For those who enjoy the outdoors, the property is surrounded by lush greenery, including Central Park and the Greenwich Peninsula Ecology Park, providing a serene escape from the hustle and bustle of city life.

The flat also offers a range of exceptional amenities, including a 24-hour concierge service, a residents' gym, an on-site children's nursery, and dedicated event spaces for social gatherings. Additionally, prayer rooms are available for residents' convenience.

This property presents a unique opportunity to experience modern living in one of London's most sought-after locations, combining luxury, accessibility, and a vibrant community atmosphere.



Council Tax Band: C

