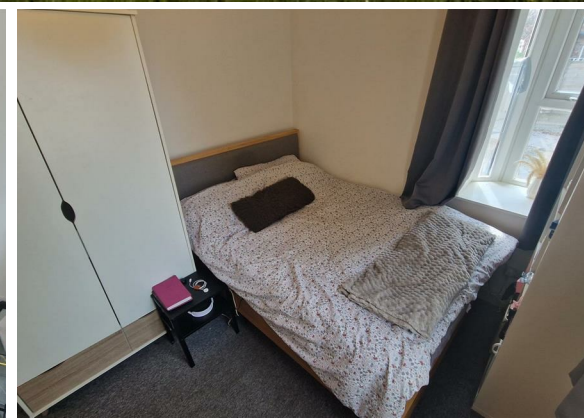


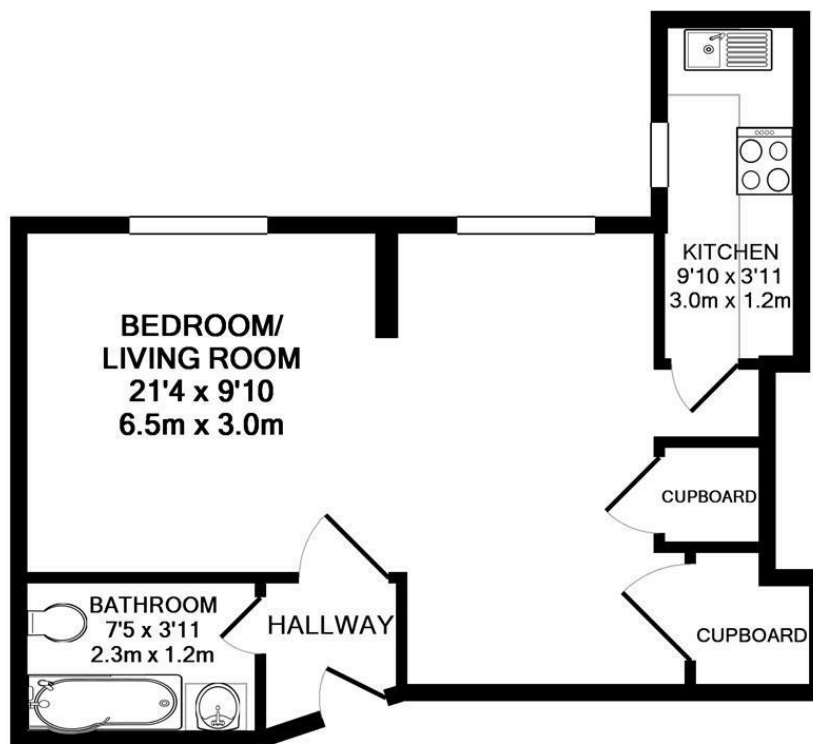


**0 Bed
House
located in West
Didsbury**

£925 Per Month



DIRECTIONS



FLAT 2, 72 BURTON ROAD
TOTAL APPROX. FLOOR AREA 330 SQ.FT. (30.7 SQ.M.)

Whilst every attempt has been made to ensure the accuracy of the floor plan contained here, measurements of doors, windows, rooms and any other items are approximate and no responsibility is taken for any error, omission, or mis-statement. This plan is for illustrative purposes only and should be used as such by any prospective purchaser. The services, systems and appliances shown have not been tested and no guarantee as to their operability or efficiency can be given

Made with Metropix ©2014

Energy Efficiency Rating		
	Current	Potential
Very energy efficient - lower running costs		
(92 plus) A		
(81-91) B		
(69-80) C	71	76
(55-68) D		
(39-54) E		
(21-38) F		
(1-20) G		
Not energy efficient - higher running costs		
England & Wales	EU Directive 2002/91/EC	

CONTACT

31 Barlow Moor Road
 Didsbury
 Manchester
 M20 6TW

E: office@stantonproperties.co.uk
 T: 01614345307

