







6 Valley Crescent

Spital • Chesterfield • S41 0EY

Guide Price £175,000 to £180,000

A three-bedroom semi-detached house situated in the popular area of Spital. The property is conveniently positioned close to a range of everyday essentials, including supermarkets, pubs, cafés, and other amenities. Well-regarded schools are also located nearby, making it ideal for families. Chesterfield town centre is just a short distance away, offering a wider selection of facilities, while nearby green spaces include Queen's Park and the Peak District, which is within easy reach. The property benefits from excellent transport links, including access to the railway station, M1 motorway, and regular bus routes. It offers an excellent opportunity for buyers looking to complete and personalise a home to their own taste, making it well suited to couples and families. Upon entering the property, you are welcomed into a small hallway, providing access to the staircase and the living room. The living room is a spacious and inviting area, featuring a bay window and a log burner. This space then opens into the kitchen diner, creating a flexible and sociable layout. The U-shaped kitchen is partly fitted with shaker-style units and integrated appliances, along with a breakfast bar, and offers excellent scope to be completed to the buyer's preferred standard. There is also space for a dining table. An internal door provides access to storage, while double doors lead through to a rear lean-to/conservatory, also ready for completion, which in turn opens out to the rear garden. To the first floor are three bedrooms and a shower room. Bedroom one is a spacious double positioned at the front of the property, featuring a bay window and fitted wardrobes. Bedroom two, overlooking the rear garden, is another double and also benefits from fitted wardrobes. Bedroom three is a front-facing single room, ideal as a bedroom, study, or nursery. The shower room is modern and fully tiled, fitted with a four-piece suite comprising a shower cubicle, wash basin, WC, and bidet. Externally, the rear garden is enclosed and well presented, offering a low-maintenance layout. It begins with a patio area suitable for seating, with steps leading up to a decked section and, to the rear, a small lawn. To the front of the property, there is a driveway providing off-road parking for multiple vehicles and access to an attached single garage, which also benefits from a rear access door from the garden.





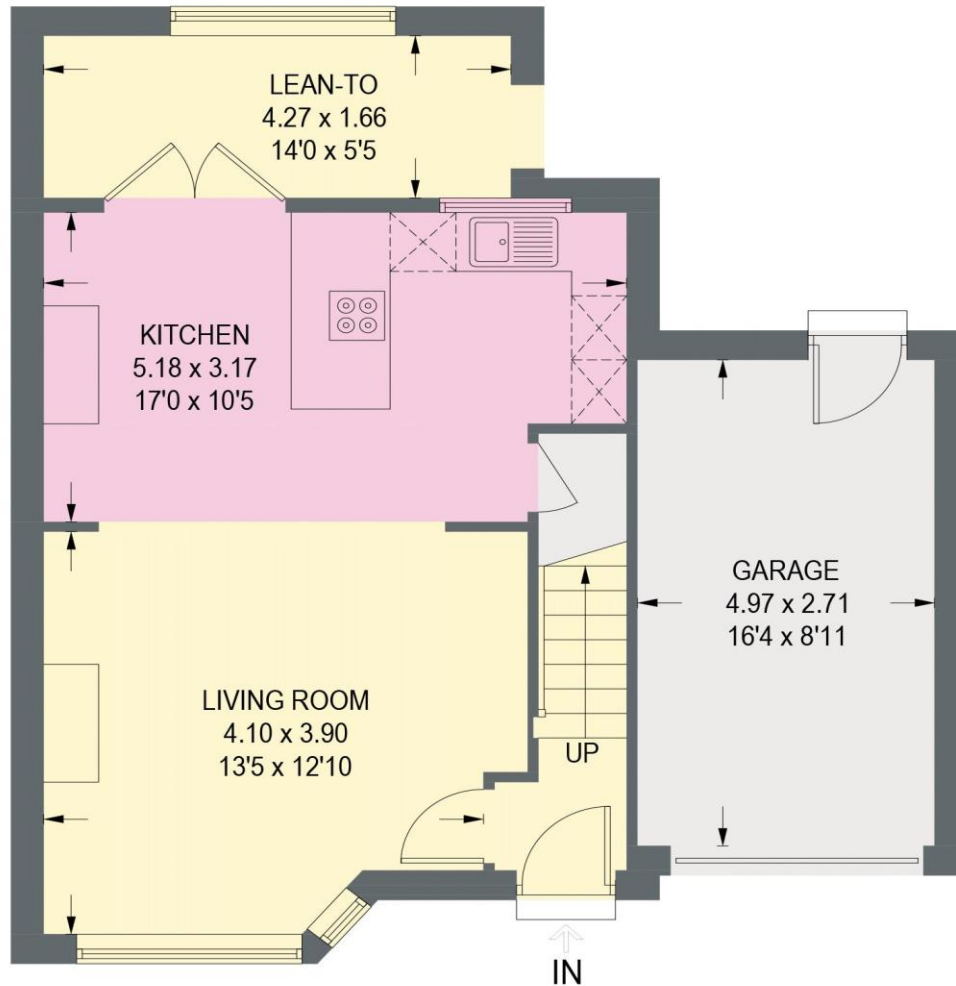
- Three Bedroom Semi Detached House
- Ready to Personalise & Make Your Own
- Popular Area & Great Transport Links
- Spacious Bay Windowed Living Room & Log Burner
- Open Plan Kitchen Diner & Rear Lean To
- Three Well Proportioned Bedrooms
- Modern Four Piece Suite Shower Room
- Easy to Maintain Rear Garden
- Driveway Parking & Attached Single Garage
- Council Tax Band B/EPC Rating D



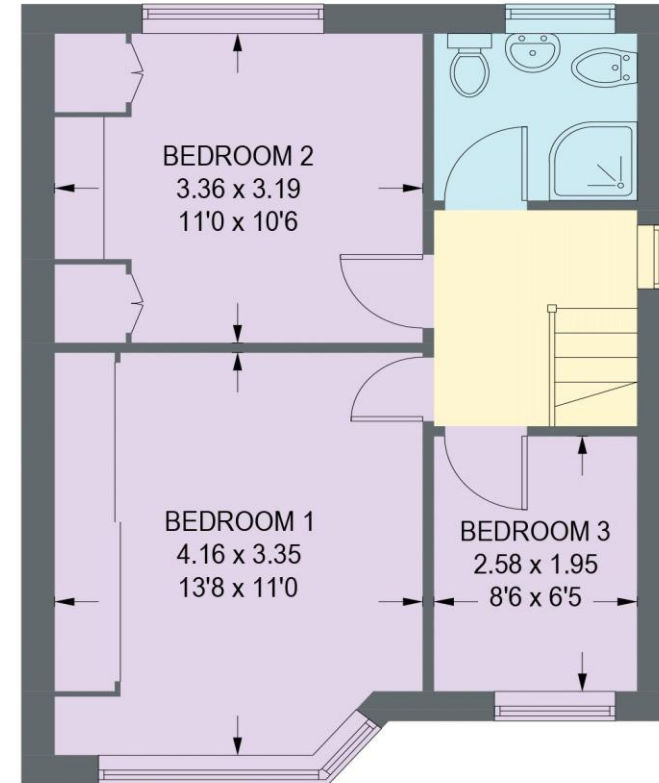


6 VALLEY CRESCENT

APPROXIMATE GROSS INTERNAL AREA = 96.5 SQ M / 1038.4 SQ FT



GROUND FLOOR (INCLUDING GARAGE)
58.0 SQ M / 624.6 SQ FT



FIRST FLOOR = 38.4 SQ M / 413.8 SQ FT

Illustration for identification purposes only, measurements are approximate, not to scale. (ID1307889)

