



37 Brentwood Close

Holywell, Whitley Bay NE25 0PD

- Mid Link House
- Good Location
- Dining Kitchen
- Bathroom with separate W.C
- Driveway
- Freehold
- Open Plan Lounge
- 3 Bedooms
- Gardens
- Ideal for First Time Buyers

£167,500





Situated in the popular area of Holywell, this delightful mid-link house on Brentwood Close presents an excellent opportunity for first-time buyers and smaller families. The property is conveniently pedestrianised at the front, while remaining close to local amenities.

As you enter, you are welcomed by a porch that leads into an open-plan living room, creating a warm and inviting space with stairs to first floor, re-fitted dining kitchen, which boasts a good range of wall and floor units, complemented by contrasting worktops incorporating a stainless steel sink unit with a mixer tap, space for a cooker, and room for a dining table, making it perfect for family meals and gatherings. French doors opening to the rear garden.

The property comprises three bedrooms and one bathroom comprising a panelled bath with mains shower over and screen, pedestal wash basin and separate w.c.

Its location is particularly advantageous, with easy access to local shops, schools, and bus links. Additionally, Seaton Delaval Train Station is nearby, offering direct connections to Newcastle City Centre.

Viewing is recommended to appreciate the accommodation on offer.

Entrance Porch

Lounge

17'9 inc staircase x 14'5

Dining Kitchen

17'2 x 8'9

First Floor Landing

Bedroom One

12'4 x 8'3

Bedroom Two

9'1 x 6'3

Bedroom Three

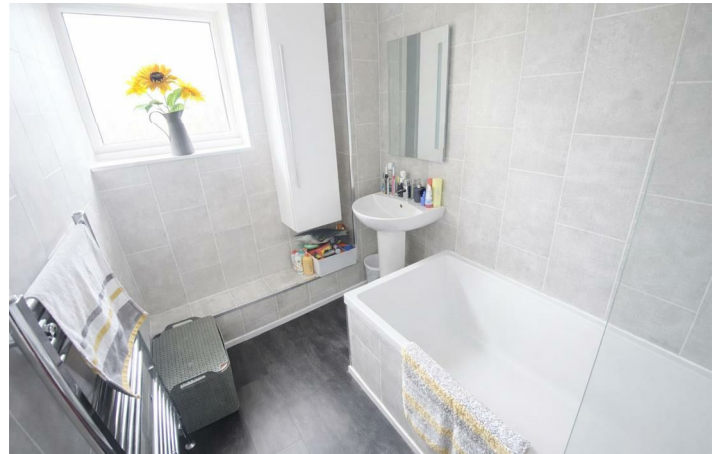
9'1 x 6'3

Bathroom

8'11 x 5'8

Separate W.C.

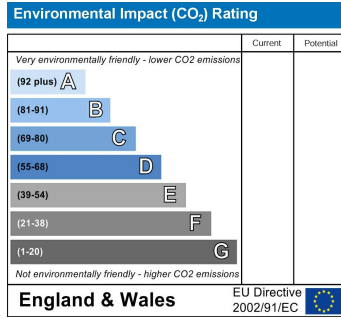
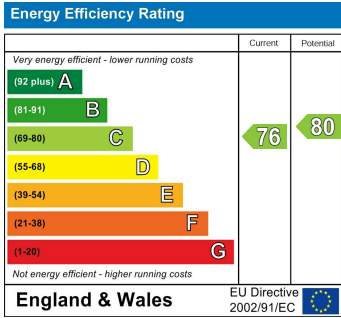
Externally







Local Authority Northumberland County
Council Tax Band A
EPC Rating C
Tenure Freehold



ML Estates Sales Office

27 Avenue Road, Seaton Delaval, Tyne
 And Wear, NE25 0DT

Contact

0191 237 60 60
 sd@mlestates.co.uk
 www.mlestates.co.uk/

Agents Note: Whilst every care has been taken to prepare these particulars, they are for guidance purposes only. All measurements are approximate and for general guidance purposes only and whilst every care has been taken to ensure accuracy, they should not be relied upon and potential buyers/tenants are advised to recheck the measurements.