

Need a Mortgage in principle to make offers? Call us now for quick assistance!
0121 775 0101



Do you need to sell? Start your journey now! Call us we can help.
0121 775 0101



79 Willow Road

Solihull, B91 1UF
Offers in Excess of £425,000

This well-presented semi-detached house is an ideal choice for families looking to upsize. With its traditional features and fantastic potential for extension, subject to planning permission, this property offers a wonderful opportunity to create your dream home.

FEATURES

- Semi-Detached with Potential to Extend (STPP)
- Bright Lounge to Front
- Separate Dining Room with Access to Garden
- Kitchen with Pantry Area
- Three Good Sized Bedrooms
- Modern Four Piece family Bathroom
- Private Rear Garden with Outside Store Room
- Driveway Parking
- Single Garage
- Popular Location

SCAN FOR MORE INFO

SIZE - 1003 Sq Ft
TENURE - Freehold
COUNCIL TAX - Solihull Metropolitan Borough Council - D
BROADBAND - Upload Max 1000Mbps Download Max 1800Mbps
MOBILE SERVICES - 3 - 84%, EE - 82%, O2 - 80%, Vodafone - 78%
EPC - D - 67
PARKING - For at least 2 Cars
FLOODRISK - Very Low
SERVICES - Mains
COVENANTS - N/A

Are you an investor interested in expanding your portfolio?

Call 0121 775 0101 to provide your investment criteria for alerts.



SCAN TO VIEW OUR WEEKLY FILMS & SUBSCRIBE

Sneak Peeks

Every week, we unveil "Sneak Peeks," a feature showcasing exclusive properties before they hit Rightmove and other platforms.

The Landlord Club

Join our Landlord Club for weekly updates on legislation, market trends, and our Letting Director's 'Investment Pick of the Week' for optimal ROI.

HTSPMD

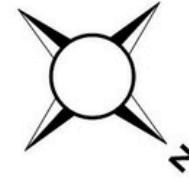
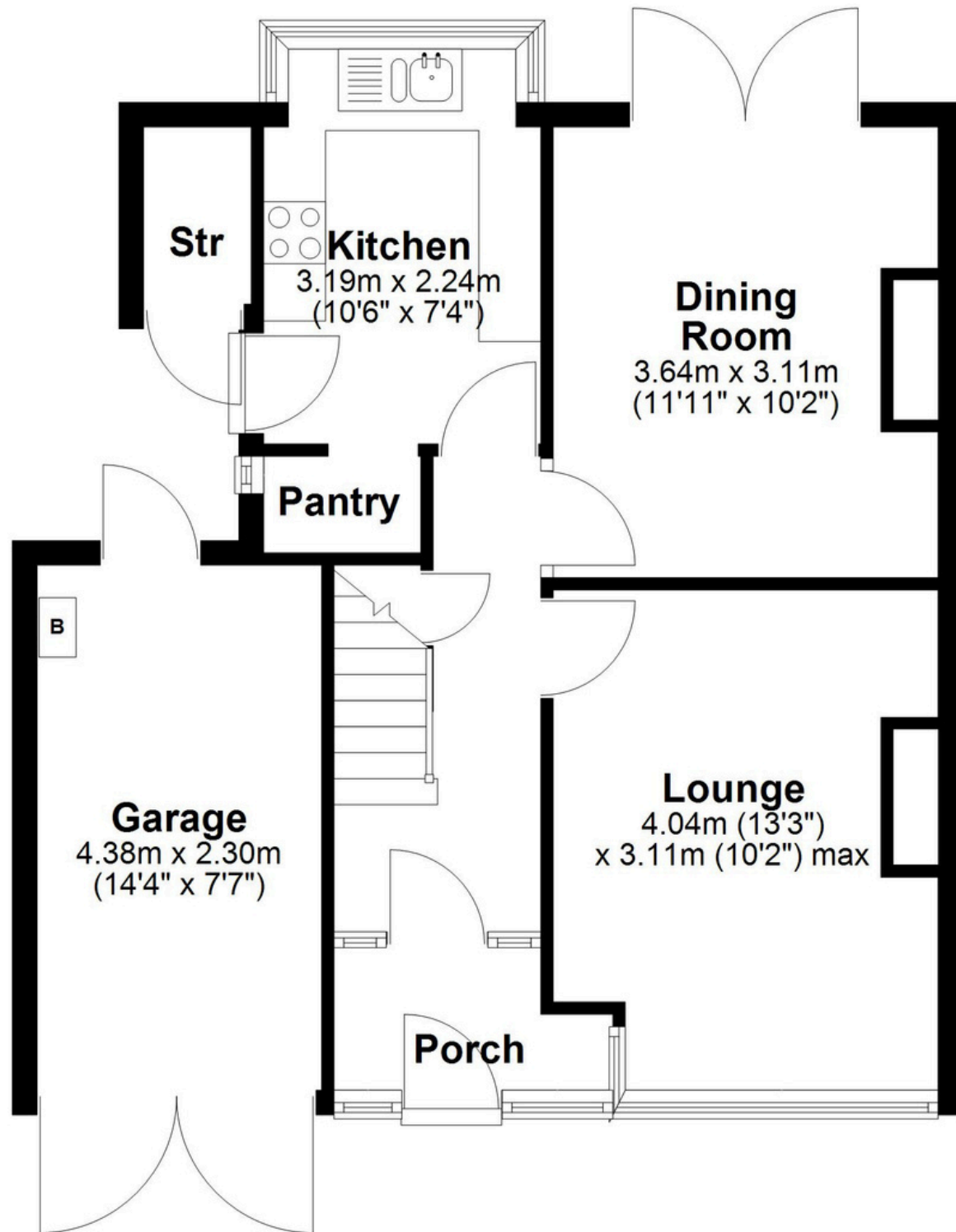
Tune into 'How's The Solihull Property Market Dom' weekly for a quick, insightful snapshot of the market.

The Mortgage Update

Get weekly insights and the best deals with our Mortgage Update, your shortcut to navigating the complex mortgage landscape confidently.

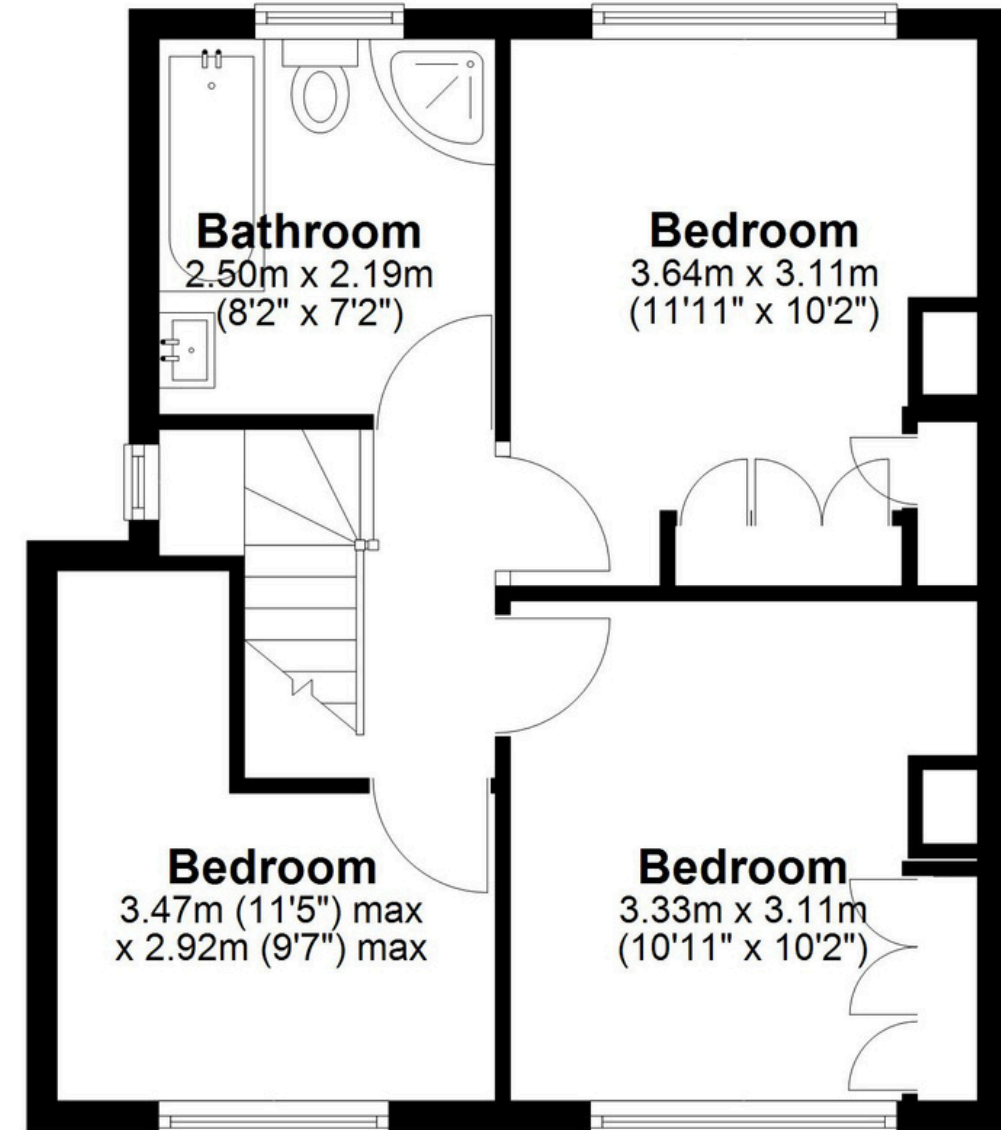
Ground Floor

Approx. 53.0 sq. metres (570.9 sq. feet)



First Floor

Approx. 40.6 sq. metres (437.4 sq. feet)



Total area: approx. 93.7 sq. metres (1008.3 sq. feet)

This floor plan is for illustration purposes only, this is not intended to be a measured/scaled survey or comply with RICS guidelines. All measurements (including total floor area) openings, orientation and floor area are approximate. No details are guaranteed, they cannot be relied upon for any purpose and do not form part of any agreement. A party must rely upon its own inspection(s). No responsibility is taken for any error, omission, or mis-statement.
Plan produced using PlanUp.