



Dorney House Queenswood Crescent, Egham, TW20 0AS

£395,000



# Dorney House Queenswood Crescent, Egham, TW20 0AS

We are delighted to present this stunning first-floor apartment, located within Dorney House in the highly sought-after Queenswood Crescent development, built in 2017 by the renowned CALA Homes. Positioned directly opposite the beautiful Windsor Great Park, the property enjoys a truly exceptional setting.

Perfectly suited to dog walkers, cyclists, and nature lovers, Windsor Great Park provides miles of scenic walks and breathtaking surroundings, while still offering excellent convenience. Englefield Green village centre is less than half a mile away, with Egham town centre, shops, and mainline train station approximately 1.25 miles away.

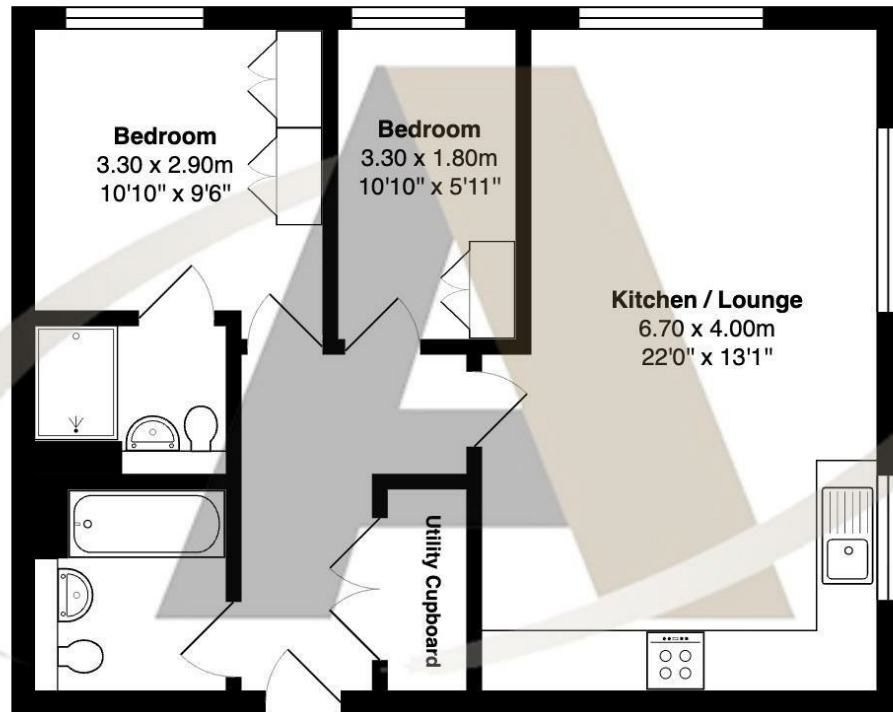
Accessed via lift or stairs, the apartment features a welcoming entrance hall with a useful utility cupboard including plumbing for a washing machine. The spacious open-plan lounge/dining area flows seamlessly into a modern, well-appointed kitchen, creating an ideal space for both relaxing and entertaining.

There are two bedrooms, both with high-quality built-in storage, and the principal bedroom is further enhanced by a stylish en-suite shower room. A contemporary family bathroom completes the accommodation. The property also benefits from double glazing and gas central heating throughout.

Externally, residents can enjoy beautifully maintained communal gardens, along with two allocated off-street parking spaces to the rear of the building. A secure, communal bike store is also available.



## Floor Plan



## Dorney House, Queenswood Crescent Englefield Green, TW20 0AS

Total Area: 57.2 m<sup>2</sup> ... 615 ft<sup>2</sup>

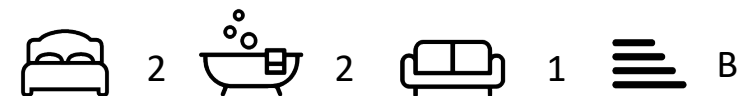
All measurements are approximate and for display purposes only



## Features

- Stunning first-floor apartment in the prestigious Queenswood Crescent development
- Directly opposite Windsor Great Park with beautiful open views
- Two well-proportioned bedrooms with quality built-in storage
- Contemporary family bathroom, double glazing and gas central heating
- Built in 2017 by renowned developers CALA Homes
- Spacious open-plan lounge/dining area with modern fitted kitchen
- Principal bedroom with stylish en-suite shower room
- Landscaped communal gardens, two allocated parking spaces and secure bike storage

10 St Judes Road, Englefield Green, Surrey TW20 0BY  
Tel 01784 433696  
sales@aspenestateagents.co.uk



Tenure - Leasehold Council Tax Band - D



