



**BEAUCHAMP
ESTATES**

Cheyne Walk

CHELSEA





Grade II listed townhouse on
Cheyne Walk, river views.

 8  6

Exterior

The property includes a 55 ft private garden extending from the rear of the house, providing a rare depth of outside space for this stretch of the Thames. The frontage sits directly on Cheyne Walk with uninterrupted south-facing views towards the river and Albert Bridge. A separate mews house to the rear incorporates a garage with capacity for two cars, accessed independently, and is linked to the main house via an underground passageway.

Highlights

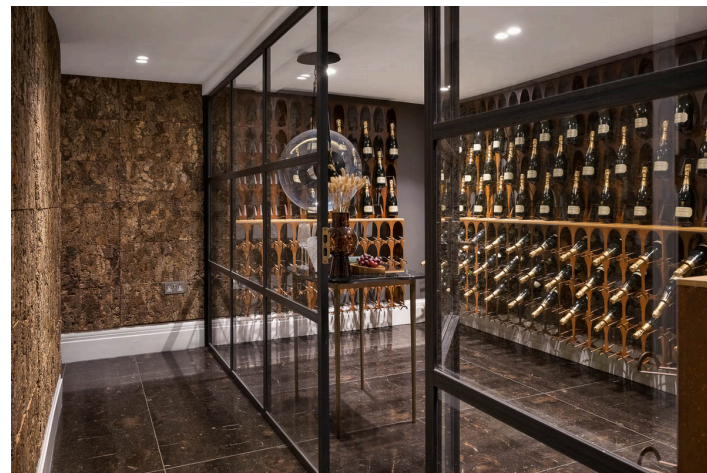
- Available for short let (minimum one month)
- Grade II listed status
- Direct south-facing views over the River Thames
- Separate two-bedroom mews





Interiors

Arranged over five floors, the main house has been recently refurbished and interior designed, combining period structure with contemporary detailing. A full-floor reception room on the first level frames direct river views, while the rear portion can be partitioned to form a study overlooking the garden. Vertical circulation is supported by a lift serving all principal floors. The lower ground level introduces informal living with a cinema room and wine cellar, while the principal suite occupies an entire floor, creating separation from the remaining bedroom accommodation.

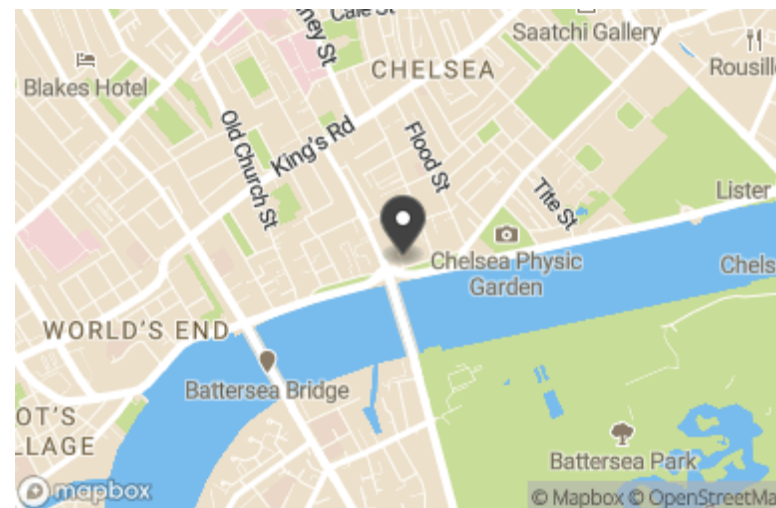


Features

- Air Conditioning
- Double Garage
- Furnished
- Lift
- Wine Cellar

Location

Cheyne Walk runs along the north bank of the River Thames in Chelsea, positioned between Albert Bridge and Battersea Bridge. The area is served by Sloane Square Underground station (District and Circle lines) and nearby bus routes along Chelsea Embankment. King's Road provides access to a range of retail and dining options, while the Embankment offers direct routes towards Westminster and the City by road.



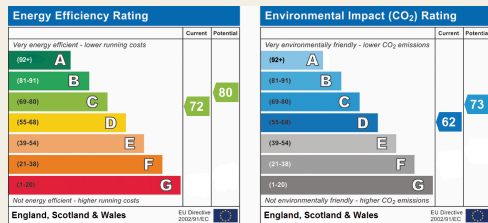
Terms

Price: £30,000 per week

Tenure: Freehold

Local Authority: Kensington & Chelsea

Council Tax: H



Beauchamp Estates, their clients and any joint agents give notice that: 1. They are not authorised to make or give any representation or warranties in relation to the property either here or elsewhere, either on their own behalf or on behalf of their client or otherwise. They assume no responsibility for any statement that may be made in these particulars. These particulars do not form part of any offer or contract and must not be relied upon as statements or representations of fact. 2. Any Areas, measurements or distances are approximate. The text photographs and plans are for guidance only and are not necessarily comprehensive. It should not be assumed that the property has all necessary planning, building regulation or other consents and Beauchamp Estates have not tested any services, equipment or facilities. Purchasers must satisfy themselves by inspection or otherwise.





**BEAUCHAMP
ESTATES**

Beauchamp Estates - Mayfair

24 Curzon Street,
London, W1J 7TF

020 7499 7722

londoninformation@beauchampestates.com

www.beauchampestates.com