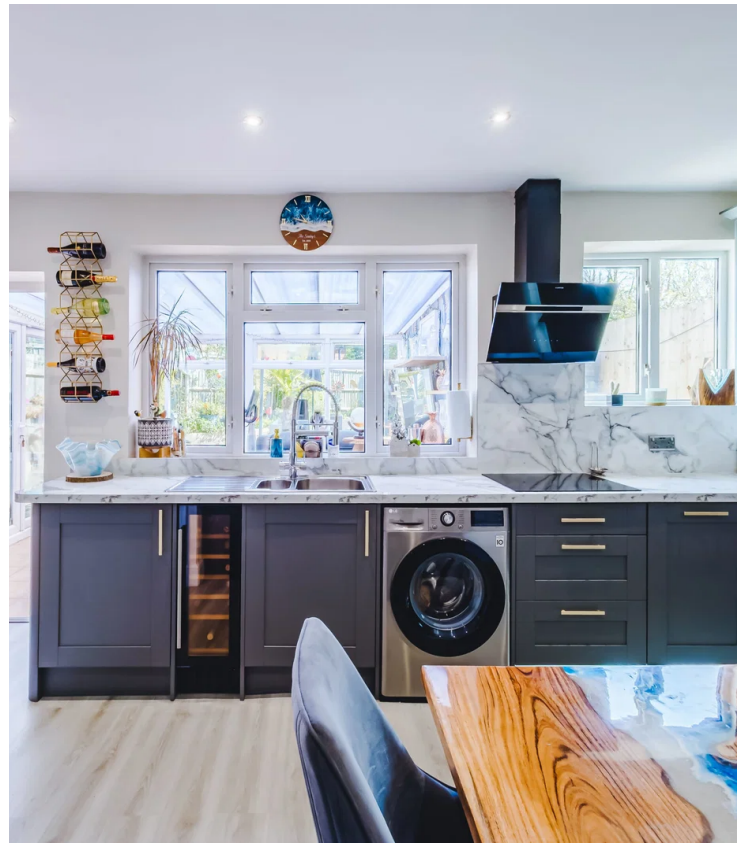




21 Templars Firs, SN4 7EW

£300,000



An exceptional opportunity awaits with this three-bedroom home, complete with a large driveway and situated in the desirable location of Royal Wootton Bassett. Offering flexible viewings, this property is an ideal choice for those seeking a well-connected and modernised home. Contact us today to arrange your viewing.

- Large driveway
- North East facing garden
- Desirable location of Royal Wootton Bassett
- Modernized kitchen
- Council Tax band B
- Three good sized bedrooms
- Flexible viewings available
- Downstairs W.C
- Bright conservatory

Bedrooms: 3 | Bathrooms: 1 | Receptions: 2

Property Type: Semi Detached House

Council Tax Band: B



An exceptional opportunity awaits with this three-bedroom home, complete with a large driveway and situated in the desirable location of Royal Wootton Bassett. Offering flexible viewings, this property is an ideal choice for those seeking a well-connected and modernised home. Contact us today to arrange your viewing.

Step inside to discover a welcoming space leading to a convenient downstairs W.C. The heart of the home features a beautifully modernised kitchen, designed for both functionality and style. Adjacent to this, a bright conservatory provides an additional versatile living area, perfect for relaxation or entertaining, and offers a pleasant outlook onto the North East facing garden.

Upstairs, you will find three good sized bedrooms, providing comfortable accommodation. The flexible layout caters to various needs, offering ample space for a growing household or dedicated home office areas.

Externally, the property boasts a large driveway, providing ample off-street parking. The North East facing garden offers a pleasant outdoor space for enjoyment and low-maintenance living. With a Council Tax band B, this home presents an attractive proposition in a sought-after area.

Room Sizes:

Ground Floor

Conservatory: 3.69 m × 3.00 m (12'1" × 9'10")

Kitchen Diner: 4.57 m × 3.12 m (15'0" × 10'3")

Lounge: 3.44 m × 4.32 m (11'3" × 14'2")

Hallway: 1.77 m × 4.04 m (5'10" × 13'3")

First Floor

Bedroom 2: 3.32 m × 3.12 m (10'11" × 10'3")

Bedroom 3: 2.28 m × 2.39 m (7'6" × 7'10")

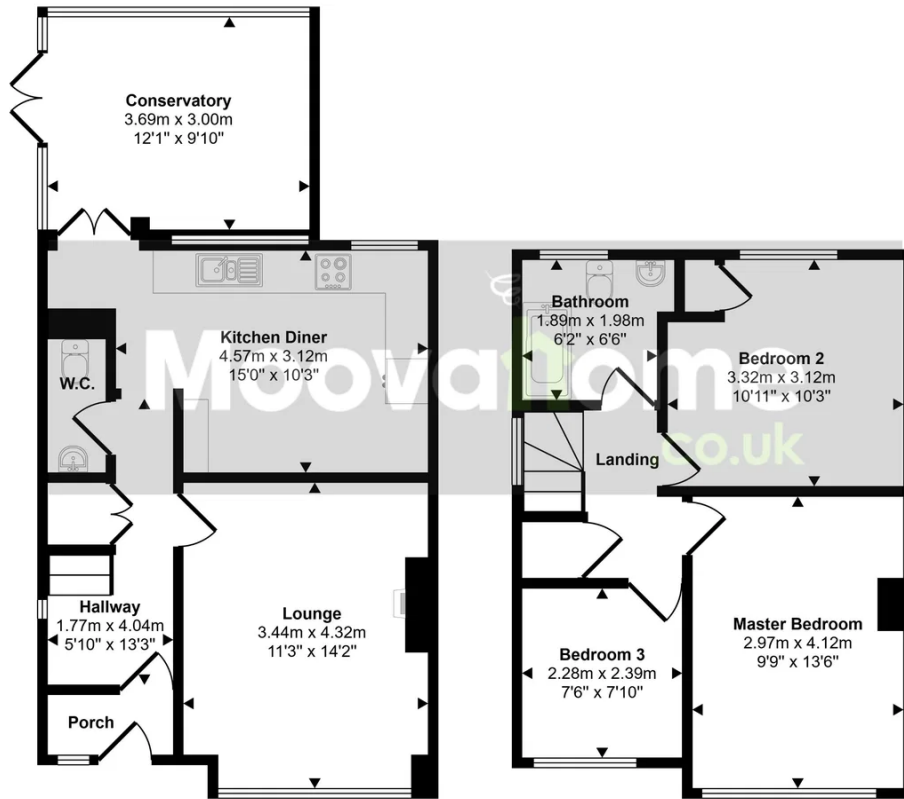
Master Bedroom: 2.97 m × 4.12 m (9'9" × 13'6")

Bathroom: 1.89 m × 1.98 m (6'2" × 6'6")





Approx Gross Internal Area
91 sq m / 976 sq ft



Ground Floor
Approx 52 sq m / 557 sq ft

First Floor
Approx 39 sq m / 419 sq ft

This floorplan is only for illustrative purposes and is not to scale. Measurements of rooms, doors, windows, and any items are approximate and no responsibility is taken for any error, omission or mis-statement. Icons of items such as bathroom suites are representations only and may not look like the real items. Made with Made Snappy 360.



Moovahome

20 Ergo Business Park Kelvin Road, Swindon, SN3 3JW

01793 512345

hello@moovahome.co.uk

<https://moovahome.co.uk/>

