



**Cressida Road, N19**

**£1,525,000**

**Dexters**



## Cressida Road, N19

An elegant and light filled double fronted semi-detached Victorian style house arranged over two floors, retaining a host of period features including high ceilings, sash windows and fireplaces.

The ground floor comprises of a delightful entrance hall with an original tiled floor, leading to two separate receptions rooms with ornate cornices and bay windows with wooden flooring , a modern extended kitchen dining room and ground floor cloakroom.

The first floor has three double bedrooms a family bathroom, en suite shower room to the main bedroom and far reaching views over the City skyline. The loft space has been fully boarded and lined to provide ample and convenient storage.

There is also a delightful enclosed garden with two seating areas and an generous outside shed.

Located within the sought after Whitehall Park Conservation Area, there is easy access to a number of schools, a selection of convenience stores and good transport connections including Archway tube station less than half a mile away.

### Features

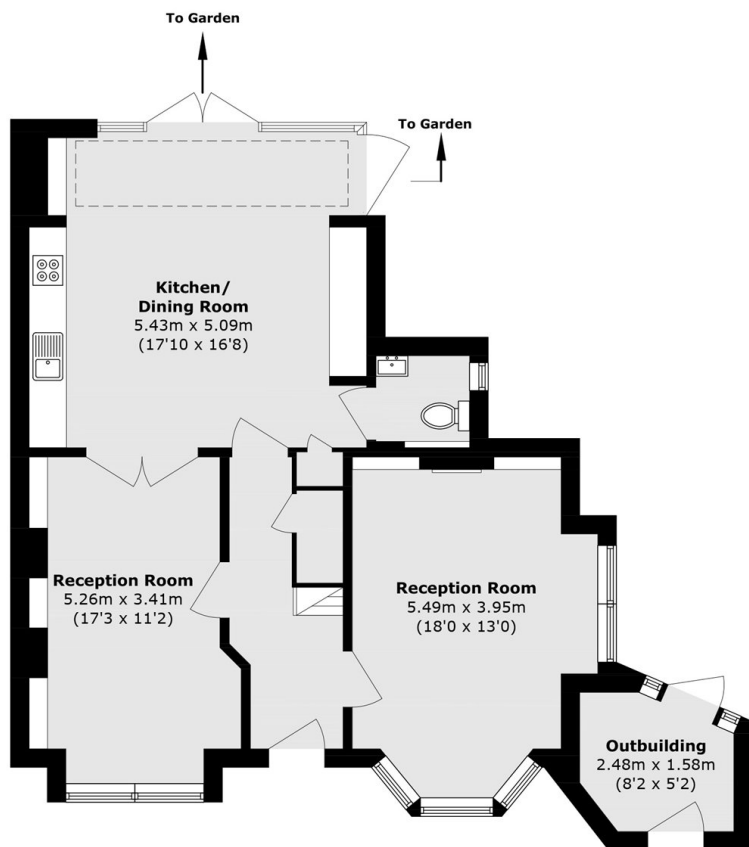
- Three Double Bedrooms
- Two Reception Rooms
- Kitchen Dining Room
- Two Bathrooms
- Private Garden
- Guest WC



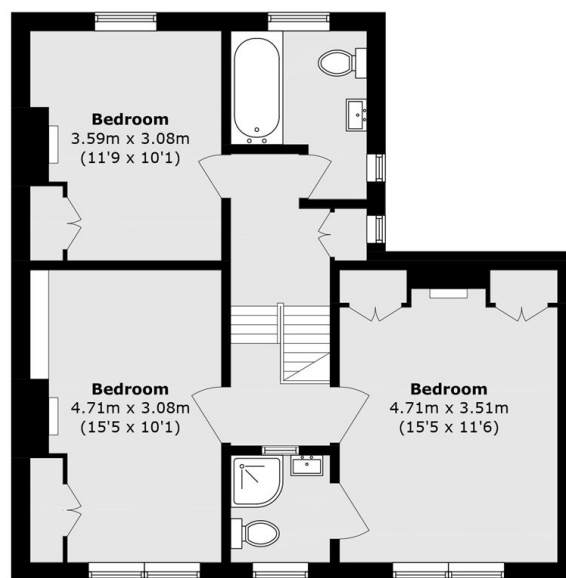




# Cressida Road, London, N19



**Ground Floor**



**Ground Floor**

Total area (approx.): 135.8 sq. m (1461.6 sq. ft)  
Outbuilding area (approx.): 4.82 sq. m (51.9 sq. ft)