



ST. ALPHONSUS ROAD, SW4

£600,000

Victorian property
Three bedrooms
Two bathrooms
Share of freehold
Close to Clapham Common
Energy rating: e

@marshandparsons
marshandparsons.co.uk

MARSH &
PARSONS



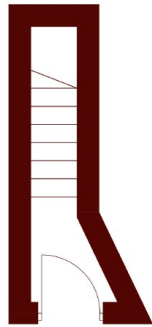
ABOUT THE PROPERTY

A spacious three bedroom, two bathroom Victorian upper maisonette, featuring a bright reception room with exposed brickwork, well-proportioned accommodation, and ideally positioned just moments from Clapham Common. Share of freehold.

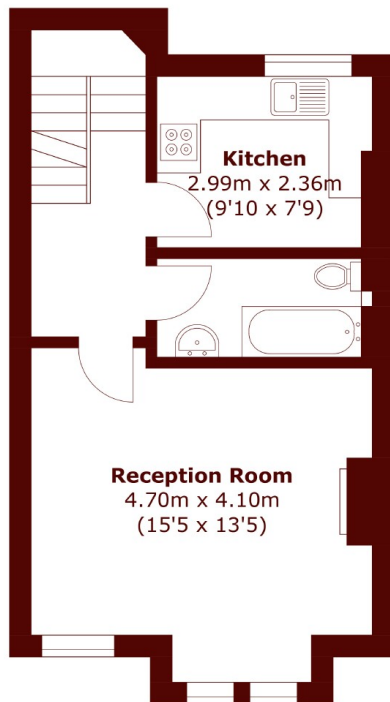
Tucked between Abbeville Road and Clapham Common South Side, St. Alphonsus Road is a sought-after residential street just moments from Clapham Common Underground and within easy reach of Clapham High Street Overground, along with excellent local bus routes, providing swift connections into the City, West End and Canary Wharf.



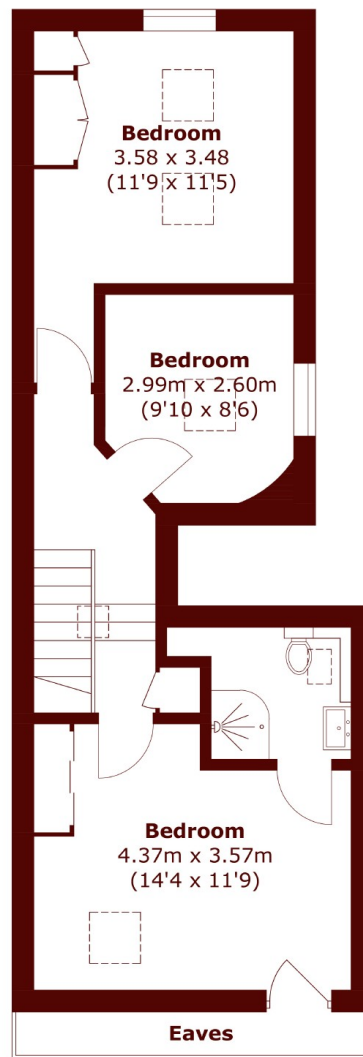
STEP INSIDE ST. ALPHONSUS ROAD



Ground Floor



First Floor



Second Floor

Total area (approx.): 89.5 sq. m (963.3 sq. ft)
(Excluding Eaves)

Clapham
020 7501 3666

Energy Rating: E We aim to make our particulars both accurate and reliable. However, they are not guaranteed; nor do they form part of an offer or contract. If you require clarification on any points then please contact us, especially if you're traveling some distance to view. Please note that appliances and heating systems have not been tested and therefore no warranties can be given as to their good working order

**MARSH &
PARSONS**