

30 Ponton Road London

A wonderful one bedroom apartment situated in The Residence development ideally located for zone one transport links from Vauxhall & Nine Elms stations.

The property features an open plan kitchen and living space with a separate private balcony. Finished to the highest standard apartments include AEG fully integrated appliances including washer/dryer, oven and microwave as well as underfloor heating throughout.

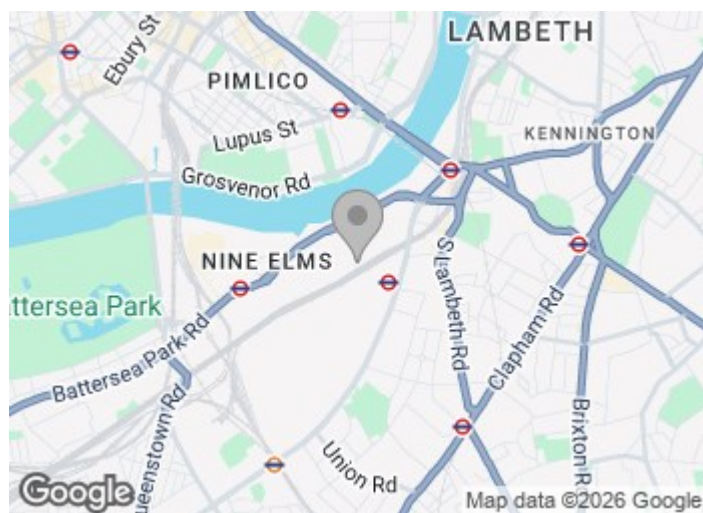
Residents will also benefit from the wonderful onsite amenities including the gym, yoga room, private cinema and meeting rooms.

£675 Per Week

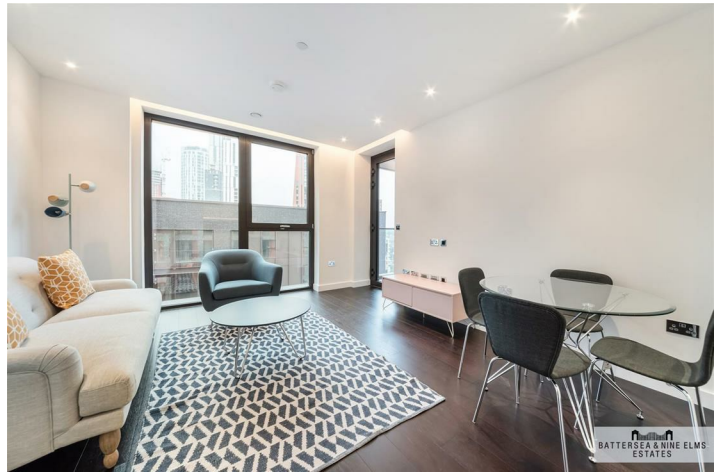
30 Ponton Road London



- One bedroom
- Under floor heating
- Gym
- One bathroom
- Private cinema
- Private balcony
- Excellent transport links



[Directions](#)



Madeira Tower,
The Residence,
Ponton Road, SW8
Approximate Gross Internal Area
50.00 sq m / 538 sq ft

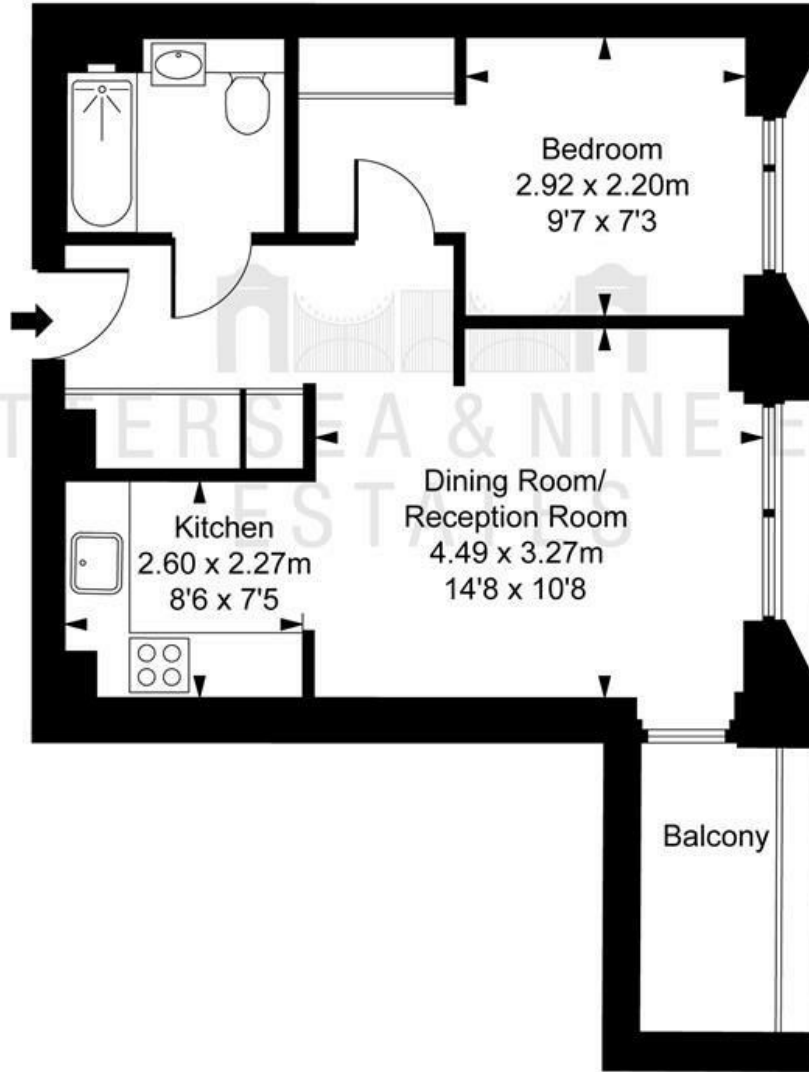


ILLUSTRATION FOR IDENTIFICATION PURPOSES ONLY
ALL MEASUREMENTS ARE MAXIMUM, AND INCLUDE WINDOW BAYS AND WARDROBES WHERE APPLICABLE
THIS PLAN MUST NOT BE REPRODUCED BY ANY OTHER PERSON WITHOUT PERMISSION

These particulars, whilst believed to be accurate are set out as a general outline only for guidance and do not constitute any part of an offer or contract. Intending purchasers should not rely on them as statements of representation of fact, but must satisfy themselves by inspection or otherwise as to their accuracy. No person in this firm's employment has the authority to make or give any representation or warranty in respect of the property.

Energy Efficiency Rating		Environmental Impact (CO ₂) Rating		
	Current	Potential		
<p>Very energy efficient - lower running costs</p> <p>(92 plus) A</p> <p>(81-91) B</p> <p>(69-80) C</p> <p>(55-68) D</p> <p>(39-54) E</p> <p>(21-38) F</p> <p>(1-20) G</p> <p>Not energy efficient - higher running costs</p>	87	87	<p>Very environmentally friendly - lower CO₂ emissions</p> <p>(92 plus) A</p> <p>(81-91) B</p> <p>(69-80) C</p> <p>(55-68) D</p> <p>(39-54) E</p> <p>(21-38) F</p> <p>(1-20) G</p> <p>Not environmentally friendly - higher CO₂ emissions</p>	94
England & Wales	EU Directive 2002/91/EC		England & Wales	EU Directive 2002/91/EC