



MALLINSON
& CO

INNOVATIVE PROPERTY EXPERTS

Morton Place, Grenoside, Sheffield, S35 8PT

Offers Over £295,000

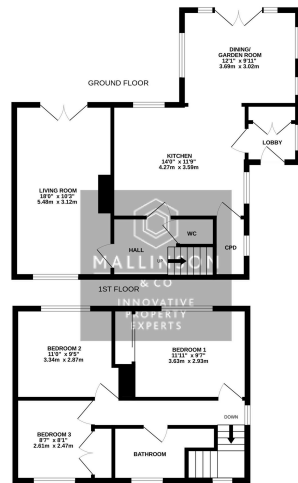
🛏 3 🚿 1 🚗 1



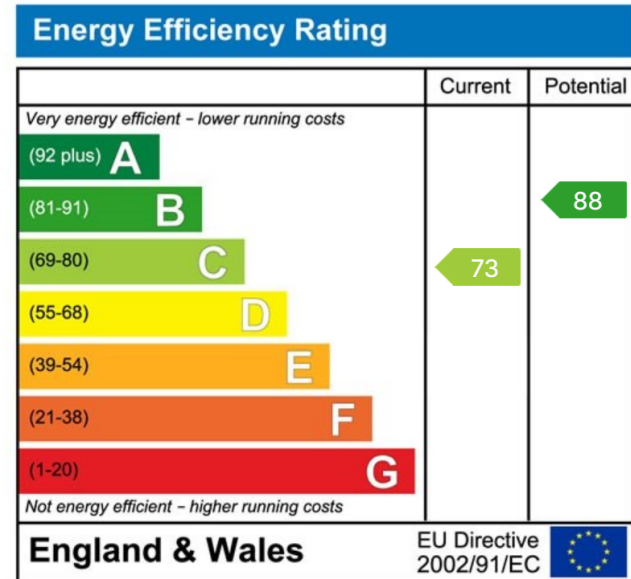
- SEMI DETACHED
- 3 BEDROOMS
- BEAUTIFULLY PRESENTED THROUGHOUT
- SUPERB OPEN PLAN KITCHEN DINER
- DOWNSTAIRS W.C.
- CONTEMPORARY BATHROOM
- OFF STREET PARKING FOR SEVERAL VEHICLES
- LARGE LANDSCAPED REAR GARDEN
- DETACHED SUMMER HOUSE
- CUL DE SAC LOCATION CLOSE TO AMENITIES & TRANSPORT LINKS



AN EXCEPTIONAL OPPORTUNITY TO ACQUIRE THIS BEAUTIFULLY APPOINTED THREE-BEDROOM SEMI-DETACHED HOME, TUCKED AWAY AT THE HEAD OF A QUIET CUL-DE-SAC AND OCCUPYING A GENEROUS, PRIVATE PLOT. THOUGHTFULLY DESIGNED FOR MODERN LIVING, THE PROPERTY BOASTS A STYLISH OPEN-PLAN KITCHEN DINER WITH A STRIKING EXTENDED DINING AREA, A LIGHT-FILLED DUAL-ASPECT LOUNGE, AND A SUPERB DETACHED STONE-BUILT SUMMER HOUSE CURRENTLY UTILISED AS A BESPOKE BAR AND ENTERTAINMENT SPACE. WITH BEAUTIFULLY MAINTAINED GARDENS, MULTIPLE PATIO AREAS, AND A HIGH DEGREE OF SECLUSION, THIS HOME PERFECTLY COMBINES EVERYDAY COMFORT WITH IMPRESSIVE ENTERTAINING SPACE.



TOTAL FLOOR AREA: 1014 sq ft (94.2 sq m) approx.
 Whilst every attempt has been made to ensure the accuracy of the floor plan, measurements of rooms, yards and any other parts are approximate and no responsibility is taken for any error, omission or misrepresentation. This plan is for illustrative purposes only and does not constitute an offer of any property. The services, facilities and quantities shown are not intended to be guaranteed. All is best opportunity or efficiency can be given. Measurements are to the centre of walls unless otherwise stated.



INNOVATIVE
PROPERTY
EXPERTS

Mallinson & Co

Office: 01226 414 150

Email: ben@mallinsonandco.co.uk

Web: www.mallinsonandco.co.uk

Suite 6, Penistone 1, St. Mary's Street, Penistone, S36 6DT