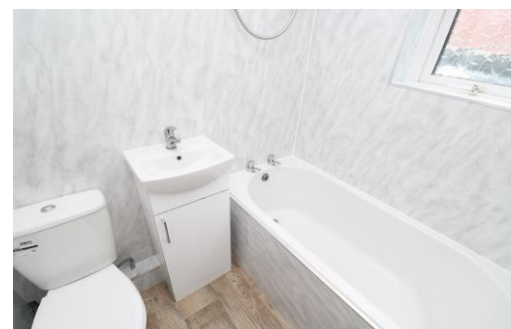




Ridley Gardens, Swalwell, Tyne And Wear, NE16 3HT

*****AVAILABLE NOW***** Recently updated two bedroom ground floor flat, within easy access of local shops, transport links and the Metro Centre. The property comprises of entrance hallway, lounge, kitchen, two bedrooms, a small utility area and a bathroom W/C. Externally the property benefits from a low maintenance gravel garden to the front and enclosed yard to the rear. Parking available on street. Available immediately on an unfurnished basis. EPC rating D.



*****AVAILABLE NOW*****

Two Bedroom Flat

Ground Floor

Recently Decorated

Holding Deposit £138

EPC Rating D

£600 per month

Lounge 11' 11" x 11' 0" (3.63m x 3.35m)

Built in cupboards.

Kitchen 8' 1" x 6' 5" (2.47m x 1.95m)

Fitted with a range of wall and base units. Integrated oven and hob. Space for washing machine (not included). Leading to utility area with space for fridge/freezer (not included).

Bedroom 1 14' 3" x 10' 11" (4.35m x 3.32m) max

Bay window.

Bedroom 2 8' 3" x 8' 2" (2.52m x 2.50m)

Cupboard housing gas fired boiler.

Bathroom 5' 7" x 4' 8" (1.71m x 1.41m)

Bath with shower over, wash basin, W/C.

Externally

Low maintenance gravel garden to front. Enclosed yard to rear. Parking available in back lane.

Holding deposit

This holding deposit secures the property for you while we conduct your reference checks and goes towards your first months rent prior to move in. It is not an additional fee.

Additional information

Security deposit/bond equivalent to 1 months rent plus 1 months rent payable up front. EPC rating D. Council tax band A.



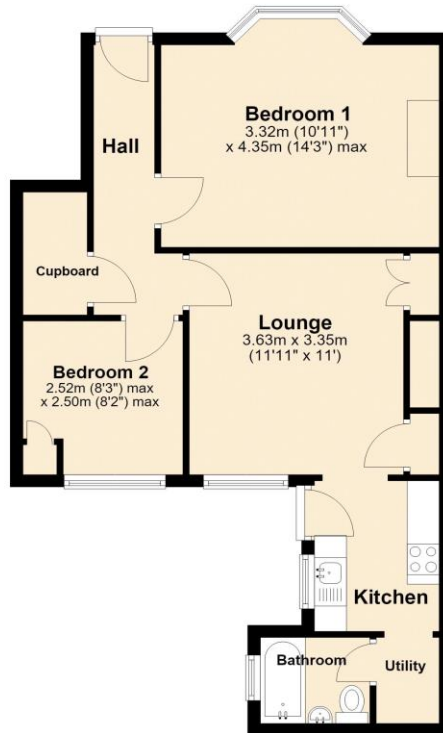
EPC Graph (full EPC available on request)



Floorplan

Ground Floor

Approx. 52.6 sq. metres (566.3 sq. feet)



Total area: approx. 52.6 sq. metres (566.3 sq. feet)

For more information please call **0191 414 1200** or email info@livinglocalhomes.co.uk

WE WIN AWARDS year-after-year and are currently ranked in the top 5% for lettings in the country!

Lorraine Valuer & Negotiator

Emma Owner & Managing Director

Laura
Sales & Lettings Negotiator

Brooke
Lettings
Co-ordinator

Louise
Sales & Lettings Negotiator



facebook

PRS
Property
Redress
Scheme

rightmove

onTheMarket.com

Zoopla.co.uk

PrimeLocation.com

firstmortgage.co.uk®

