

**33 KENNEDY MEADOW  
HUNGERFORD**



**Marshall**  
Estate Agents

## 33 Kennedy Meadow Hungerford, Berkshire, RG17

£599,950

Approximately 0.9 Miles to Hungerford  
Railway Station

Approximately 9.2 Miles to Newbury

Approximately 4 Miles to M4 J14

- Freehold
- Detached House
- Sought After Location
- Entrance Hall
- Kitchen/Dining Room
- Sitting Room
- Conservatory
- Cloakroom/W.C.
- Three Comfortable Bedrooms
- En-Suite Shower Room
- Family Bathroom
- Pretty Front & Rear Garden
- Driveway
- Garage
- Gas Central Heating
- Double Glazing



### Situation

The pretty market Town of Hungerford is steeped in History and sits on the banks of the chalk stream River Kennet and the Kennet and Avon canal. The Town is well served by a variety of shops including butchers, bakers, independent retailers and of course antique shops. Other amenities include two supermarkets, a post office, two building societies and a doctors surgery. There is also a swimming pool, leisure sports centre, gym and tennis club.



### **The Property**

A beautifully presented family home set within a highly sought after residential area of Hungerford.

The well planned accommodation features a welcoming entrance hall and a bright, comfortable Living room with a bay window and an attractive feature fireplace. The modern Kitchen/Dining room is finished to a high standard offering stylish cabinetry and sleek work surfaces. From the Living room, double doors open into a versatile Conservatory, and there is also a convenient cloakroom/W.C.

Upstairs, there are three well proportioned Bedrooms. The main bedroom enjoys a double aspect outlook, built in wardrobes, and a contemporary en-suite shower room. Bedrooms two and three are served by a well appointed family Bathroom.

### **Outside**

The front of the property offers a driveway with parking for three vehicles, leading to a garage equipped with power and lighting.

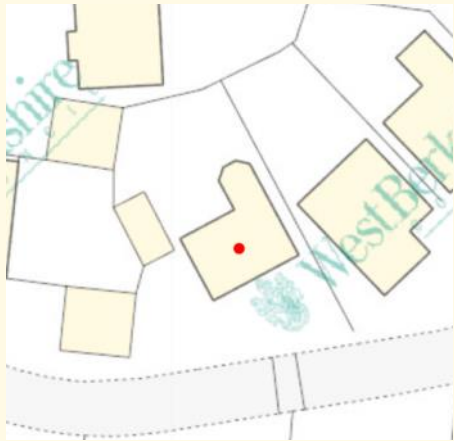
A small lawned area and a neat garden path enhance the kerb appeal. To the rear, the attractive garden is mainly laid to lawn, complimented by a patio area and established flower beds.

Overall, this delightful home offers a warm, inviting atmosphere and has been finished with care and attention to detail.









Score	Energy rating	Current	Potential
92+	A		
81-91	B		
69-80	C	74 C	79 C
55-68	D		
39-54	E		
21-38	F		
1-20	G		

Services

Mains Water & Drainage  
 Mains Electricity  
 Mains Gas

Council Tax Band: E

What 3 Words Location: ///lowest.megawatt.yards

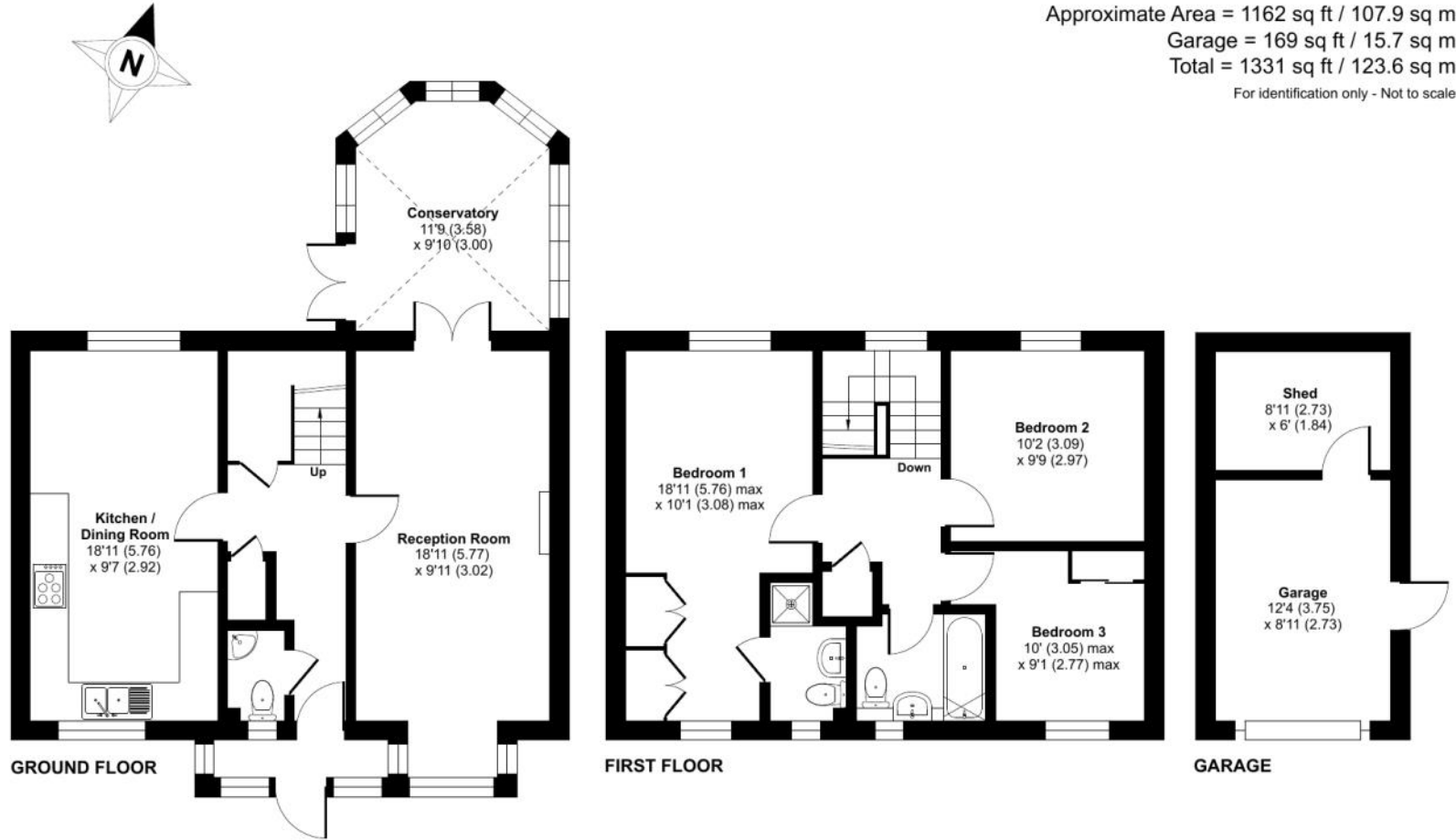


**01488 686867**

www.marshallestateagents.co.uk  
 sales@marshallestateagents.co.uk  
 19 High Street  
 Hungerford, Berkshire, RG17 0NL

# Kennedy Meadow, Hungerford, RG17

Approximate Area = 1162 sq ft / 107.9 sq m  
 Garage = 169 sq ft / 15.7 sq m  
 Total = 1331 sq ft / 123.6 sq m  
 For identification only - Not to scale



Floor plan produced in accordance with RICS Property Measurement 2nd Edition, Incorporating International Property Measurement Standards (IPMS2 Residential). © nchecon 2026. Produced for Marshall Estate Agents Ltd. REF: 1437444



These particulars are not an offer or contract or part thereof. Their accuracy is not guaranteed. No statement made in them shall be relied on as a statement or representation of fact and we and the vendors have no responsibility for them. We and our employees have no authority to and do not make or give any representations or warranty concerning this property any appliances mentioned or general services and any intending purchase must rely upon an inspection of the property.