



## MACCLESFIELD ROAD, EC1V

£430,000

Private Balcony  
New Build Development  
Communal Gardens  
Long Lease  
Fitted Kitchen  
Fob Entry

@marshandparsons  
marshandparsons.co.uk

MARSH &  
PARSONS



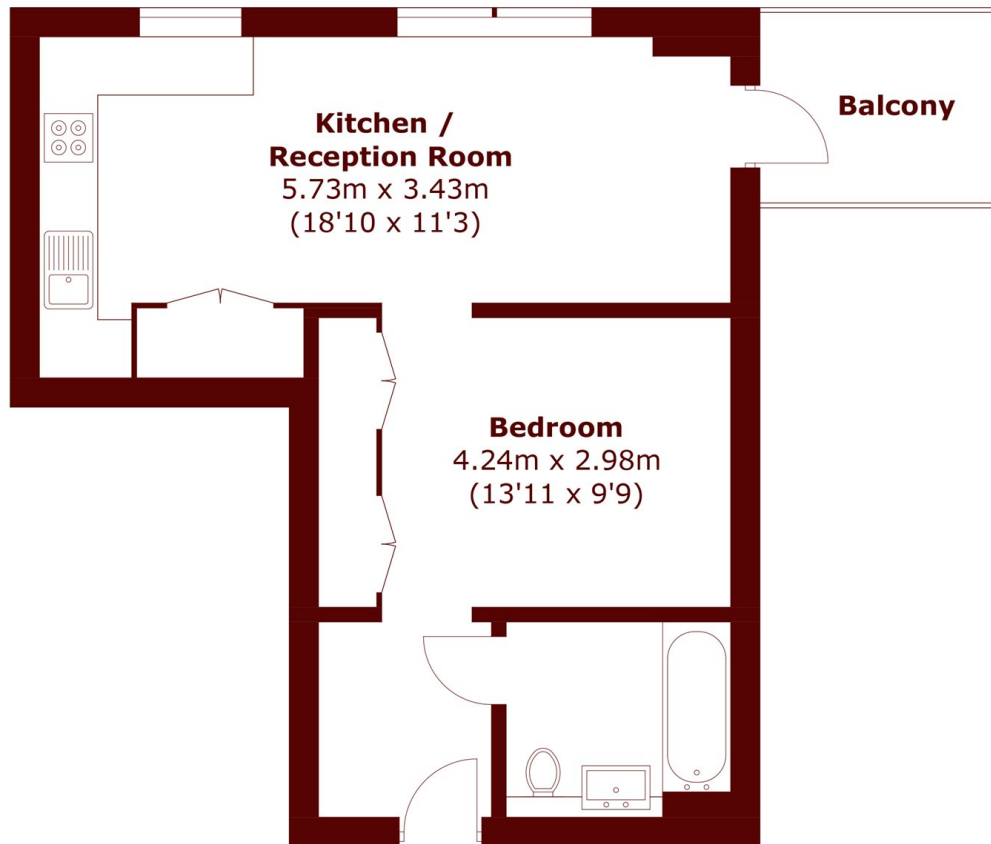
# ABOUT THE PROPERTY

Immaculately presented, this stylish apartment boasts high ceilings and abundant natural light. It offers a generously sized open-plan reception with a dining area, seamlessly extending onto a large private balcony.

This stunning property is just an 8-minute walk from Old Street Underground Station and 11 minutes from Angel Underground Station. It's also just a stone's throw from the picturesque Regent's Canal.



# STEP INSIDE MACCLESFIELD ROAD



Total area (approx.): 44.4 sq. m (477.9 sq. ft)  
Balcony: 4.8 sq. m (51.7 sq. ft)

Camden  
020 7244 2200

Energy Rating: B We aim to make our particulars both accurate and reliable. However, they are not guaranteed; nor do they form part of an offer or contract. If you require clarification on any points then please contact us, especially if you're traveling some distance to view. Please note that appliances and heating systems have not been tested and therefore no warranties can be given as to their good working order

MARSH &  
PARSONS