

Poynders Gardens, SW4

£1,800 Per calendar month

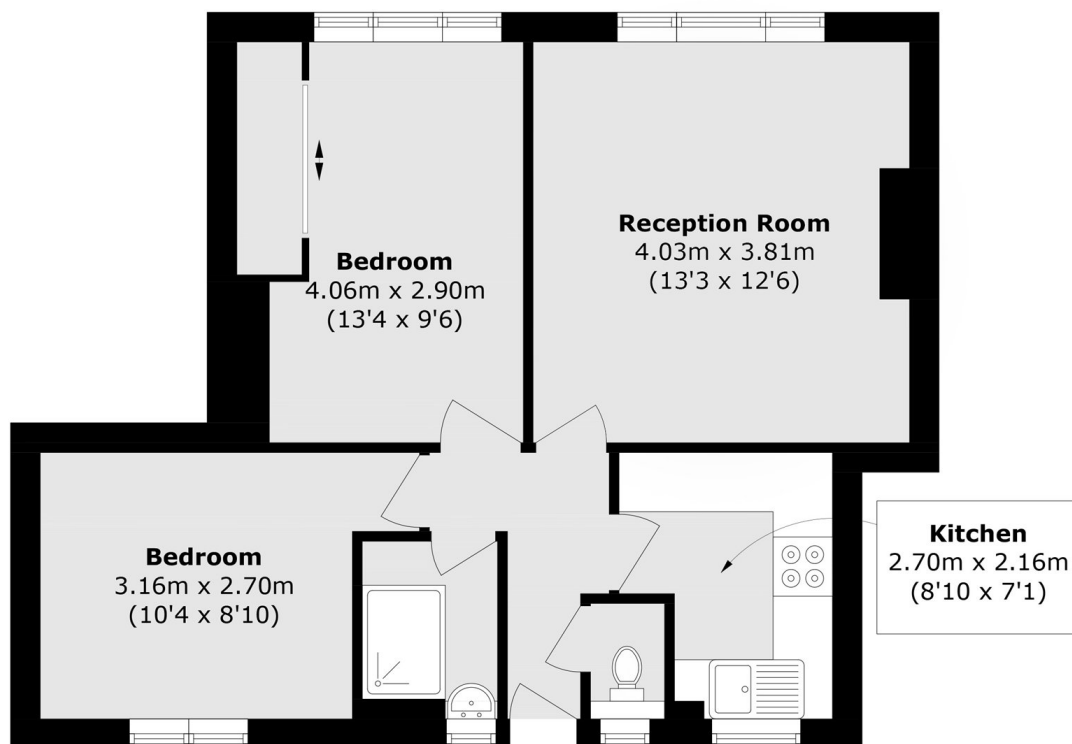
This two double bedroom flat is situated on the top floor of a purpose-built development. Offering a separate kitchen and reception room, a modern bathroom and a separate WC. Ideal for professional sharers.

Hardy House is ideally located close to the local amenities of Clapham South and Balham with access to various supermarkets, cafés, bars and restaurants. Along with Abbeville Village around the corner.

Features

- Two Double Bedrooms
- Large Reception
- Modern Bathroom
- Separate WC
- Double Glazing
- Close To Underground

Poynders Gardens, London, SW4



Total area (approx.): 49.9 sq. m (537.1 sq. ft)