



15 London Road, Redhill

£1,400 (From) Per Month





“

straightforward, well-located home that prioritises ease and accessibility, Queensway House is perfectly suited to tenants wanting a clean, modern base with excellent transport links. Available across a range of layouts, these apartments are ready for immediate occupation and simple day-to-day living.

”



Queensway House presents a selection of thoughtfully refurbished apartments, each designed with a focus on simplicity, light and everyday practicality. The interiors follow a consistent, understated style—clean lines, pale tones and durable finishes that allow you to make the space your own.

Kitchens are neatly arranged with integrated appliances and modern cabinetry, flowing naturally into open-plan living areas that feel bright and uncluttered. Bedrooms are well-proportioned and offer a calm, restful feel, while bathrooms are finished in a contemporary style with neutral tiling and modern fittings.

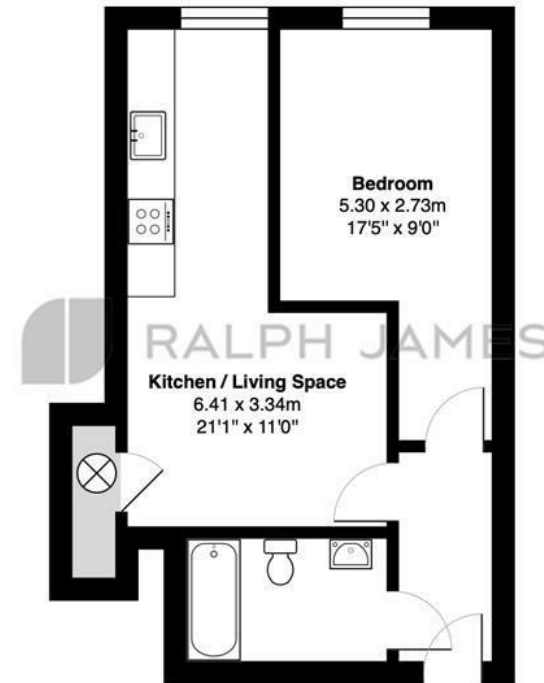
The building itself sits in a highly convenient spot—ideal for those needing quick access into London, with Redhill station close by offering direct services. On your doorstep, you'll find a mix of cafés, shops and everyday essentials, while nearby Reigate provides a more characterful high street with restaurants, bars and green spaces.

These apartments suit tenants looking for something low-maintenance, well-located and easy to settle into from day one.



Need to know

- Selection of newly refurbished apartments
- Open-plan kitchen and living spaces with a bright, neutral finish
- Contemporary kitchens with integrated appliances
- Well-proportioned bedrooms with a clean, minimal feel
- Modern bathrooms with updated fittings and tiling
- Positioned within easy reach of Redhill mainline station
- Surrounded by local shops, cafés and everyday amenities
- Ideal for commuters needing fast London connections
- EPC: To be confirmed
- Council Tax Band: To be confirmed



Second Floor

Flat 6, Queensway House, 15 London Road, Redhill

Total Area: 38.3 m² ... 412 ft²

FOR ILLUSTRATIVE PURPOSES ONLY.

Whilst every attempt has been made to ensure the accuracy of the floor plan shown, all measurements, positioning, fixtures, features, fittings and any other data shown are an approximate interpretation for illustrative purposes only and are not to scale.

No responsibility is taken for any error, omission, miss-statement or use of data shown.

The above statement applies to both 'Still Moving London LTD' and the Company or individual displaying this floor plan.

Unauthorised reproduction prohibited.

Â© Still Moving London LTD (www.stillmoving.london)



Interested?

redhill@ralphjames.co.uk
01737 765 555

1

ralphjames.co.uk