



£585,000

Cheshire Street

London, E2 6ER

Located just seconds from Brick Lane is this 2 double bedroom apartment set within a private modern development.

The property is spread over 725 square feet and features a bright reception room with plenty of natural light and access to a private balcony.

There is a modern fitted kitchen, family bathroom and 2 double bedrooms with a en-suite to the master bedroom.

The property comes with the added bonus of having a secure parking space.

Cheshire Street is located moments from Brick Lane, one of the East End's most famed streets with a colourful history that records numerous different communities passing through over the centuries. The restaurants, cafes and shops both on the road and in the wider locality are popular destinations for locals and visitors alike, and considered heaven for bargain hunters, foodies and fashionistas. Columbia Road Flower Market, Spitalfields and Whitechapel are all close by as well as some fantastic green escapes further afield - Haggerston Park, London Fields, and Victoria Park - voted London's favourite outdoor space.

The area has excellent transport links and is a short walk from Liverpool Street mainline station, Aldgate Underground and Shoreditch High Street Overground stations, as well as being served by a large number of bus routes.

Offered on a chain free basis.

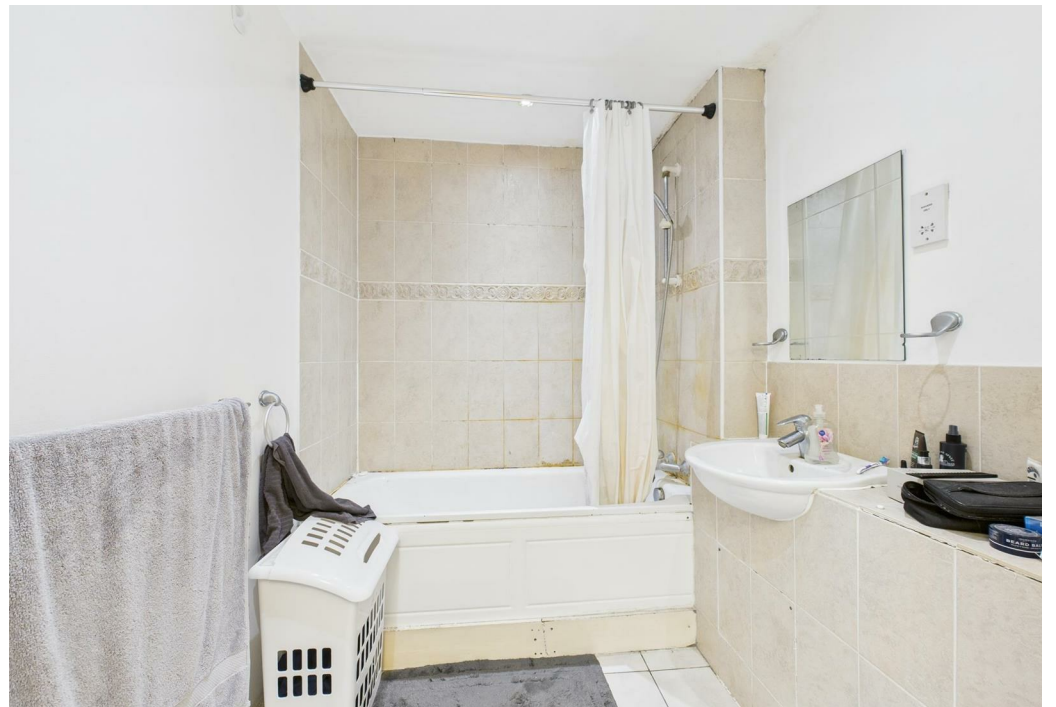
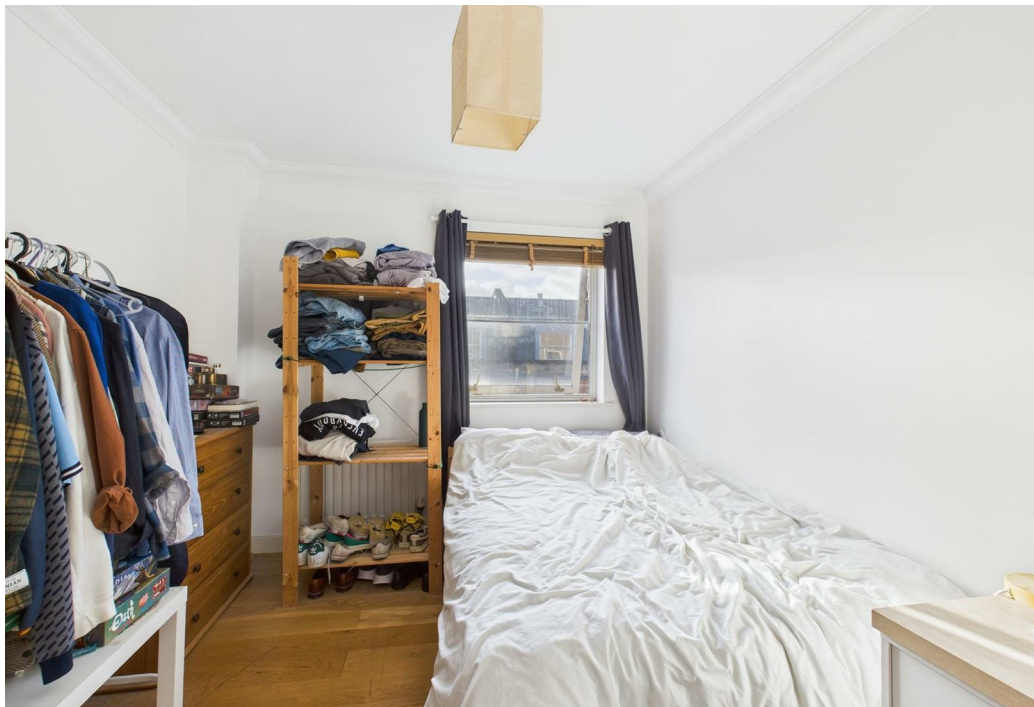
Leasehold: 101 years

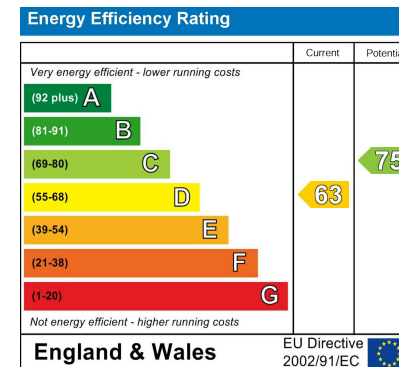
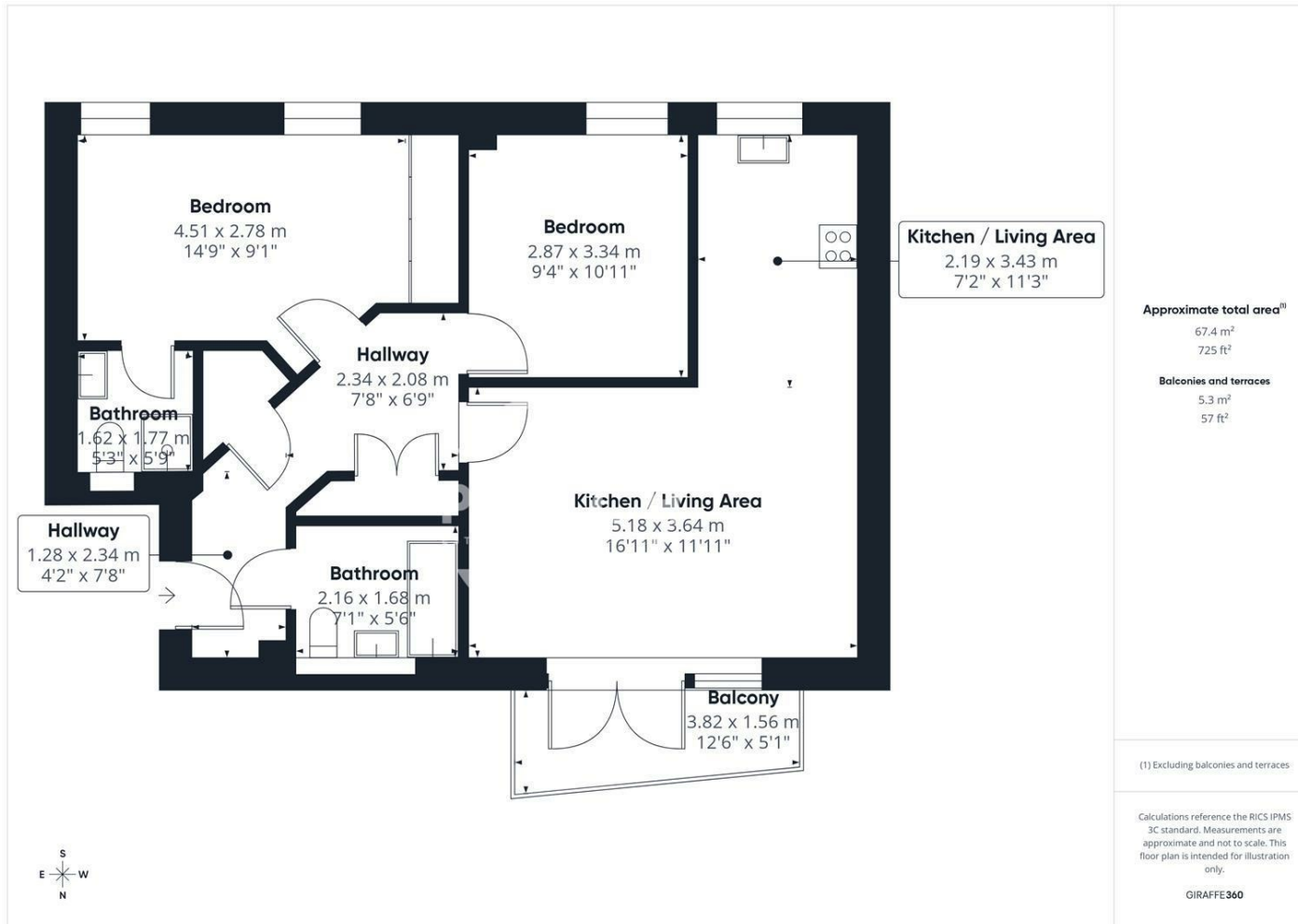
Service Charge: £3,703.50 per annum

Ground Rent: £250 per annum

Council Tax: Band D







Agents Note: Whilst every care has been taken to prepare these particulars, they are for guidance purposes only. All measurements are approximate and are for general guidance purposes only and whilst every care has been taken to ensure their accuracy, they should not be relied upon and potential buyers/tenants are advised to recheck the measurements

OFFICE ADDRESS
88 Cheshire Street
London
E2 6EH

OFFICE DETAILS
0207 739 6969
info@peachproperties.com
www.peachproperties.com