



## Cadmium Square, E2

### £700,000

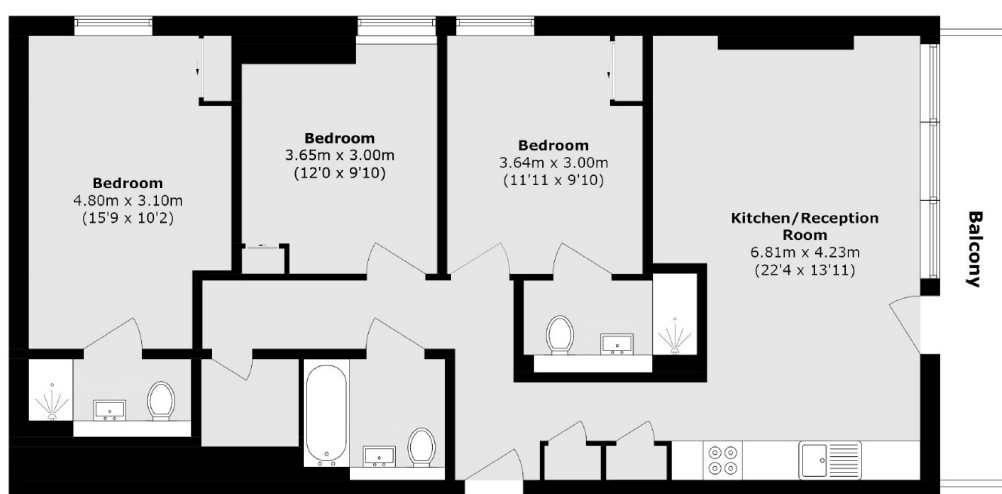
A three bedroom, three bathroom apartment set on the 9th floor of Grand Regent Tower. The property has a large, open plan living area with ample space to dine and a fully integrated kitchen which leads onto the large private balcony with panoramic views reaching to Victoria Park, both ways down regents canal, over Mile End Park, the Stratford skyline and Canary Wharf. The apartment offers three double bedrooms, all with built in storage, two of which are en-suite. The property comes with underground parking space and a concierge.

Grand Regent Tower is ideally located on the sought after Palmers Road, just a short distance from Mile End (District, Hammersmith&City) and Bethnal Green (Central). Victoria Park is close by along with the local coffee shops and restaurants.

### Features

- Three Bedrooms
- Three Bathrooms
- Private Balcony
- Panoramic Views
- Underground Parking
- Concierge

# Cadmium Square, London, E2



Total area (approx.): 93.0 sq. m (1001.0 sq. ft)

Balcony area (approx.): 6.8 sq. m (73.1 sq. ft)