



16 Hartwith Close, Harrogate

£265,000 Guide Price



**YOUR AWARD
WINNING AGENT**

#DARINGTOBEDIFFERENT



A well-presented three-bedroom semi-detached home occupying a delightful plot, tucked away within a quiet and convenient cul-de-sac, close to a wide range of local amenities. This excellent property offers spacious and well-appointed accommodation throughout and is ideal for a variety of purchasers seeking a home in a peaceful yet well-connected location.

Early viewing is strongly recommended to appreciate both the accommodation and the exceptional outdoor space on offer.

Council Tax band: C

Tenure: Freehold

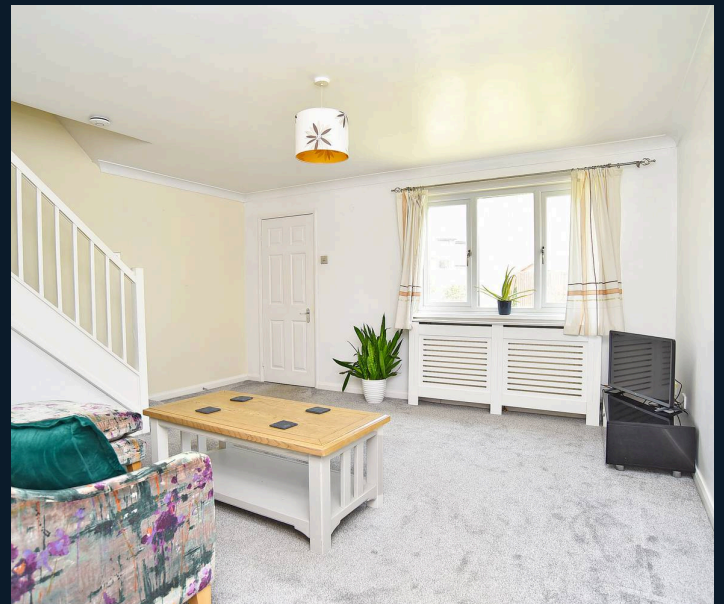
EPC Energy Efficiency Rating: C

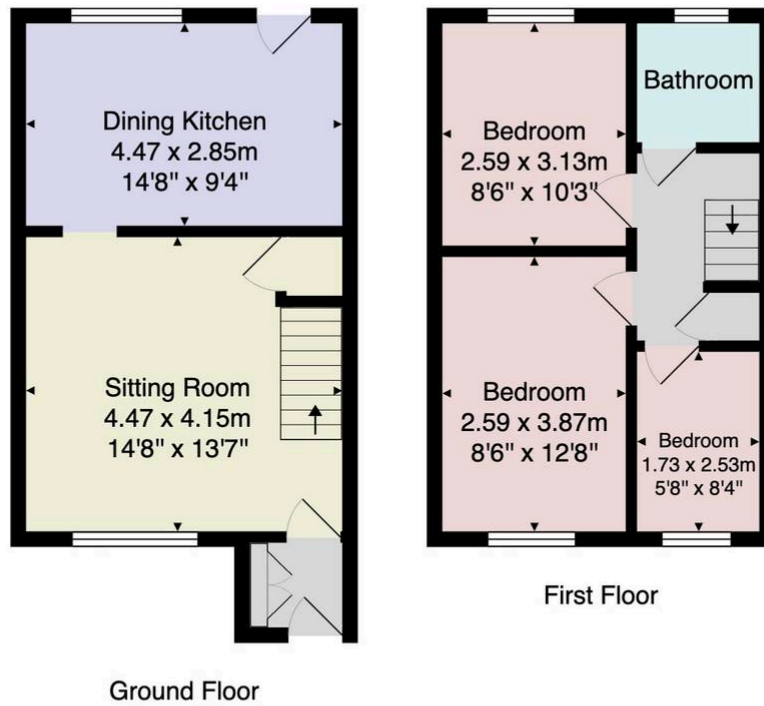
EPC Environmental Impact Rating: C



The accommodation briefly comprises an entrance porch, a spacious sitting room with an open staircase leading to the first floor, and a modern dining kitchen fitted with an attractive range of units and integrated cooking appliances. To the first floor are three well-proportioned bedrooms, including two generous doubles, together with a modern house bathroom. A particular feature of the property is its generous plot. Occupying a pleasant position within the cul-de-sac, the home enjoys extensive lawned gardens extending to the side and rear, providing a surprising amount of outdoor space and an excellent degree of privacy. A raised terrace creates an ideal setting for outdoor dining and entertaining, whilst a paved driveway provides convenient off-street parking.

The property is situated in a popular residential location, within easy reach of local shops, schools, supermarkets and transport links, making it an excellent opportunity for a wide range of buyers.





Total Area: 65.8 m² ... 709 ft²

All measurements are approximate and for display purposes only.

No liability is accepted by either the agency or Box Property Solutions Ltd as to the exact measurements of the rooms.

Box Property Solutions Ltd retains the copyright on this plan and allows agents to use it with agreed permission.

