

Lisson Grove, NW8

£750 Per week

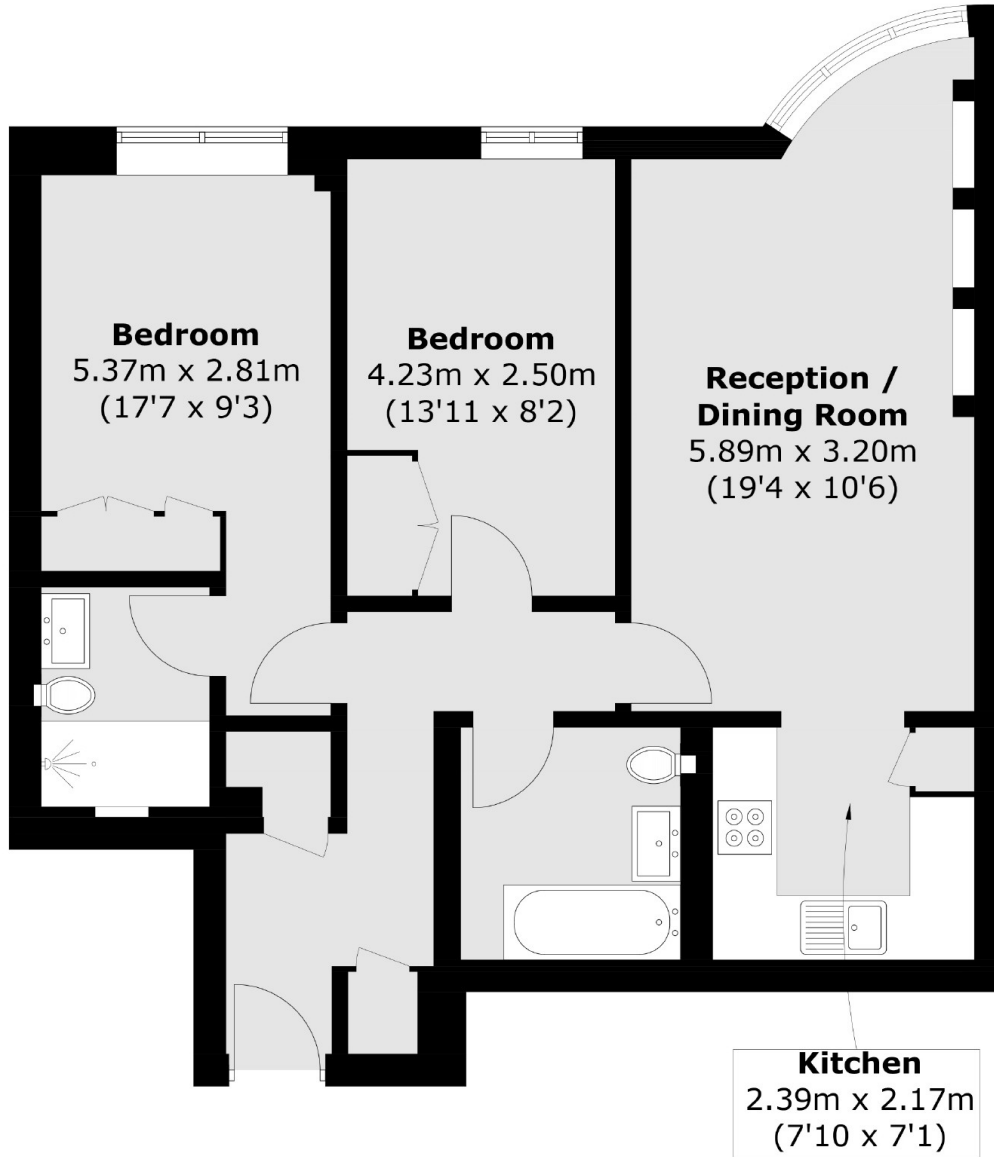
A bright two bedroom, two bathroom apartment in a portered block close to Marylebone & St Johns Wood. Spacious reception room, semi open plan kitchen, two double bedroom and two bathrooms. The property benefits from underfloor heating and smart technology. The building has gym access for residents.

Belvedere Heights is located close to Marylebone station and a short distance to Church Street Market.

Features

- Modern Apartment
- Spacious Reception Room
- Two Double Bedrooms
- Two Bathrooms
- Underfloor Heating
- Smart Technology
- Porter Service
- Gym

Lisson Grove,
London, NW8



Total area (approx.): 65.5 sq. m (705.0 sq. ft)