

oakheart



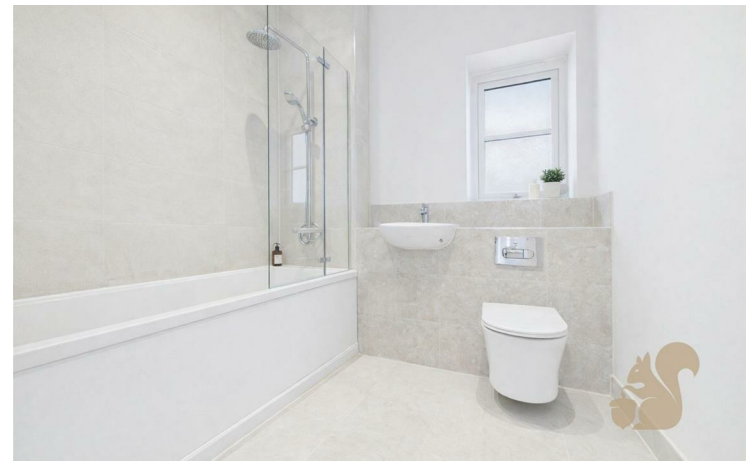
£435,000

Salt Meadows, Tollesbury

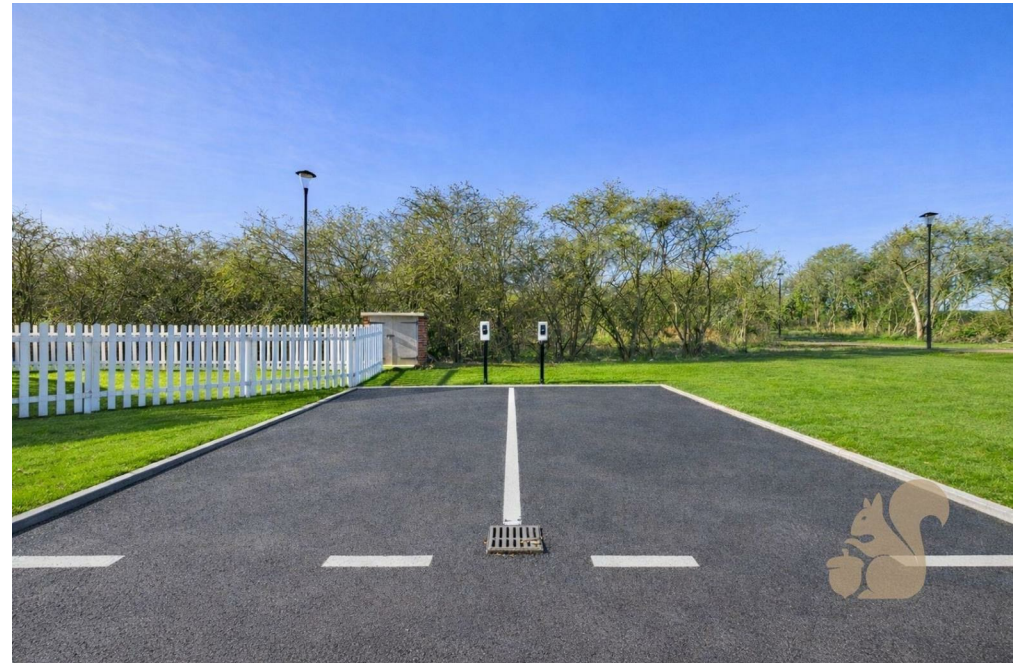
Plot 22, The Imogen, at Salt Meadows is an attractive two bedroom semi-detached bungalow of approximately 787 sqft, offering easy, single-level living in a peaceful coastal setting. The home centres around a bright open-plan kitchen, living and dining space that opens onto a private rear garden, creating a relaxed, sociable hub that works perfectly for everyday life and entertaining. Two well-proportioned bedrooms provide flexible accommodation

for owners, guests or a study, while the layout is designed to feel low-maintenance, comfortable and straightforward to move around. With on-plot parking, EV charging and access to the landscaped gardens and woodland walks of Salt Meadows, Plot 22, The Imogen, is an appealing choice for buyers looking for a modern, future-friendly home within a welcoming later-living community in Tollesbury.

Residents at Salt Meadows enjoy exclusive use of the on-site club house for social events and hobbies, together with easy access to village amenities, buses and walks along the Blackwater Estuary. With its blend of coastal village lifestyle, quality finishes and purpose-built later-living environment.








Local Authority:
Maldon District Council

Tenure:
Freehold

Council Tax Band:
New Build

Energy Efficiency Rating

	Current	Potential
<i>Very energy efficient - lower running costs</i>		
(92 plus) A		
(81-91) B		
(69-80) C		
(55-68) D		
(39-54) E		
(21-38) F		
(1-20) G		
<i>Not energy efficient - higher running costs</i>		
England & Wales	EU Directive 2002/91/EC	

Agents Note: Whilst every care has been taken to prepare these particulars, they are for guidance purposes only. All measurements are approximate and are for general guidance purposes only and whilst every care has been taken to ensure their accuracy, they should not be relied upon.

Oakheart Mersea
01206 382191
mersea@oakheart.co.uk
34a Barfield Rd, West Mersea, Colchester, Essex, CO5 8QT

oakheart