



# Olive

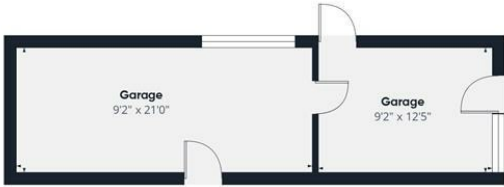
ESTATE AGENTS



## 6 Tor View, Cheddar, Somerset BS27 3NQ £469,950

\*\*\* LOCATION, LOCATION, LOCATION \*\*\* VIEWS VIEWS VIEWS \*\*\* APPROX 1,550 SQ FT (NOT INCLUDING THE INTEGRAL GARAGE) \*\*\* DETACHED 3 BEDROOM BUNGALOW \*\*\* VERY WELL PRESENTED THROUGHOUT \*\*\* DOWNSTAIRS SHOWER ROOM AND SEPARATE WC \*\*\* SITTING ROOM WITH FAR REACHING VIEWS ACROSS CHEDDAR \*\*\* SECOND SITTING ROOM/LARGE DINING ROOM \*\*\* KITCHEN \*\*\* BREAKFAST ROOM \*\*\* GARDEN ROOM \*\*\* DRESSING ROOM/OFFICE AREA \*\*\* LARGE MAIN BEDROOM WITH ENSUITE \*\*\* INTEGRAL STORE ROOM \*\*\* INTEGRAL GARAGE/WORKSHOP \*\*\* PARKING FOR 5 CARS \*\*\* WELL ESTABLISHED GARDEN \*\*\* OWNED SOLAR PANELS GENERATING INCOME \*\*\* EPC B/B \*\*\* COUNCIL TAX BAND D \*\*\* FREEHOLD \*\*\*

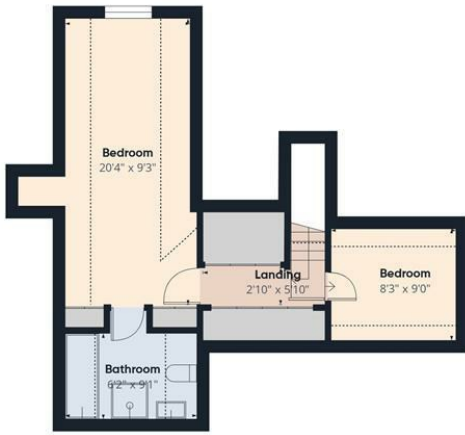




Floor 0



Floor 1



Floor 2

Approximate total area<sup>(1)</sup>  
1653 ft<sup>2</sup>  
Reduced headroom  
134 ft<sup>2</sup>

(1) Excluding balconies and terraces

Reduced headroom  
----- Below 5 ft

Calculations reference the RICS IPMS 3C standard. Measurements are approximate and not to scale. This floor plan is intended for illustration only.

GIRAFFE360

